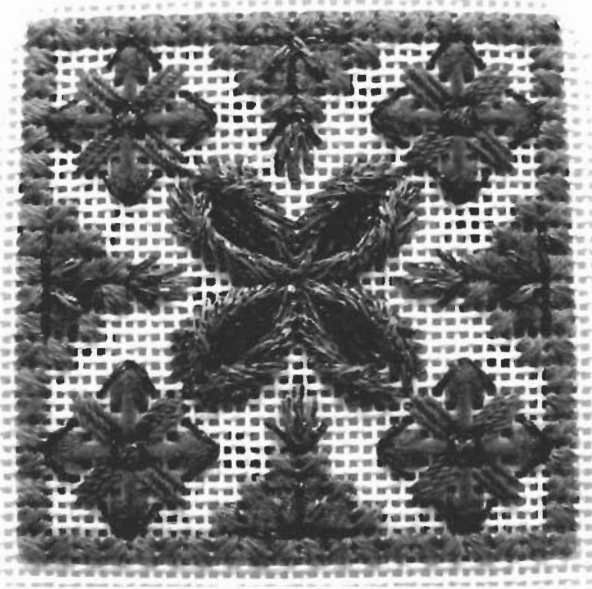


# Holiday Treasure # 1

A Carol Algie Christmas Ornament for

*Rainbow Gallery*



2 1/4" x 2 1/4"

## Materials:

6" x 6" white 18 count mono canvas

6" x 6" stretcher bars

Gold Rush 18™ GD45C-Deep Red

Gold Rush 18™ GD33C-Emerald

Elegance™ E829-Christmas Green

Petite Very Velvet™ V622-Green

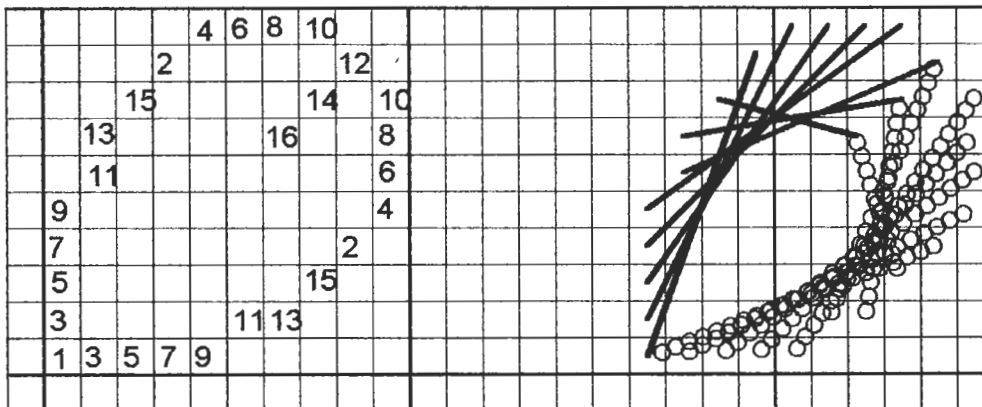
Splendor® S1016-Med. C'mas Green

Flair® F533-Med. Christmas Green

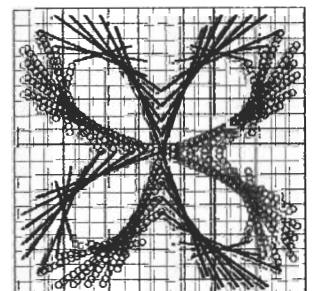


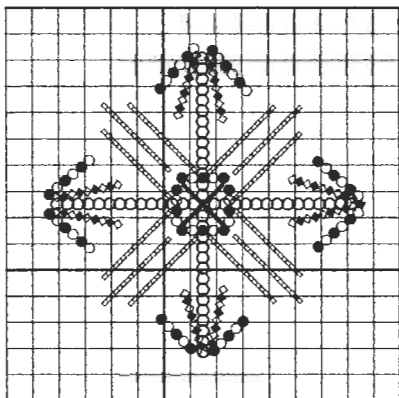
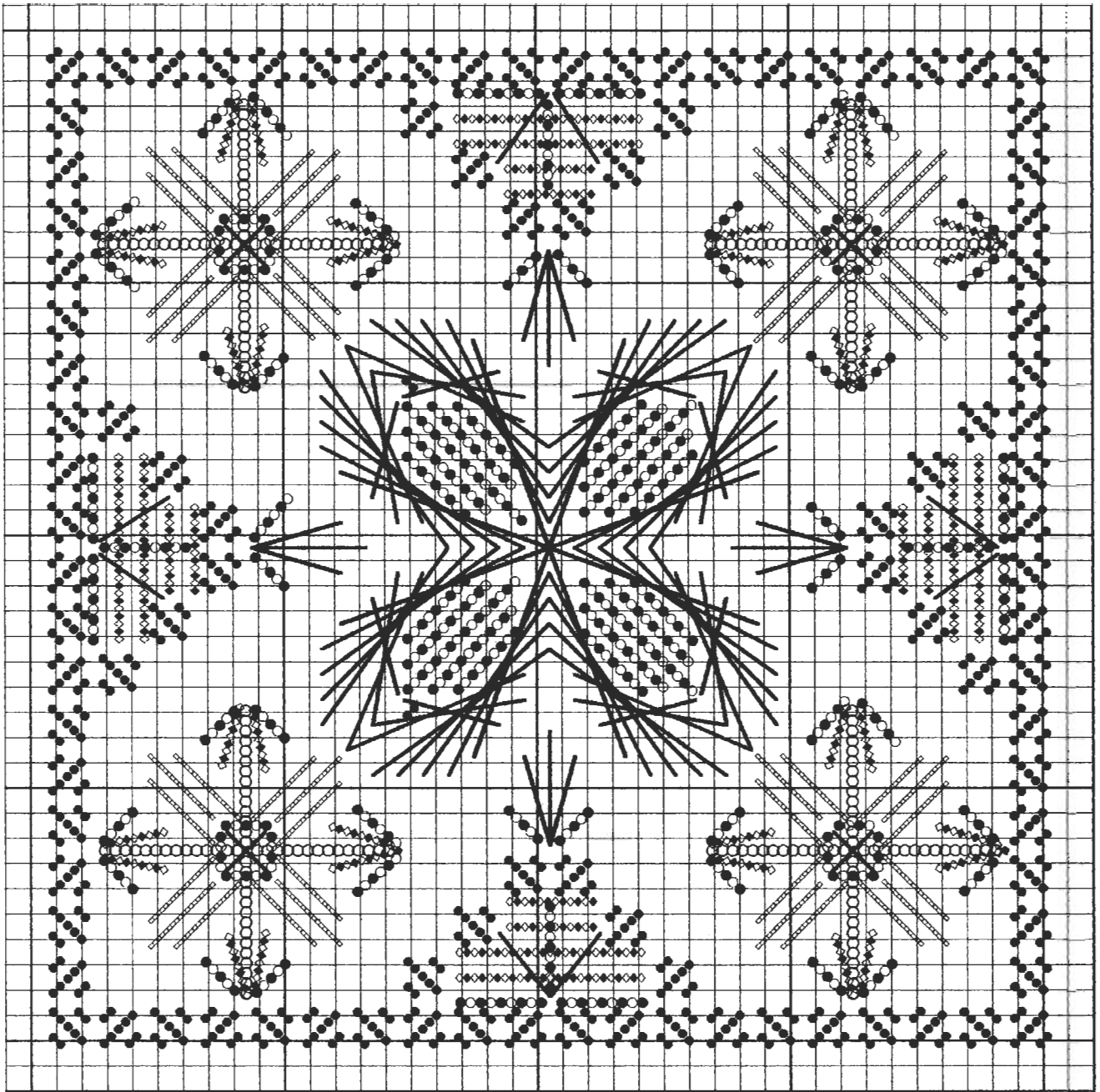
1. Do Straight stitches in the center of your canvas as diagrammed on Master Chart with Gold Rush 18 GD45C.
2. Stitch modified Jessica Flowers over the Straight stitches using Gold Rush 18 GD33C.
3. Stitch the framework of Alternating Mosaic stitches with 3 ply of Splendor S1016.
4. Fill the triangle areas of Mosaic stitches with Straight stitches using Flair F533.
5. Stitch the Clemantis Square stitches as diagrammed with Elegance E829, Petite Very Velvet V622, Flair F533, Gold Rush 18 GD33C and Gold Rush 18 GD45C.
6. Add Straight stitches with Gold Rush 18 GD33C and GD45C over the Flair in the triangle areas of the Mosaic stitches as diagrammed on the Master Chart. Add Straight stitches at the tip of the triangle areas of Mosaic stitches as diagrammed with the same threads.

**Finishing.** Glue onto matte board or foam core. Back with felt. Trim edge with a twisted cord, gimp, or other trim. Add a loop to the top to hang.



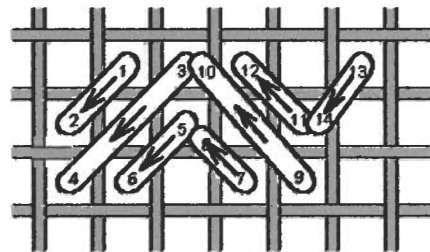
Modified Jessica Flower





Clematis Square

MASTER CHART



Alternating Mosaic