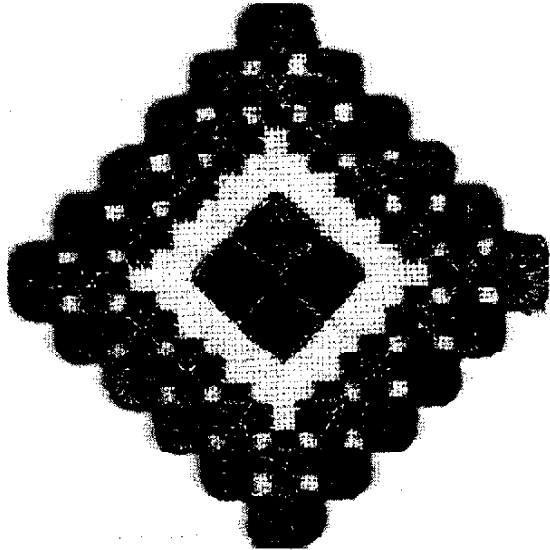


ANTIQUÉ ROSE ORNAMENT^{©1997}

A Ruth Dilts Design for Rainbow Gallery



MATERIALS:

- 6" x 6"—#22 Hardanger fabric (white)
- 1 card—Encore! E127-Antique Rose
- 1 card—Pebble Perle® P50-Periwinkle
- 1 card—Nordic Gold® ND3-Silver

Choose your favorite colors in these threads for alternate color ways.

For additional information regarding Hardanger stitching techniques, see "Beginners Charted Hardanger Embroidery" by Meier/Watnemo, ©1980.

1. Find center of fabric and work center medallion Blocks using a full repeat of 1 ply Encore!.
2. Count down 11 threads from bottom of center medallion and do Kloster Blocks using a full repeat of 1 ply Encore!.
3. Do Buttonhole Stitch using a full repeat of 1 ply Encore. Note direction change of Buttonhole edge on the inside. See Diagram #1.
3. Cut areas as shown on Master Chart and remove threads. Stitch carefully from now on as there is very little fabric to hold onto your stitches.
4. Fill in cut areas next to the Buttonhole Stitches with Dove's Eyes using a single ply of Pebble Perle. Anchor behind Kloster Blocks. See Diagram #2.
5. With Nordic Gold do the Twisted Cross Stitch. See Diagram #3. After 1-2, wrap around thread twice back to #1; slide under Kloster block to #3. Continue in same manner. Note that it starts and finishes in the fabric area.
6. Outline center medallion with Nordic Gold as shown in Master Chart.
6. Cut out around Buttonhole Stitch. Attach a hanger of Nordic Gold.

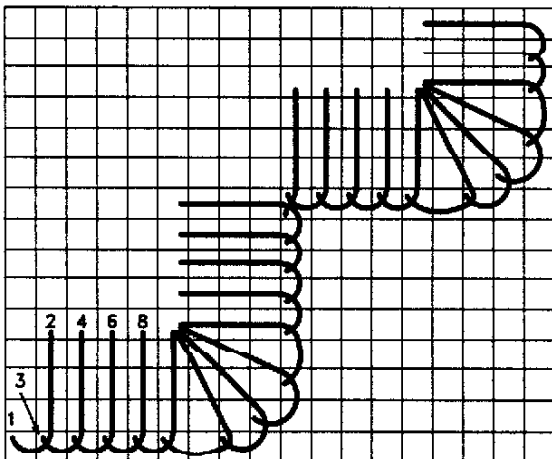


DIAGRAM #1—Buttonhole Stitch

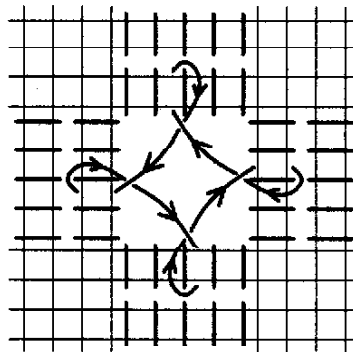


DIAGRAM #2—Dove's Eye

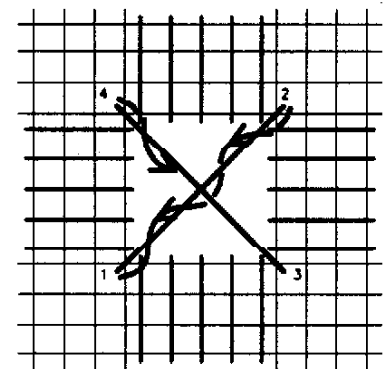


DIAGRAM #3
Twisted Cross Stitch

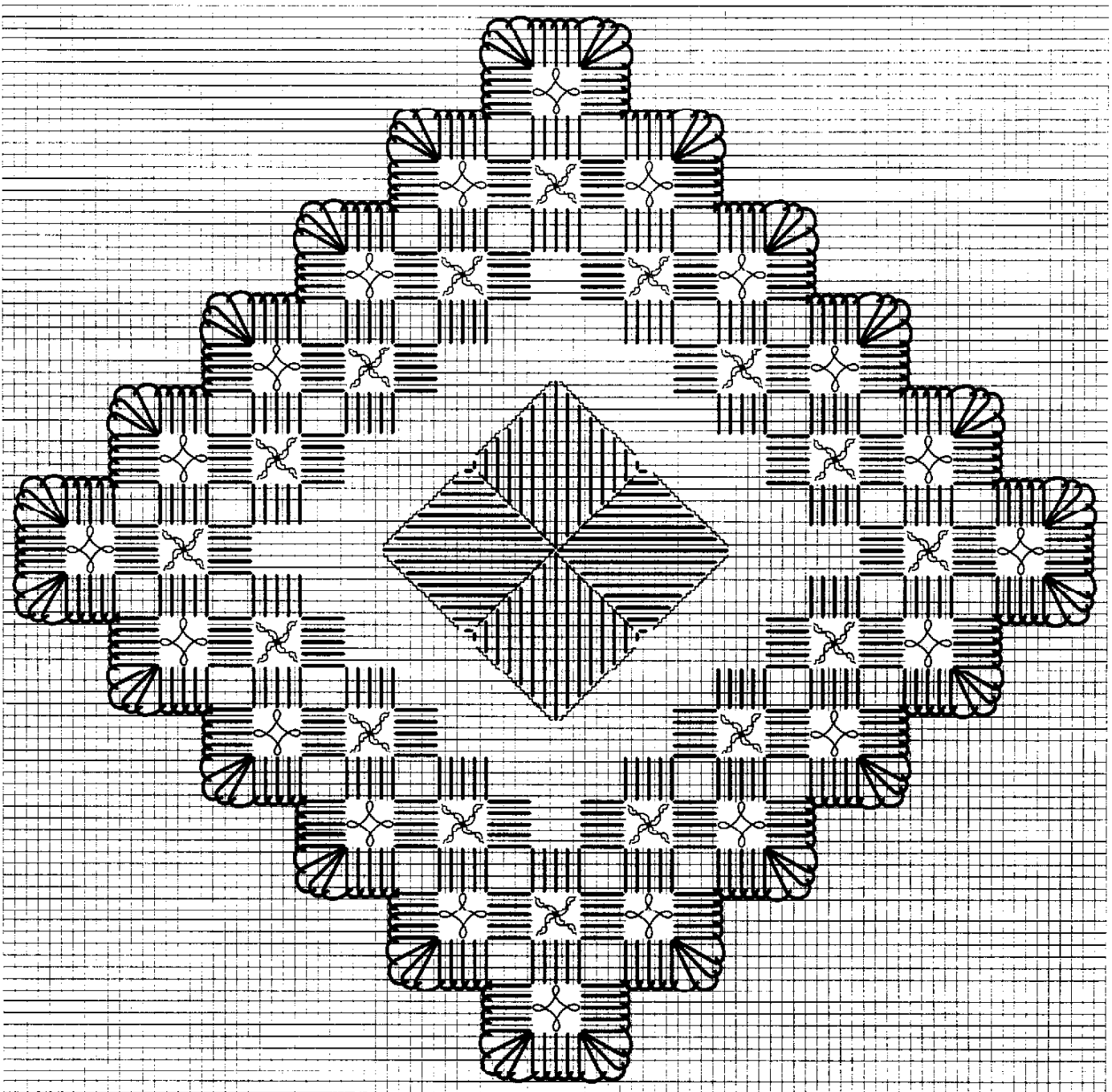
Photocopying of this design is invited.

Rainbow Gallery

7412 Fulton Ave., #5, North Hollywood, CA 91605

Production by Lightworks

ANTIQUÉ ROSE HARDANGER ORNAMENT ©1997



- | | |
|--|--------------|
| | Encore! |
| | Nordic Gold |
| | Pebbly Perle |