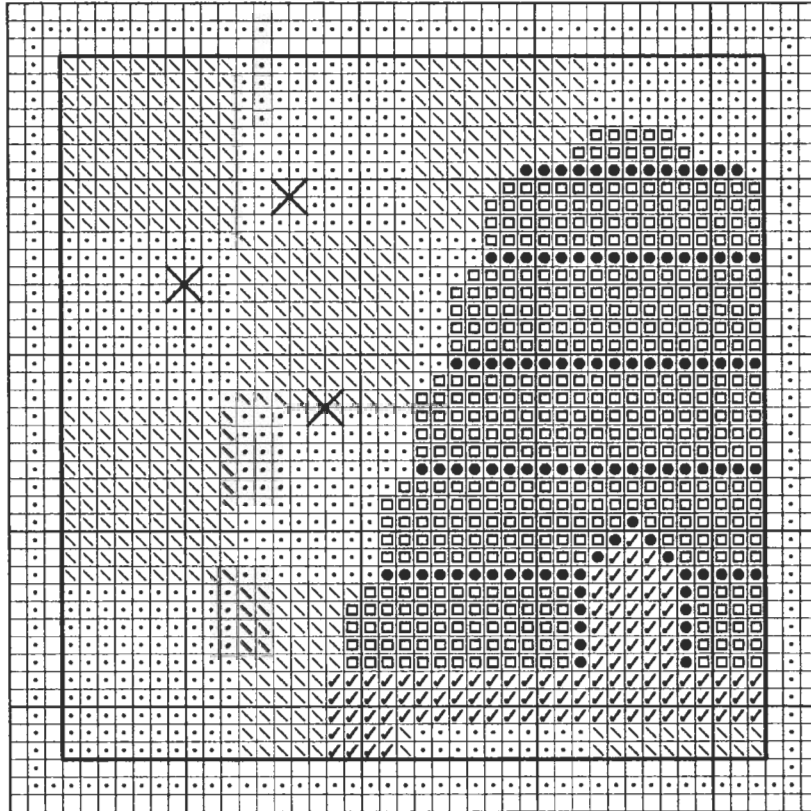


2005 Cross Stitcher's Surprise Series from *Rainbow Gallery*

*AUGUST - BEESKEP*

Stitch count: 44h x 44w – approx. 3”h x 3”w ♥ 28ct Antique Gold Country French linen from Wichelt (#86-270)  
 stitched over two or 14ct Antique Gold Country French Soft Touch Aida (#367-270)



**Rainbow Gallery Fibers - 1 card each**

- E901 Elegance™ Pale Golden Brown – 1 strand
- FT21 Fyre Werks® Soft Sheen Lt Copper – 1 strand
- ✓ RT35 Rainbow Tweed Dark Brown – 1 ply
- ∖ S849 Splendor® Dark Olive – 2 ply
- S1036 Splendor® Plum – 2 ply

After completing all cross stitches, back stitch with 1 strand Lite Copper Fyre Werks® around the edge of the main design area as indicated by the solid line on the chart. We attached three brass bee charms in the background area of the design using the Dark Olive and Plum Splendor® colors – see the large 'X's on the chart for placement. (3 charms #80007BR from By Jupiter!)

Go to [www.ericamichaels.com](http://www.ericamichaels.com) for

**ERICA MICHAELS**  
DESIGNS FOR COUNTED CROSS STITCH

more designs by Linda Stolz

See many more of our designs and  
 learn more about our products at  
[www.rainbowgallery.com](http://www.rainbowgallery.com)

*Model framed by Homespun Corner, Clarksville TN with Wood 'N Needle Crafts #FF G LL (Forest Green)*

**Come back for next month's design!**