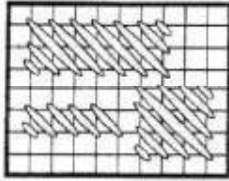
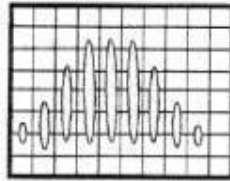


Autumn Square, continued

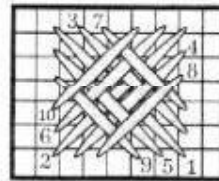
Copyright © 2001 Rainbow Gallery
 Permission granted to make duplicate copies.



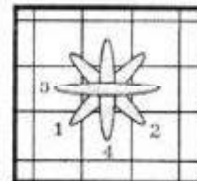
Diagonal Satin Stitch



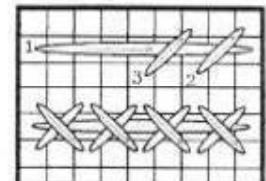
Straight Stitch



Waffle Stitch

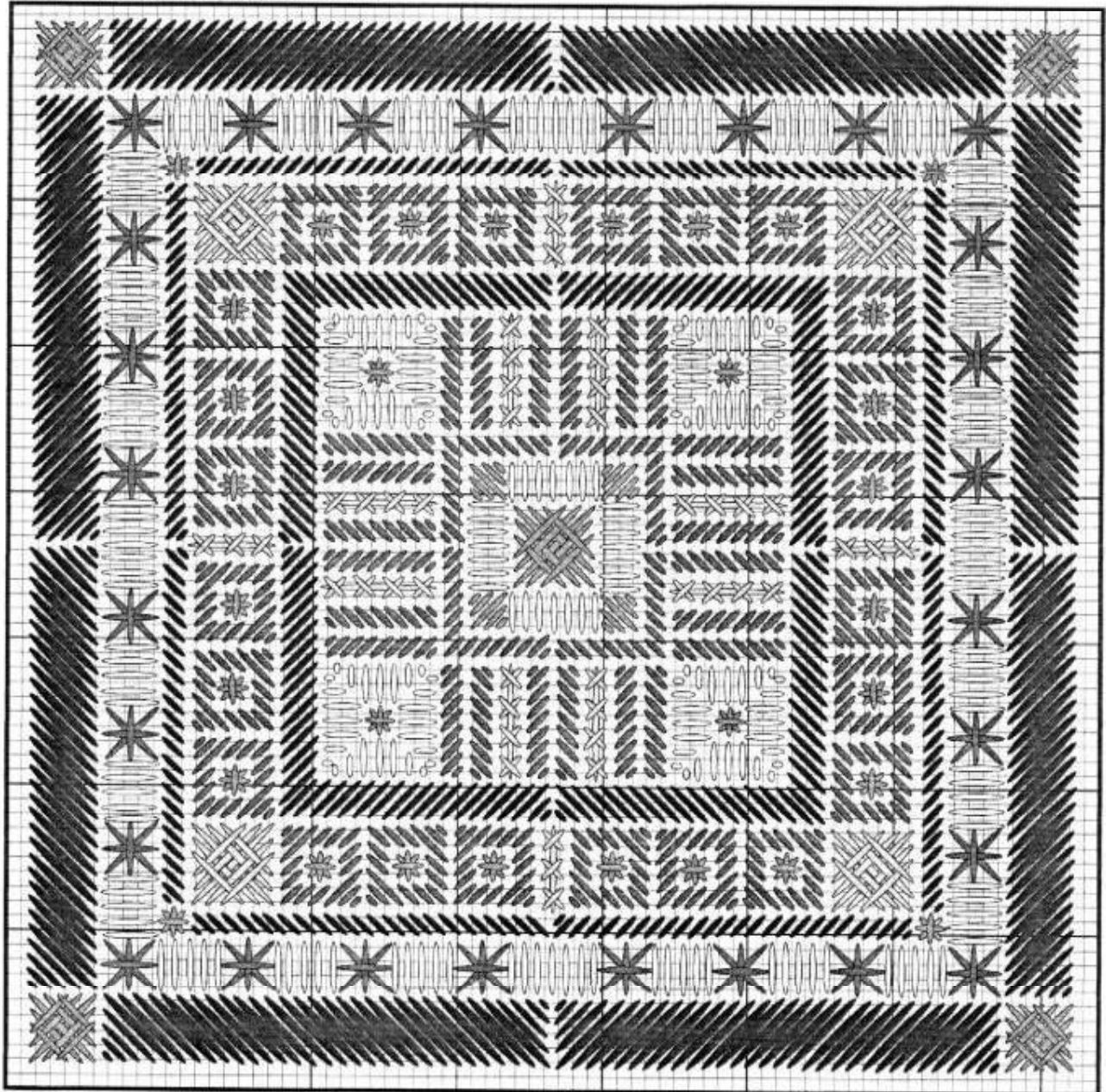


Smyrna Stitch








Cross Stitch Row

Main Graph, showing all stitches



*Be creative...
 use various types
 of threads...
 and have fun!*

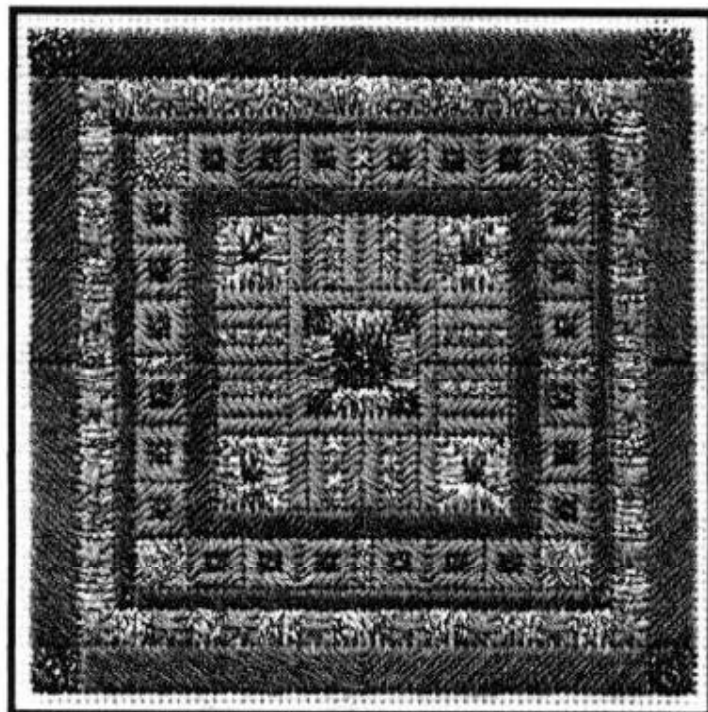
Rainbow Gallery's:

 Treasure Chest, TC05 - Tropic Gold	 Matte 18, M304- Lilac
 Nordic Gold, ND14 - Copper	 Matte 18, M246 -Dk Blue Violet
 Gold Rush 18, GD26C - Royal Blue	<i>NOTE: Use one strand of all threads.</i>

Autumn Square

For Rainbow Gallery by:

LAURA J. PERIN DESIGNS



Symbol	Materials
	Rainbow Gallery's:
	Treasure Chest, TC05 - Tropic Gold
	Nordic Gold, ND14 - Copper
	Gold Rush 18, GD26C - Royal Blue
	Matte 18, M304 - Lilac
	Matte 18, M246 - Dark Blue Violet
Design Count: 72w x 72h stitches	
Design Size: 4" x 4" on 18 ct. mono canvas (eggshell or pale complementary color)	
Cut Canvas Size: 6" x 6"	

General Instructions:

- To keep work taut, scroll bars are highly recommended.
- Please experiment with different color combinations, as well as different thread types. For instance, you can use #5 pearl cotton threads instead of the Matte 18 threads mentioned above.
- Start all threads with a waste knot on top of fabric; end all threads by weaving them into back of existing work. Avoid carrying thread across back of open fabric.
- NOTE: All stitching in this design is done with ONE STRAND of each type of thread.

STITCHING INSTRUCTIONS:

- Step 1. Center Block:** Mark center of canvas. With 1 strand of Gold Rush 18, work Waffle Stitch at center, going over 6 threads; work corner blue squares. With 1 strand Treasure Chest, work Straight Stitches around blue center. With 1 strand lilac Matte 18, Diagonal Satin Stitch around center square, then work chevron rows radiating out to sides. In-between chevron rows, use 1 strand Nordic Gold to create Cross Stitch Rows. Put small blue Smyrna Stitches in corner centers, then use Treasure Chest to Straight Stitch sparkling corner squares.
- Step 2. Middle Band:** Work border with dark blue violet Matte 18, going over 3 threads of canvas. With 1 strand Nordic Gold, make Waffle Stitches in corners. Fill rows with alternating squares of lilac Matte 18. Put a Cross Stitch Row at center of each band. Work a row of Diagonal Satin Stitches along outer edge of middle band, using dark blue violet Matte 18. Put a small Smyrna Stitch in each corner using Gold Rush 18.
- Step 3. Outer Border:** With 1 strand lilac Matte 18, work a row of large Smyrna Stitches, going over 4x4 threads, and skipping every 4 threads. In-between Smyrnas, use Treasure Chest to Straight Stitch along the row. Finally, work the wide outer border with 1 strand dark blue violet Matte 18, going over 5 threads of canvas. At corners, work a Waffle Stitch out of royal blue Gold Rush 18.