

# BIRD SONG<sup>©2002</sup>

## A Cheryl Schaeffer Design for Rainbow Gallery

### MATERIALS

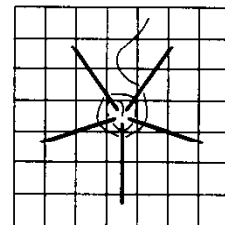
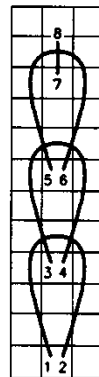
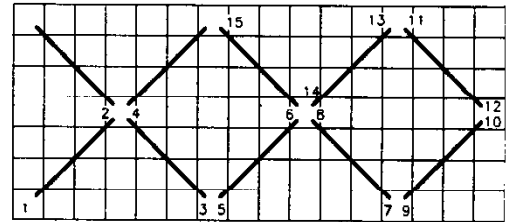
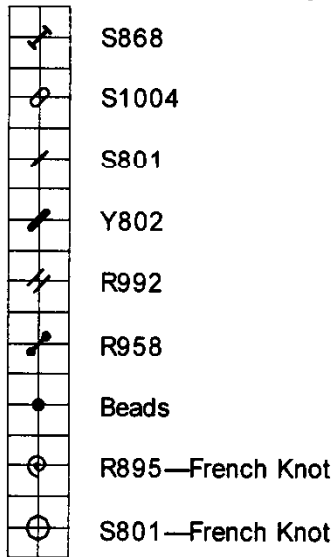
6" x 6"—#18 Mono Canvas (light blue gray)  
#24 Tapestry Needle  
Stretcher bars to fit

1 card—Splendor® S868-Med. Baby Blue  
1 card—Splendor® S1004 Bubblegum  
1 card—Splendor® S801-Black  
1 card—Subtlety® Y802-White  
1 card—Splendor® Silk Ribbon R895-Dark Flesh  
1 card—Splendor® Silk Ribbon R992-Pale Sea Green  
1 card—Splendor® Silk Ribbon R958-Pistachio  
1 pkg—Mill Hill Glass Seed Beads #00161



1. Stitch Eyelets with Subtlety (Y802) following Master Chart. Come up at outside and go down in center hole. Add Smyrna Crosses between the Eyelets. See Diagram #1.
2. Trellis is Four-way Continental (over 3 threads) in Subtlety (Y802). See Diagram #2.
3. Bird is Tent Stitch in 4 ply Splendor (S868 and S1004). Eye is French Knot in 1 ply Splendor (S801). Backstitch bird with 1 ply Splendor (S801).
4. Hearts are vertical long stitches in 4 ply Splendor (1004), stitched twice. Chain Stitch hearts to the trellis with Subtlety (Y802). See Diagram #3.
5. Spokes of Spider Stitch Roses are Subtlety (Y802). Wrap spokes in Splendor Silk Ribbon (R895). See Diagram #4. Leaves are long stitches in R992 and R958. Do not pull taut but allow to slightly curve. Rosebuds are French Knots in R895.
6. Attach beads at edges of eyelets and at intersections of Four-way Continental. Randomly scatter beads around bluebird. See Master Chart.

Finish as a scissors case.



Photocopying of this design is invited.

*Rainbow Gallery*

7412 Fulton Ave., #5, North Hollywood, CA 91605

Production by Lightworks

