

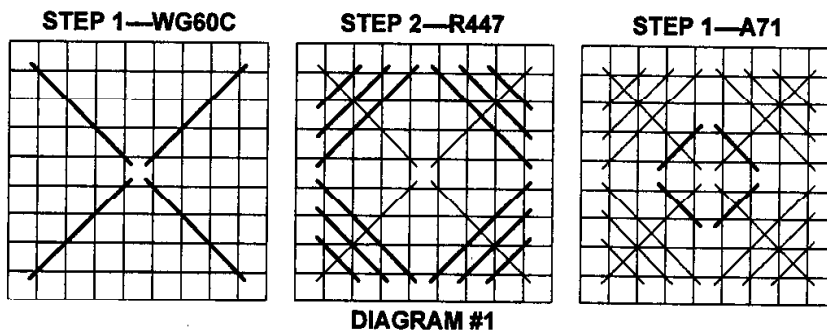
# Blue Diamond Glitter <sup>©2001</sup> A June Moes Design for Rainbow Gallery

Material List (Finished Size: 5" x 5")  
8" x 8"—#18 Mono Canvas (white)  
Stretcher bars to fit; #22 & #24 Tapestry Needles;

1 card—Bravo!® A71-Blues  
1 card—Gold Rush 14® WG60C-Baby Blue  
1 card—Rainbow Linen R447-Baby Blue  
1 card—Splendor® S860-Lite Sky Blue

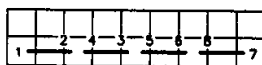
Note: Splendor is made with three bundles of four plies each. To separate into individual plies for stitching, pull out one bundle at a time and ply it.

- BORDER**—Measure in 1.5" to begin stitching diagonals (over 4 threads) using Gold Rush 14 (WG60C). Gold Rush is a chain fiber. Cut 10" and pull out chain. This single ply now fits #18 canvas. See Step 1, Diagram #1. Add Cushion Stitch over each diagonal leg using Rainbow Linen (R447). See Step 2, Diagram #1. Stitch diamonds with 1 ply Bravo! (A71). See Step 3, Diagram #1. Follow Master Chart for placement.



- INSIDE CORNERS**—Work Backstitch (Diagram #2) or Double Running Stitch (Diagram #3) with 1 ply Bravo! (A71). Alternate corners, light to dark, dark to light, starting in the corner. See photo and Master Chart. Add running stitches as shown in Master Chart using 1 ply Gold Rush (WG60C).

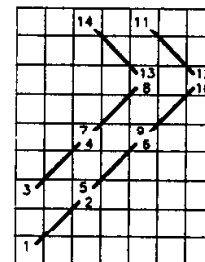
- INNER BORDER**—Start at bottom center and stitch 5 rows of Cable Stitch using 2 ply Splendor (S860). See Diagram #4 and Master Chart.



**DIAGRAM #2**  
Backstitch

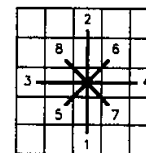


**DIAGRAM #3**  
Double Running Stitch



**DIAGRAM #4—Cable Stitch**

- CENTER DIAMOND**—Outline diamond with Backstitch or Double Running Stitch (over 2 threads) using 1 ply Bravo! (A71). See Diagrams #2 and #3. Use same Bravo! and same stitch to fill in center motif. Add Double Straight Cross Stitches in 1 ply Gold Rush (WG60C). See Diagram #5 for count and Master Chart for placement.



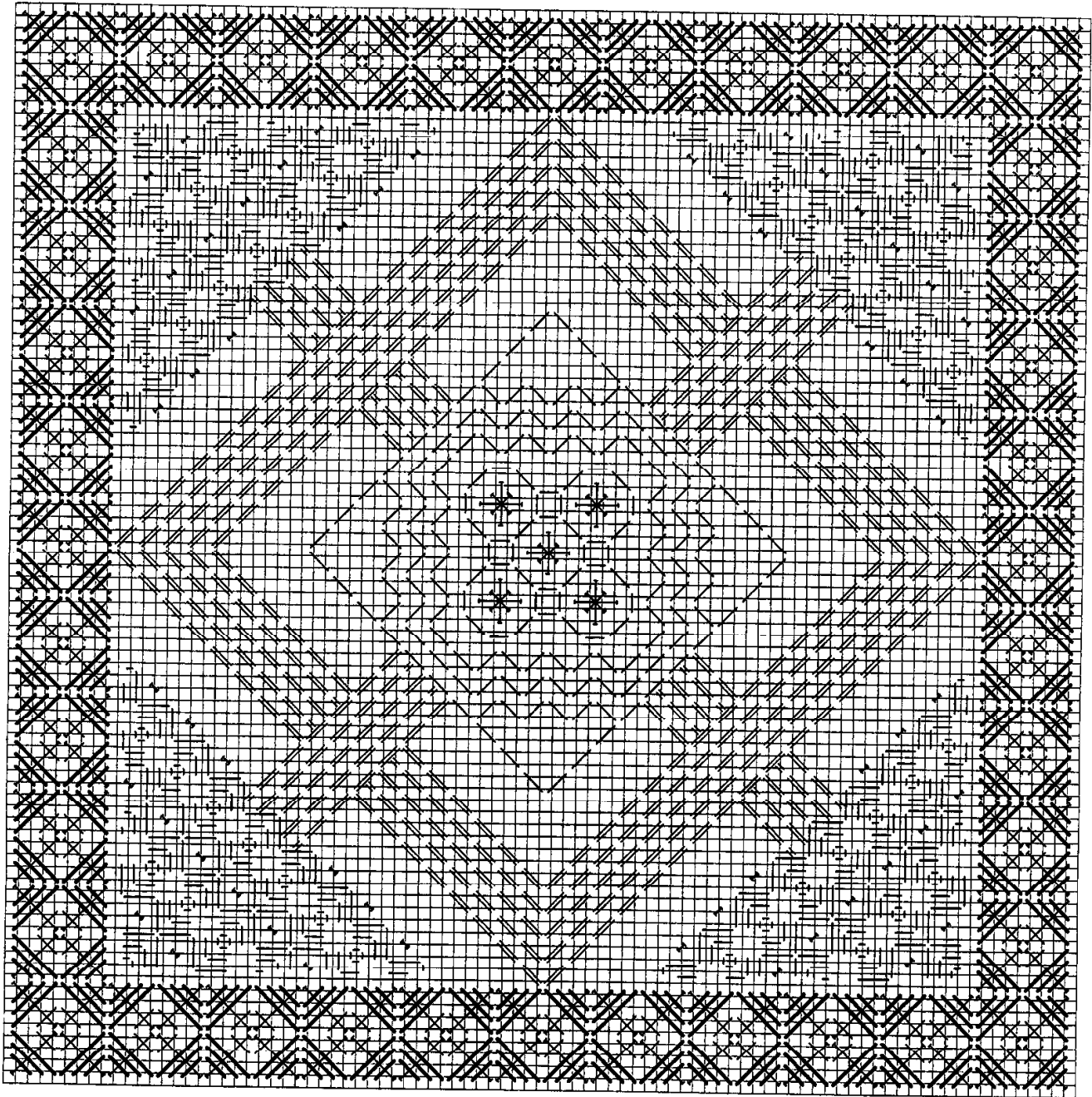
**DIAGRAM #5**  
Double Straight Cross

Photocopying of this design is invited.

*Rainbow Gallery*

7412 Fulton Ave., #5, North Hollywood, CA 91605

See many more of our designs  
and learn about our products at  
[www.rainbowgallery.com](http://www.rainbowgallery.com).



- |  |                      |
|--|----------------------|
|  | Splendor (S860)      |
|  | Rainbow Linen (R447) |
|  | Gold Rush 14 (WG60C) |
|  | Bravo! (A71)         |