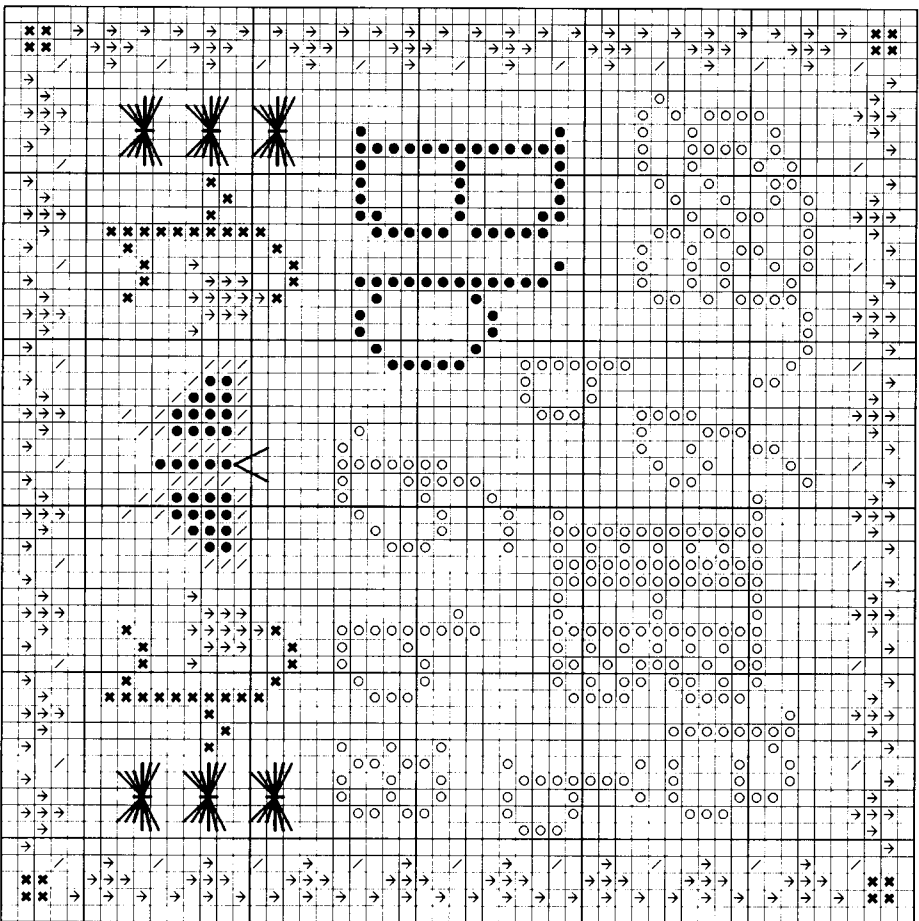


"B" is for Butterfly & the Butterfly Stitch

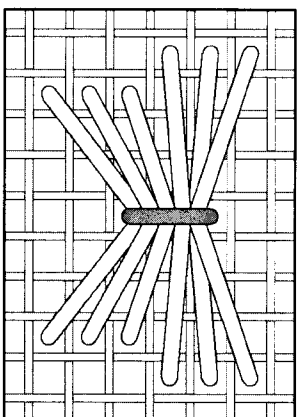
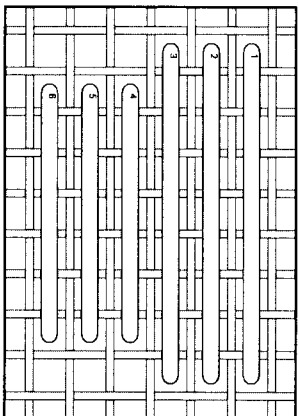
Stitch count: 53h x 53w – approx. 4" h x 4" w stitched over 2 threads on 28ct Clay Cashel linen from Zweigart (#3281-715)



Rainbow Gallery Fibers - 1 card each

- S816 Splendor® Pink – 2 ply
- ↓ S1041 Splendor® English Rose – 2 ply
- ✱ S1058 Splendor® Lite Spring Green – 2 ply
- ∨ Y878 Subtlety™ Maize – 1 strand
- PB206 Petite Treasure Braid™ Pink Pearl – 1 strand*

NOTE: As an option, PB206 may be blended with 1 ply of S816. After completing all cross stitches, work the Butterfly stitches as detailed below. Finally, make straight stitches with 1 ply of S1041 for the antennae of the central butterfly motif.



Butterfly Stitch

The first diagram shows the "loose" satin stitches worked with 1 strand of Maize Subtlety™. The second diagram shows a single straight stitch made over 2 threads with 2 ply of S1041 English Rose Splendor® to gather up the satin stitches into the butterfly shape.

NOTE: Grid lines in stitch diagram represent one thread of your evenweave or linen fabric. Numbers are shown where your needle comes up from beneath the fabric.

See many more of our designs and learn more about our products at www.rainbowgallery.com

ERICA MICHAELS
NEEDLEART DESIGNS

See more designs at www.ericamichaels.com

Model framed by Lynne's Custom Framing, Clarksville TN
East Side Mouldings #OCON, www.eastsidemouldings.com
Individual frame sizes: 5-3/4" square

Come back for next month's design, and collect the entire alphabet!