

# Candy Cross Canes

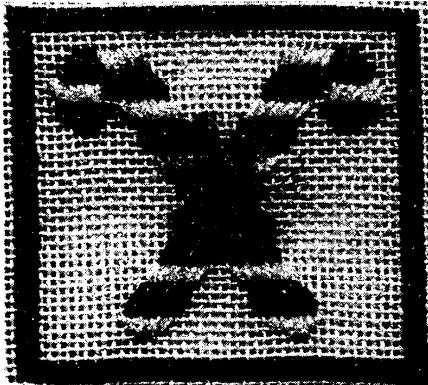
## A Catarina Creations Design for Rainbow Gallery

### MATERIALS

5" x 5"—#18 mono canvas (White); Stretcher bars to fit; #22 Tapestry needle

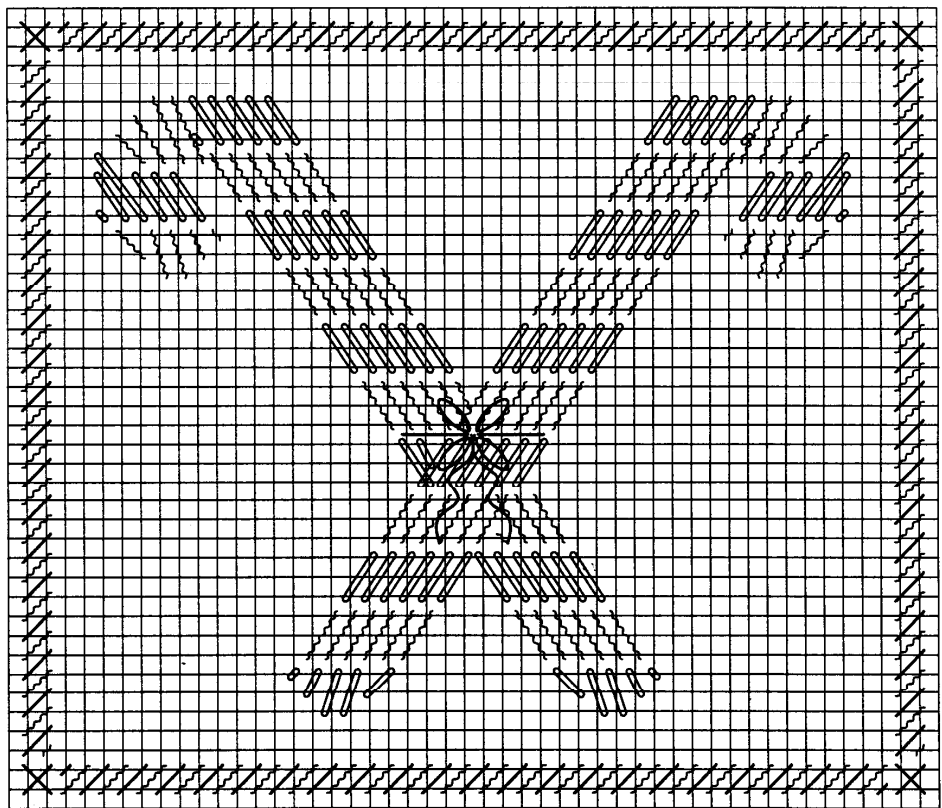
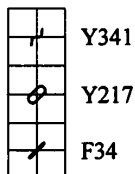
1 card each of the following:

Frosty Rays Y341-Christmas Red Sparkle, Y217-White Pearl; Fyre Werks F34-Green



1. Begin 2" over and 1" up from bottom left alternating Y217 and Y341
2. Border is Slanted Gobelin with Cross Stitch (over 2) corners. See Master Chart for color placement.
3. Bow is F34. Make 4 medium loops (these will separate to look like a gathered bow). Make another large loop, cut in half to form streamers.

NOTE: If you omit the border, the design will fit a large 2 1/2" Dritz button.  
Enjoy & Happy Holidays!!



See many more of our designs and  
learn about our products at  
[www.rainbowgallery.com](http://www.rainbowgallery.com).