

# CAROLINE'S MINI LIGHTS

Sally London designs especially for

*Rainbow Gallery*

## Supply List

8" x10" #18 Mono Metallic Eggshell/Gold Canvas

#22 or #24 Tapestry needles

Stretcher bars to fit

Textile Marker

1 card each of the following:

Treasure Ribbon Petite PR02 – Arctic Gold

### Ornament #1

Silk Lame' Braid SL03 – Ecu

Neon Rays® Plus NP100 – Brassy Gold

### Ornament #2

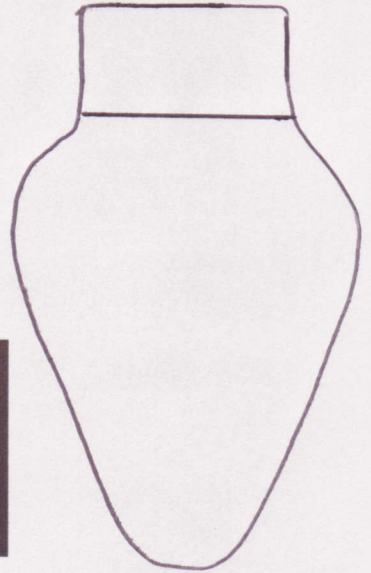
Silk Lame' Braid SL04 – Antique Rose

Silk Lame' Braid SL05 – Avocado

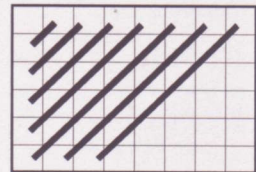
### Ornament #3

Silk Lame' Braid SL08 – Red

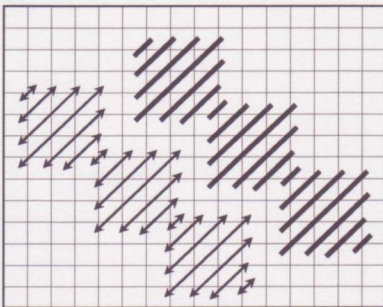
Silk Lame' Braid SL15 – Dark Blue



1. Before mounting your canvas, trace three mini sock shapes.
2. For ornament tops fill in above the line with Elongated Cashmere Stitch, two rows over 5 canvas threads each.
3. Fill in each ornament shape with the appropriate stitch and color. Compensate when necessary.
4. Have finished as flat or stuffed ornaments with twisted cords and hangers.



Ornament tops



Ornament #1  
SL03 and NP100

### Alternate Colors

#18 Victorian Red Canvas

Treasure Ribbon Petite PR03 - Gold

### Ornament #1

Silk Lame' Braid SL08 – Red

Neon Rays® Plus NP105 – Christmas Green

### Ornament #2

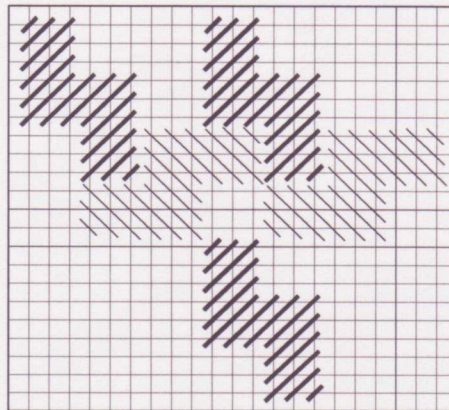
Silk Lame' Braid SL12 – Purple

Silk Lame' Braid SL09 – Dark Red

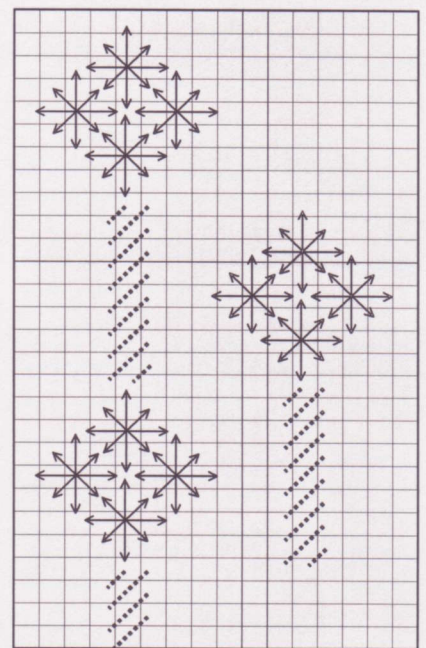
### Ornament #3

Silk Lame' Braid SL14 – Blue

Neon Rays® Plus NP105 – Christmas Green



Ornament #2  
SL04 and SL05



Ornament #3  
SL08 and SL15

Color Selections by *Miss Caroline*