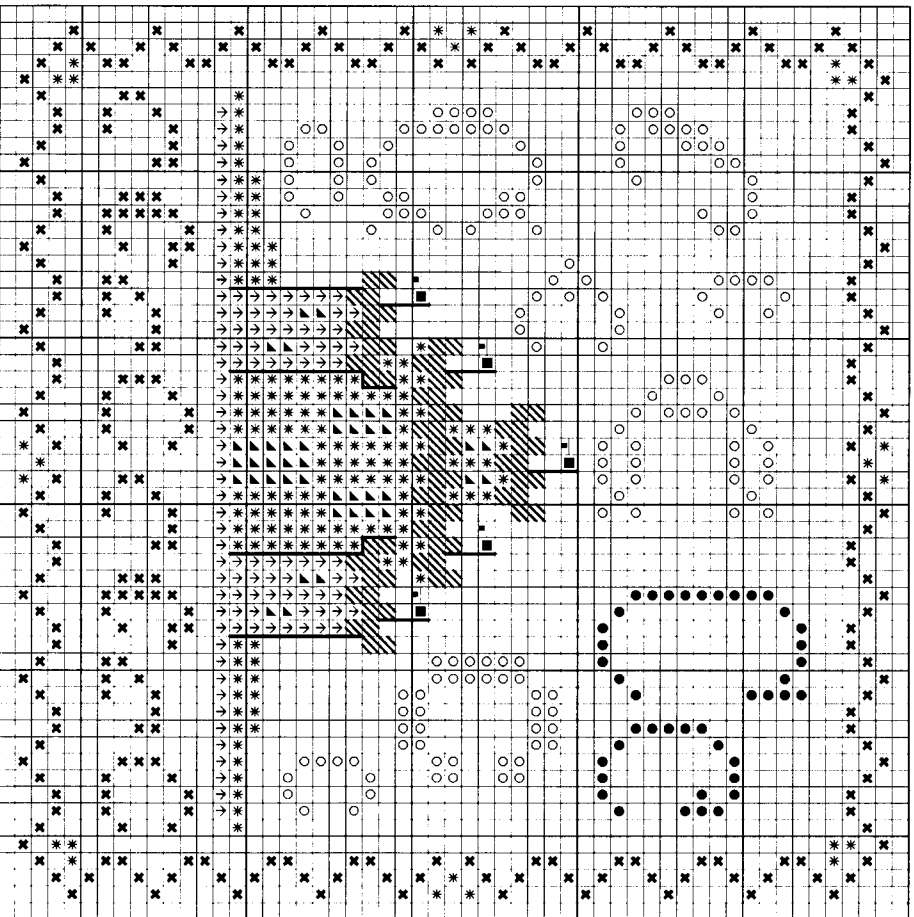
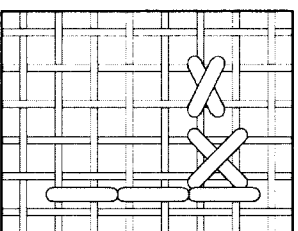


“C” is for Castle & the Cashmere Stitch

Stitch count: 53h x 53w – approx. 4”h x 4”w stitched over 2 threads on 28ct Clay Cashel linen from Zweigart (#3281-715)



- Rainbow Gallery Fibers - 1 card each**
- H618 Hi-lights Turquoise – 1 strand
  - \* M820 Mandarin Floss Camel – 2 ply
  - ✕ M828 Mandarin Floss Aqua – 2 ply
  - ↑ AP50 Petite Alpaca Medium Cocoa – 1 strand
  - S800 Splendor® Cool White – 2 ply
  - ▲ S1050 Splendor® Dark Brass – 2 ply
  - PB10 Petite Treasure Braid™ White Pearl (blend 1 strand with 1 ply of S800 Splendor®)

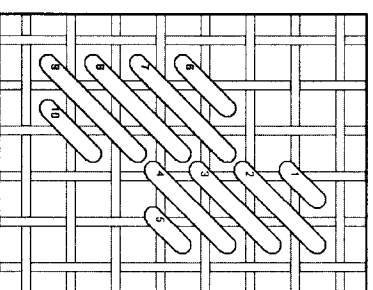


After completing all cross stitches, backstitch with 1 ply of S1050 along the edges of the castle towers and also the small flagpoles. The flags are one cross stitch with another small horizontal cross stitch (refer to the diagram above). Finally make the Cashmere stitches per the diagram, using the same thread as the tower was stitched with - Camel Mandarin to top the central towers and Med. Cocoa Petite Alpaca to top the side towers.

**Cashmere Stitch**

This is basically a set of small diagonal satin stitches. Two sets of stitches are shown to illustrate the staggered effect you will use when working the tops of the towers.

*NOTE: Grid lines in stitch diagram represent one thread of your evenweave or linen fabric. Numbers are shown where your needle comes up from beneath the fabric.*



See many more of our designs and learn more about our products at [www.rainbowgallery.com](http://www.rainbowgallery.com)

**ERICA MICHAELS**  
NEEDLEART DESIGNS

See more designs at [www.ericamichaels.com](http://www.ericamichaels.com)

Model framed by Lynne's Custom Framing, Clarksville TN  
East Side Mouldings #OCON, [www.eastsidemouldings.com](http://www.eastsidemouldings.com)  
Individual frame sizes: 5-3/4" square

Come back for next month's design, and collect the entire alphabet!