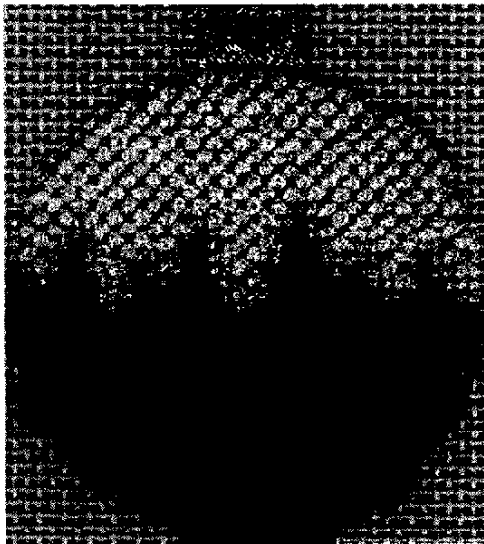
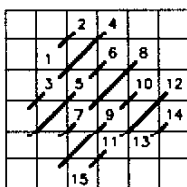
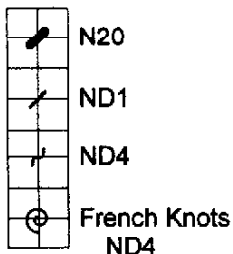
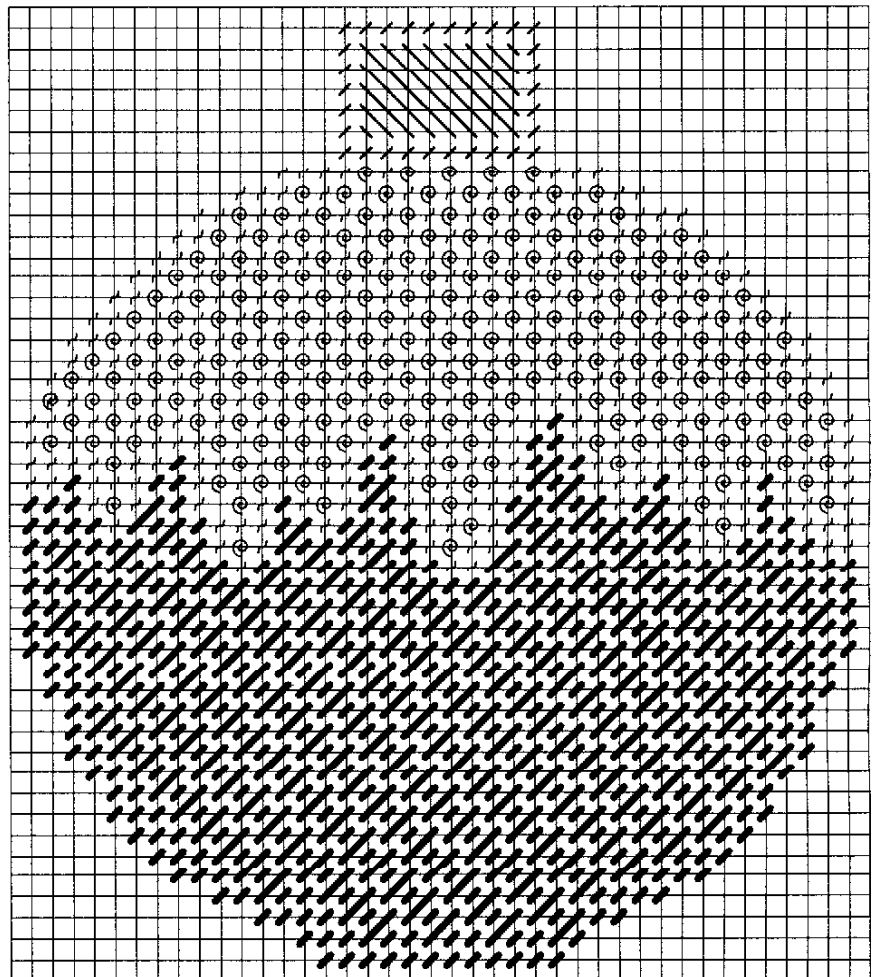


# Cheryl Schaeffer's Christmas Ornament ©1999 for Rainbow Gallery Variation #2



**MATERIALS:**

- 6" x 6"—#14 mono canvas (white)
- 1 card—Nordic Gold® ND1-Pale Gold
- 1 card—Nordic Gold® ND4-White Pearl
- 1 card—Neon Rays® N20-Red



**DIAGRAM #1**  
**Diagonal Mosaic Stitch**

Follow Master Chart and color legend.

1. Outline ball **only** in Tent Stitch using ND4 and N20; outline top of ornament with ND1. Fill in top with diagonal long stitches in ND1.
2. Follow Master Chart for Diagonal Mosaic Stitch in N20. See Diagram #1 for count.
3. Snow is alternate rows of Tent Stitch and French Knots in ND4.

Photocopying of this design is invited.

*Rainbow Gallery*

7412 Fulton Ave., #5, North Hollywood, CA 91605

Production by Lightworks