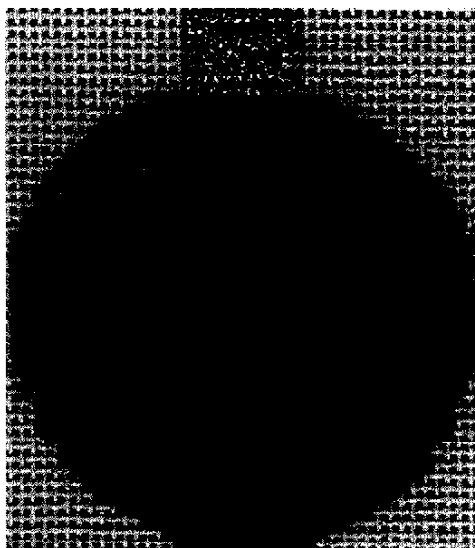
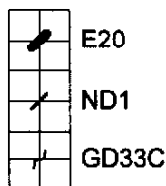
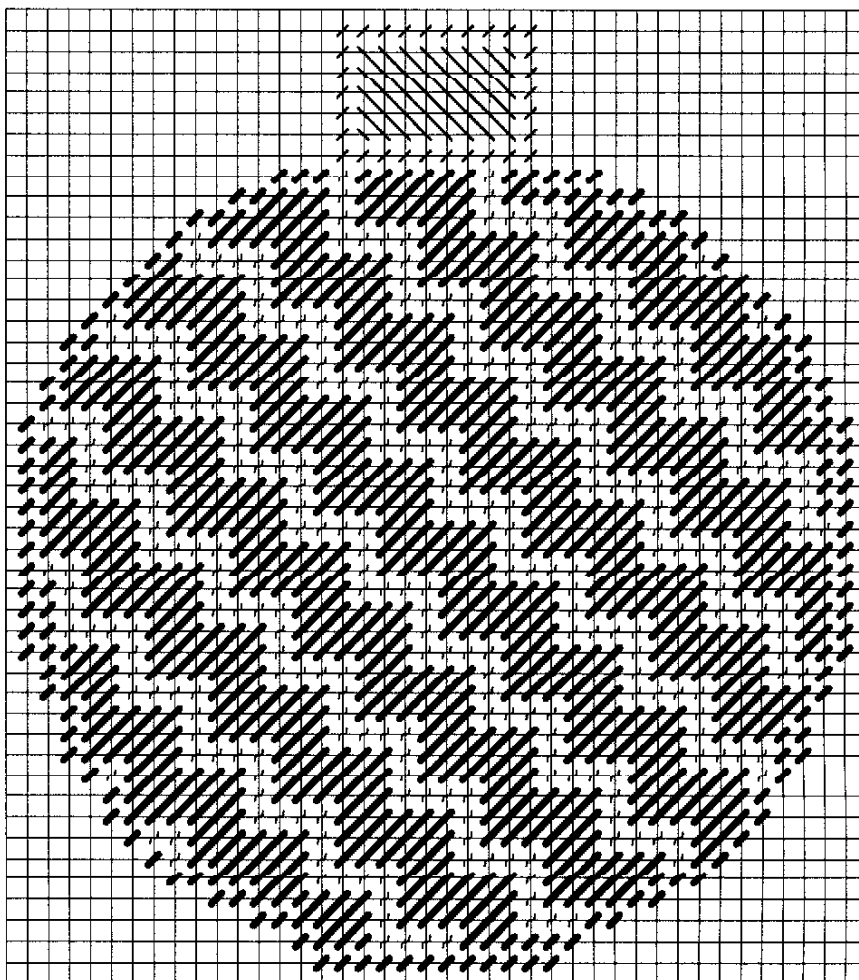


Cheryl Schaeffer's Christmas Ornament ©1999 for Rainbow Gallery Variation #3



MATERIALS:

- 6" x 6"—#14 mono canvas (sandstone)
- 1 card—Nordic Gold® ND1-Pale Gold
- 1 card—Encore! E20-Carousel
- 1 card—Gold Rush 18™ GD33C-Emerald



Follow Master Chart and color legend.

1. Outline ball **only** in Tent Stitch using E20; outline top of ornament with ND1. Fill in top with diagonal long stitches in ND1.
2. Follow Master Chart for Jacquard Stitch. Use E20 for the diagonal stitches over 3 threads and GD33C for the Tent Stitch rows.

Photocopying of this design is invited.

Rainbow Gallery

7412 Fulton Ave., #5, North Hollywood, CA 91605

Production by Lightworks