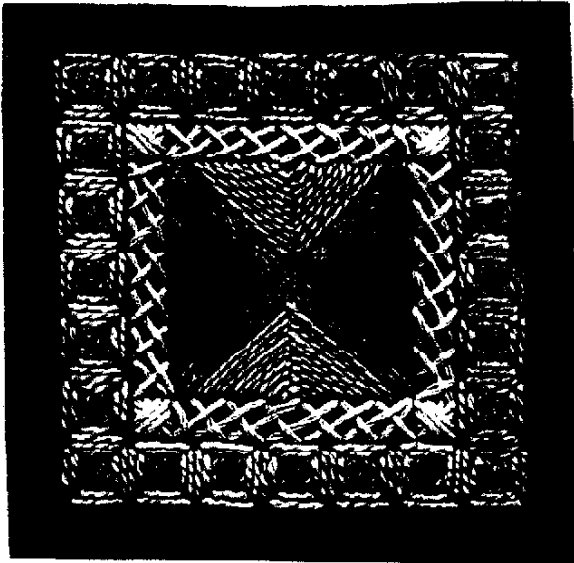


CONTRASTS^{©1993}

A Lyndsay Stewart Design for Rainbow Gallery

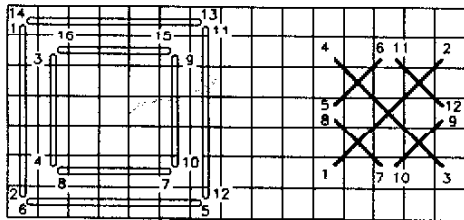


MATERIALS:

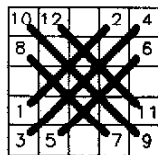
- 6" square —#18 mono canvas (tan)
(Finished size 2³/₄" square)
- 1 card—Overture™ V00 Ecu
- 1 card—Neon Rays™ N40 Beige
- 1 card—Pebble Perle™ P02 White
- 1 card—Gold Dust GD2C Gold

OR try your own color combinations.

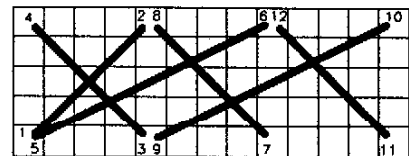
1. Stitch Captive Rice border first—1 ply of Overture for straight stitches (numbers); Rice stitch (letters) is placed inside straight stitches. Use Gold Dust. See Master Chart for placement and diagram below for count. Seven stitches are on each side.
2. Stitch a Bound Cross on each of the four corners. Turn the canvas each quarter. Use Pebble Perle. Upper left cross is numbered.
3. Using Pebble Perle do Long Armed Cross stitches between the Bound Crosses. Turn the canvas each quarter. Left vertical side is numbered.
4. The center cross is Gold Dust. Stitch from the Bound Crosses to the center, stitching the compensating stitches last.
5. A Triangle Fern stitch fits in the four remaining spaces. Turn canvas a quarter turn for each area. The top and bottom triangles are Neon Rays and the two side triangles are 1 ply Overture.



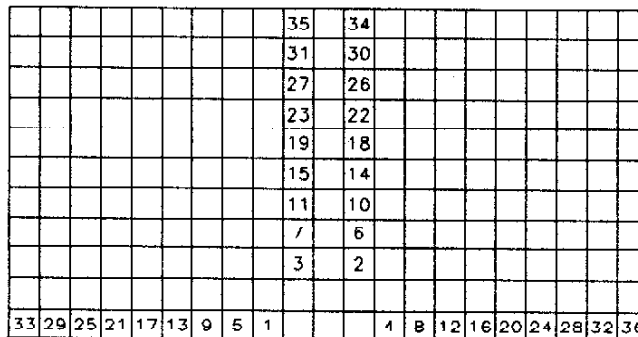
CAPTIVE RICE



BOUND CROSS

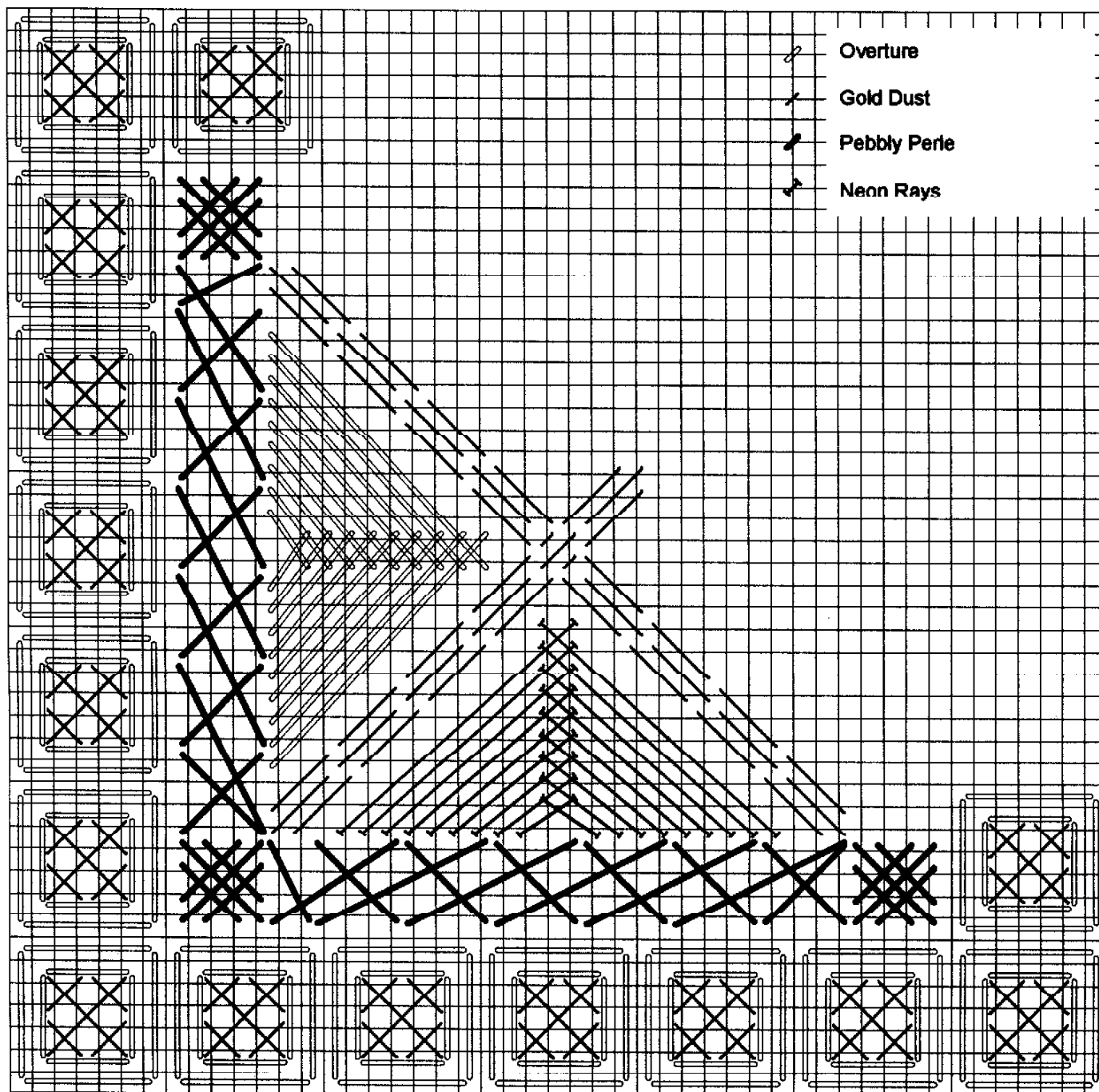


LONG ARMED CROSS



TRIANGLE FERN

MASTER CHART—BOTTOM LEFT HALF OF DESIGN



Permission granted for shop owners and guilds to copy. ©1993 Rainbow Gallery

Production by Lightworks