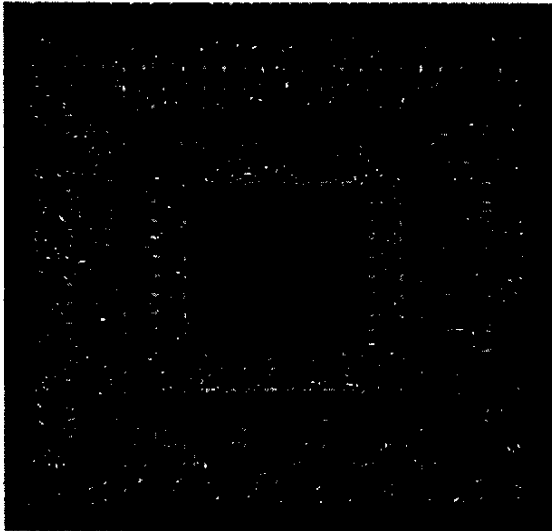


CROSS OVERS^{©1997}

Number Two in a Series

A Marla Pelz Design for Rainbow Gallery



MATERIALS

9" x 9" #13 Mono Canvas (White)
Bars to fit; #20 Tapestry Needle

1 card—Matte 18 M237-Seafoam
1 card—Super-Suede SS48-Violet
1 card—Rainbow Tweed RT09-Baby Green
1 card—Gold Rush 14® Variegated 216C-Lavender Mix

Alternate Color Scheme

1 card—Matte 18 M960-Dk. Terra Cotta
1 card—Super-Suede SS51 Brite Blue
1 card—Designer's Dream D10-Apricot
1 card—Gold Rush 14® Variegated 242C-Pale Blue Mix

Finished Size: 4¼" Square

The Master Chart shows the complete design. Start from the center and complete each row before going on to the next. Turn canvas ¼ turn after each row. Refer to Master Chart for placement and diagrams for count.

NOTE: All fibers are used as they come off the card unless otherwise noted.

Row 1. Slanted Gobelin to form a cross using Rainbow Tweed (3 strands of Designer's Dream). Fill in corners with Rice Stitch in Super-Suede.

Row 2. Reversed Mosaic in Matte Cotton. Upright Cross in Super-Suede. Note single Mosaic Stitches in center of row.

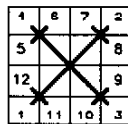
Row 3. Couching Stitch in Gold Rush 14. Start with mitered corner, do 3 long horizontal stitches, couch down, continue to next mitered corner.

Row 4. Large Smyrna Crosses in Super-Suede. Fill in with Vertical Elongated Smyrna Crosses using 1 ply of Rainbow Tweed (Designer's Dream).

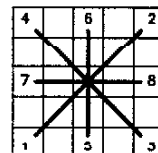
Row 5. Step Stitch alternating Matte Cotton and Gold Rush 14. Start with Matte Cotton at lower left. Fill in corners with Cross Stitch and Upright Cross Stitch using Matte Cotton.

Row 6. Modified Envelope Stitch—Diagonal Stitches and Modified Cashmere Stitch in Gold Rush 14. Straight Stitches in 2 ply Rainbow Tweed (2 strands of Designer's Dream).

Row 7. Do 3 rows of Continental with Matte Cotton.



RICE STITCH



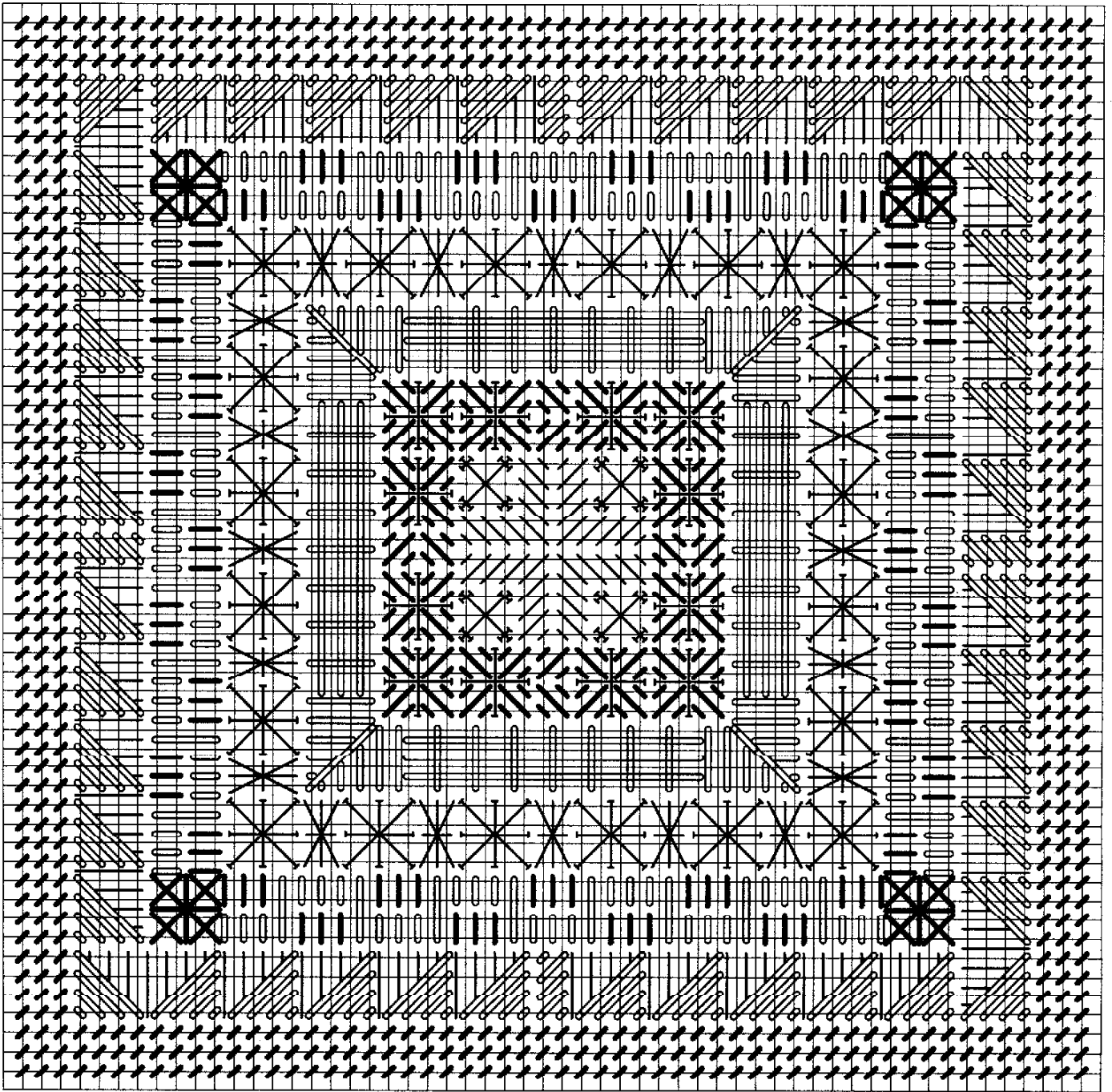
SMYRNA CROSS

Photocopying of this design is invited.

Rainbow Gallery

7412 Fulton Ave., #5, North Hollywood, CA 91605

Production by Lightworks



- | | |
|--|----------------------|
| | Matte 18 (M237) |
| | Super-Suede (SS48) |
| | Rainbow Tweed (RT09) |
| | Gold Rush 14 (216C) |