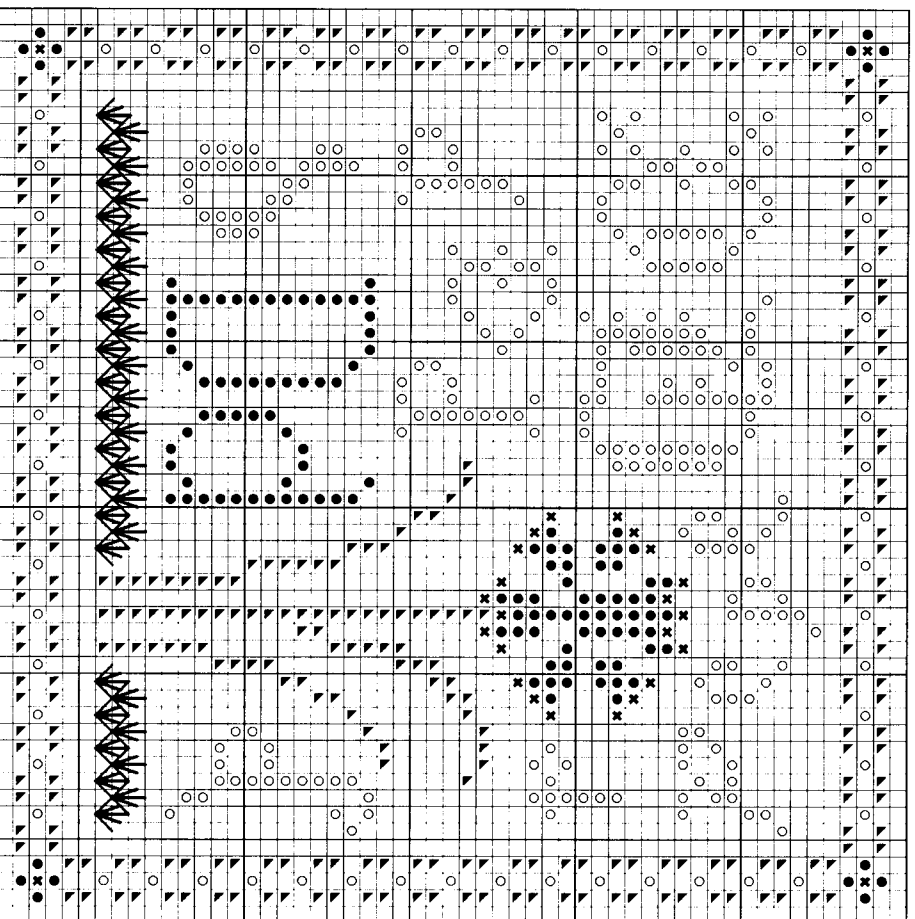


## “D” is for Daffodil & the Diamond Ray Stitch

Stitch count: 53h x 53w – approx. 4”h x 4”w stitched over 2 threads on 28ct Clay Cashel linen from Zweigart (#3281-715)



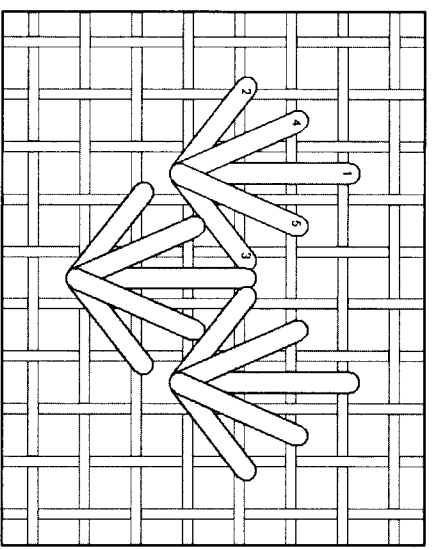
- Rainbow Gallery Fibers - 1 card each**
- ✱ H604 Hi-lights Brite Gold – 1 strand
  - M813 Mandarin Floss Yellow – 2 ply
  - ▲ P72 Pebbly Perle® Grass Green – 1 ply
  - S971 Splendor® Warm Yellow – 2 ply

After completing all cross stitches, work the Diamond Ray stitches with 1 ply of Green Pebbly Perle® per the chart and diagram.

**Diamond Ray Stitch**

Work the series of straight stitches from the outer edges into the common hole. Three sets of stitches are shown to illustrate where the stitches will “share” holes when working both staggered rows.

**NOTE:** Grid lines in stitch diagram represent one thread of your evenweave or linen fabric. Numbers are shown where your needle comes up from beneath the fabric.



See many more of our designs and learn more about our products at [www.rainbowgallery.com](http://www.rainbowgallery.com)

Model framed by Lynne's Custom Framing, Clarksville TN  
 East Side Mouldings #OCON, [www.eastsidemouldings.com](http://www.eastsidemouldings.com)  
 Individual frame sizes: 5-3/4" square

**ERICAMICHAELS**  
 NEEDLEART DESIGNS

See more designs at [www.ericamichaels.com](http://www.ericamichaels.com)

Come back for next month's design, and collect the entire alphabet!

