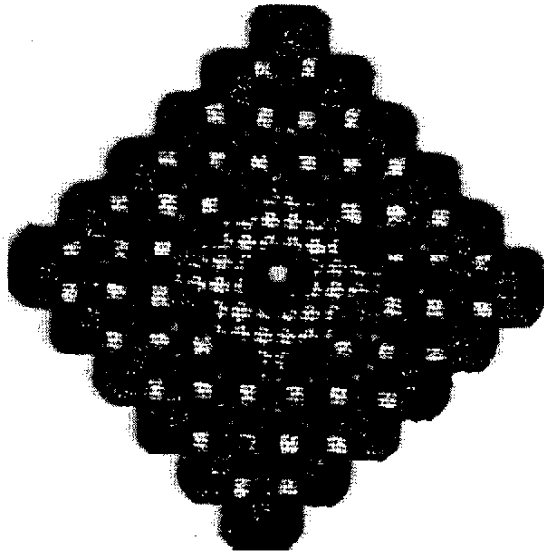


# DAKOTA HARDANGER ORNAMENT<sup>©1997</sup>

A Ruth Dilts Design for Rainbow Gallery



## MATERIALS:

- 6" x 6"—#22 Hardanger fabric (white)
- 1 card—Encore! E106-Dakota
- 1 card—Pebbly Perle® P07-Spode Blue
- 1 card—Nordic Gold® ND2-Gold

Choose your favorite colors in these threads for alternate color ways.

For additional information regarding Hardanger stitching techniques, see "Beginners Charted Hardanger Embroidery" by Meier/Watnemo, ©1980.

1. Do all Kloster Blocks using a full repeat of 1 ply Encore.
2. Do Buttonhole Stitch using a full repeat of 1 ply Encore. See Diagram #1.
3. Do Eyelets with Nordic Gold, pulling fairly hard so center will open. See Diagram #2. All even numbers go down in the center.
4. Cut areas as shown on Master Chart and remove threads.
5. Do the Woven Bars around the Kloster Blocks using 1 ply Pebbly Perle. See Diagram #3. Follow color legend with Master Chart.
6. Do the Dove's Eyes with 1 ply Pebbly Perle. If you weave bars by going down into bar, then you go down into Dove's Eye. If you weave bars going up, then you go up into Dove's Eye. See Diagram #4.
7. Work the Double Straight Cross Stitch with 1 ply Pebbly Perle. See Diagram #5.
8. Cut out around Buttonhole Stitch. Attach a hanger of Nordic Gold.

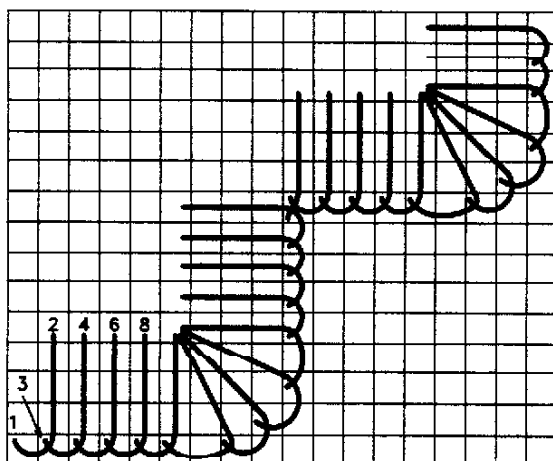


DIAGRAM #1—Buttonhole Stitch

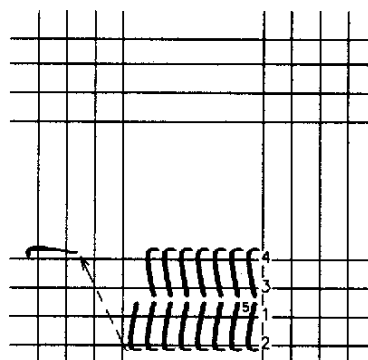


DIAGRAM #3—Woven Bars

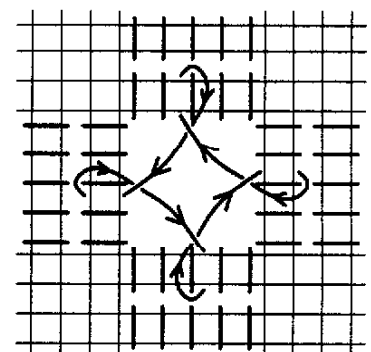


DIAGRAM #4—Dove's Eye

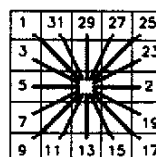


DIAGRAM #2  
Eyelet

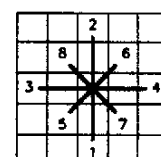


DIAGRAM #5  
Double Straight Cross

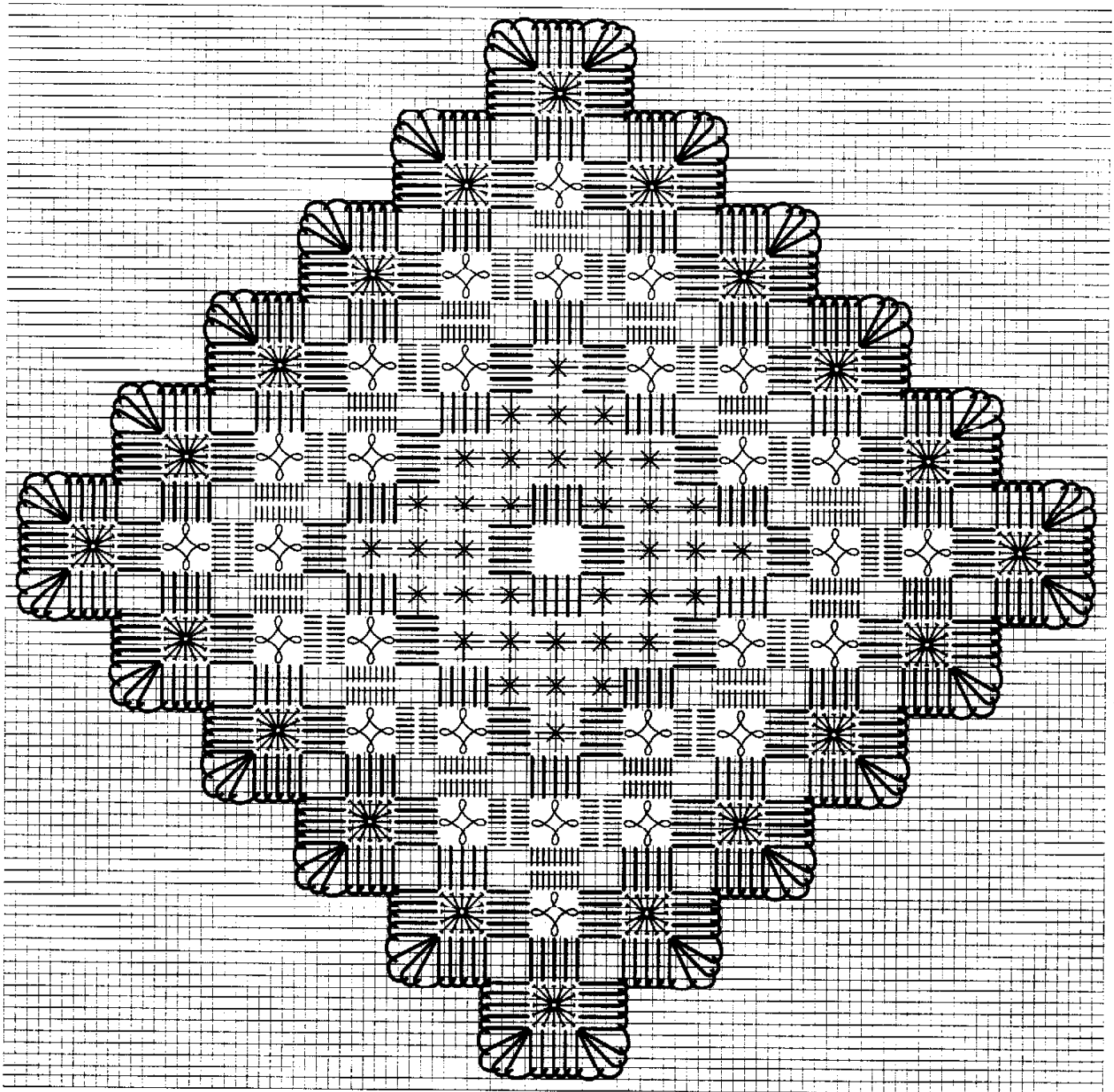
Photocopying of this design is invited.

*Rainbow Gallery*

7412 Fulton Ave., #5, North Hollywood, CA 91605

Production by Lightworks

# DAKOTA HARDANGER ORNAMENT ©1997



- |  |              |
|--|--------------|
|  | Encore!      |
|  | Nordic Gold  |
|  | Pebbly Perle |