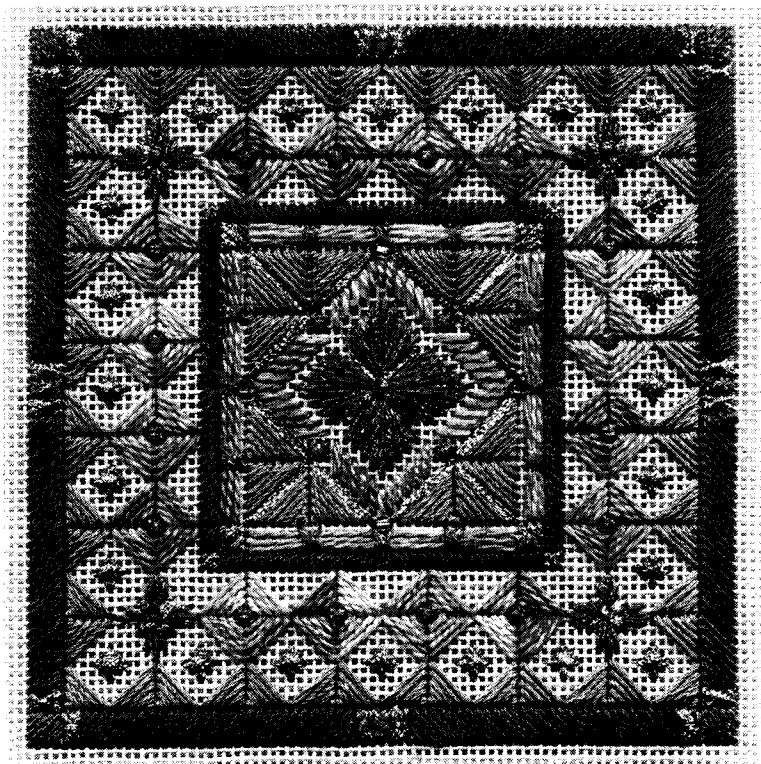


Desert Rose



General Instructions:

- To keep work taut, stretcher bars or scroll bars are highly recommended.
- Start all threads with a waste knot on top of canvas; end all threads by weaving them into the back of existing work. Avoid carrying threads across the back of unstitched canvas.
- When using the variegated thread, you stitch with 1 ply of the 4-ply cotton. Cut a length of thread, then separate it into 4 plies; but stitch with only 1 ply.
- When using the solid color Pebbly Perle, stitch with the whole strand.
- Before attaching canvas to stretcher bars or scroll bars, mark your starting point in the center of canvas.
- When using metallic ribbons or braids, cut and stitch with shorter pieces to avoid fraying.
- NOTE: Each LINE on the graphs represent one THREAD of the canvas.

These are the different stitches used in this design:

Stitching Instructions:

Center Block: Find and mark the center of your canvas. From the center of your canvas, Fan Stitch the petals of the central flower - going DOWN into the center - with 1 strand of Silk Lamé SL04. With 1 ply of the 4-ply Overture, Straight Stitch the row around the center flower; add Smyrnas with 1 strand of SL04. With 1 strand of Pebbly Perle P27, work the Diagonal Satin Stitch triangles. Lay long stitches outside triangles with 1 ply of Overture; tack long stitches with 1 strand of SL04. Add metallic stitches shown on graph with 1 strand of Fyre Werks Soft Sheen FT44.

Narrow Inner Border: Diagonal Satin Stitch the narrow inner border line with 1 strand of Pebbly Perle P65. Add tiny corner squares with 1 strand of FT44.

Diamond Border: Count up from narrow border, and stitch the row of variegated diamonds with 1 ply of Overture. Put a Smyrna Cross inside each diamond, using 1 strand of Silk Lamé Braid SL04. In the corners, work a small Fan Stitch flower with 1 strand SL04; put a cross stitch on top with 1 strand of metallic FT44.

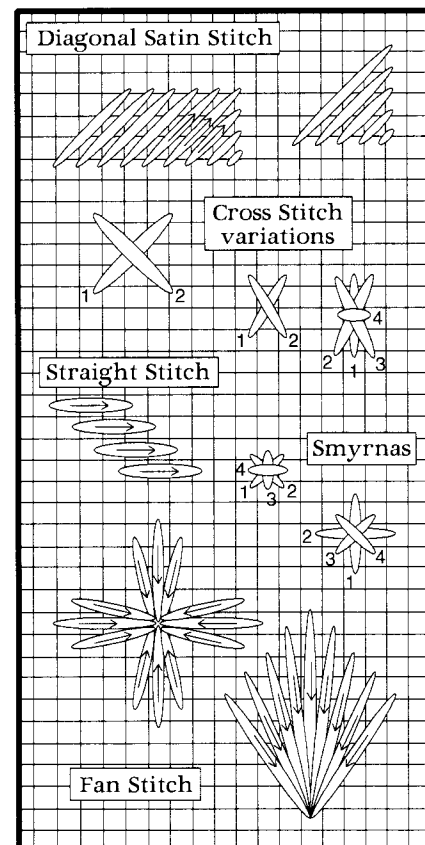
Smyrna Star Border: On the outside of the diamond row, create a row of Smyrna Stars, using 1 strand of the metallic Fyre Werks Soft Sheen FT44.

Outer Triangle Border: Work the outer triangle border with 1 strand of the lighter colored Pebbly Perle P27.

Wide Outer Border: Diagonal Satin Stitch the wide outer border, going over four threads of canvas, with 1 strand of the darker Pebbly Perle P65. NOTE: The border stitch direction changes in each quadrant of the design. At the center and corners of the border, add small Tied Long Crosses using 1 strand of metallic FT44. Then, in each corner and at the border centers, add the final accent stitches with 1 strand of Silk Lamé Braid SL04.

[OPTIONAL: Add some beads - of your own color choice - wherever you want. I've shown a few places to put beads on the main graph.]

Finishing Ideas: This small square design can be inset in a pillow; put on a wooden box top; set on point and made into an ornament; or framed in a small frame. Have fun with it!



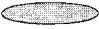

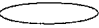



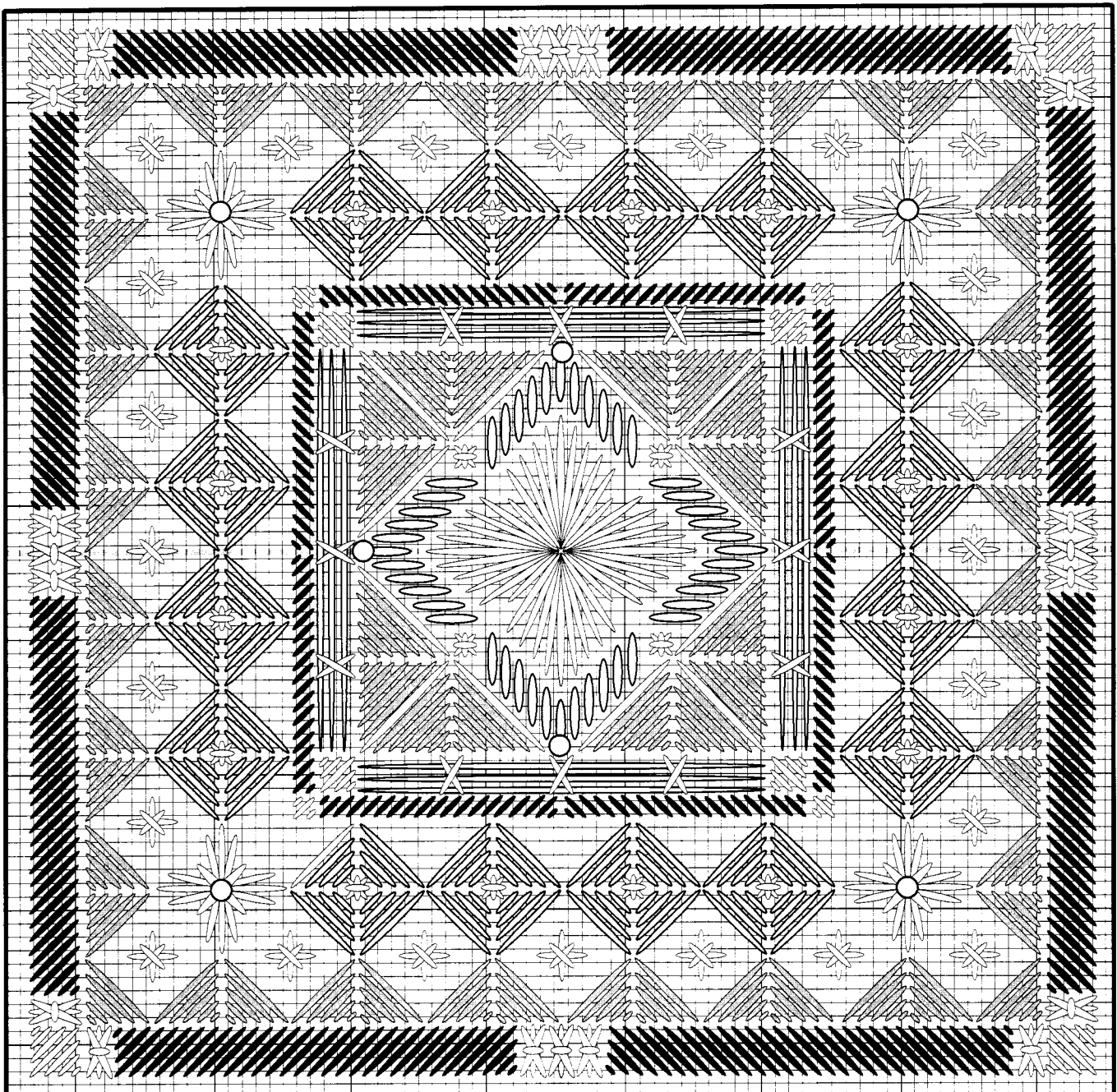
Designed for Rainbow Gallery
by

LAURA J. PERIN DESIGNS

712 COLLEGE ST. HEALDSBURG, CA 95448 650-823-5373
website: www.ljperindesigns.com

Desert Rose

Symbol	Materials	Design
	Overture (a 4-ply cotton), V124 - "Painted Sands"	Count: 78h x 78w threads Size: 18 ct: 4.5"h x 4.5"w (Cut canvas at least 8" x 8")
	Pebbly Perle, P65 - sage	
	Pebbly Perle, P27 - pale sage	<p><i>This design can be done in lots of different thread colors, on lots of different canvas colors. Use pale, bright or dark thread colors on light, medium or dark canvas. Pick your variegated thread first, then match two solid colors and two sparkly metallics to it. Have fun playing with this design!</i></p>
	Fyre Werks Soft Sheen, FT44 - adobe	
	Silk Lamé Braid, SL04 - antique rose	
	OPTIONAL: beads of your choice	
	#22 tapestry needle 8" x 8" 18 ct. mono canvas, in eggshell	



NOTE: Each LINE on this graph represent ONE thread of the canvas.