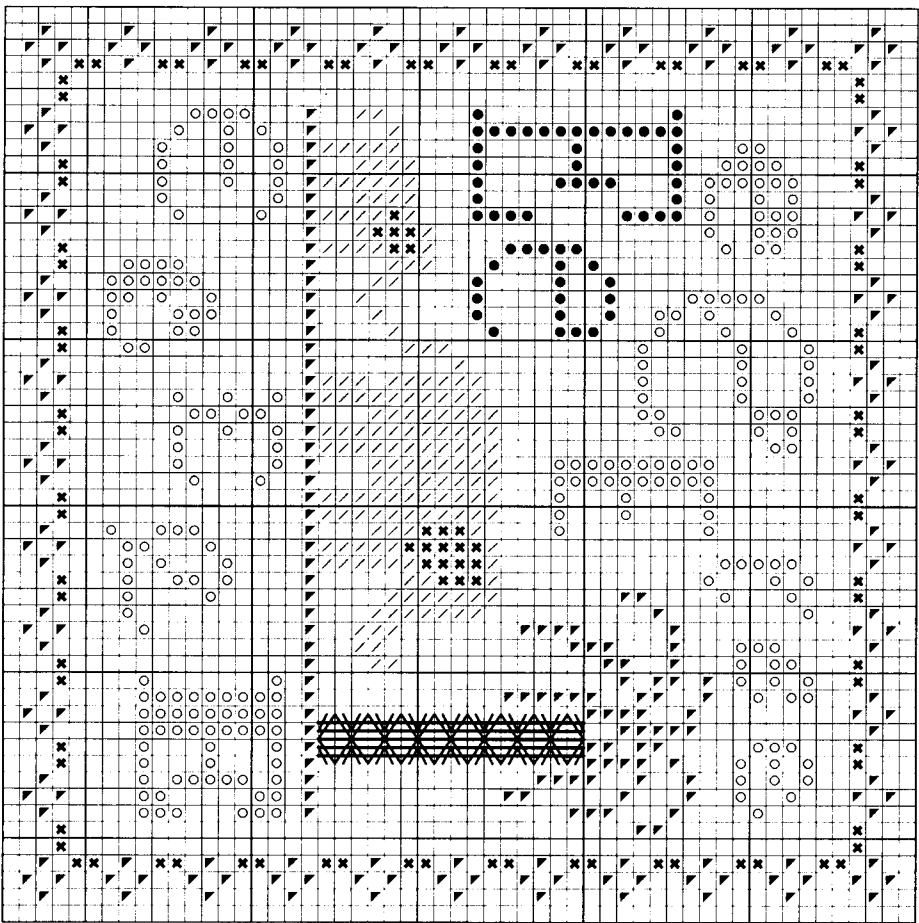


“E” is for Elephant & the English Stitch

Stitch count: 53h x 53w – approx. 4”h x 4”w stitched over 2 threads on 28ct Clay Cashel linen from Zweigart (#3281-715)



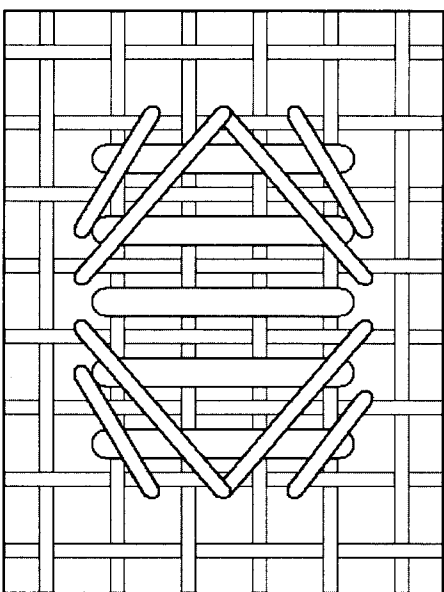
- Rainbow Gallery Fibers - 1 card each**
- ✓ M857 Mandarin Floss Confederate Gray – 2 ply
  - ✗ M858 Mandarin Floss Dark Confederate Gray – 2 ply
  - ✦ S831 Splendor® Forest Green – 2 ply
  - S851 Splendor® Brown – 2 ply
  - S853 Splendor® Dark Brown – 2 ply

After completing all cross stitches, work the tree trunk using the English Stitch per the directions below.

**English Stitch**

- 1) Work 5 vertical satin stitches over 4 threads with 2 ply of Dark Brown S853 (shown as white lines in the diagram).
- 2) Work straight stitches with 1 ply of Brown S851 as shown by the gray lines. There are a total of 8 sets of these stitches stacked one atop the other to form the tree trunk.

**NOTE:** Grid lines in stitch diagram represent one thread of your evenweave or linen fabric. Numbers are shown where your needle comes up from beneath the fabric.



See many more of our designs and learn more about our products at [www.rainbowgallery.com](http://www.rainbowgallery.com)

**ERICA MICHAELS**  
NEEDLEART DESIGNS

See more designs at [www.ericamichaels.com](http://www.ericamichaels.com)

Model framed by Lynne's Custom Framing, Clarksville TN  
East Side Mouldings #OCON, [www.eastsidemouldings.com](http://www.eastsidemouldings.com)  
Individual frame sizes: 5-3/4" square

Come back for next month's design, and collect the entire alphabet!