

# EYEGLOSS CASE & KEY RING <sup>©1992</sup>

A Carol Krob (Carol's Creations) Design for Rainbow Gallery

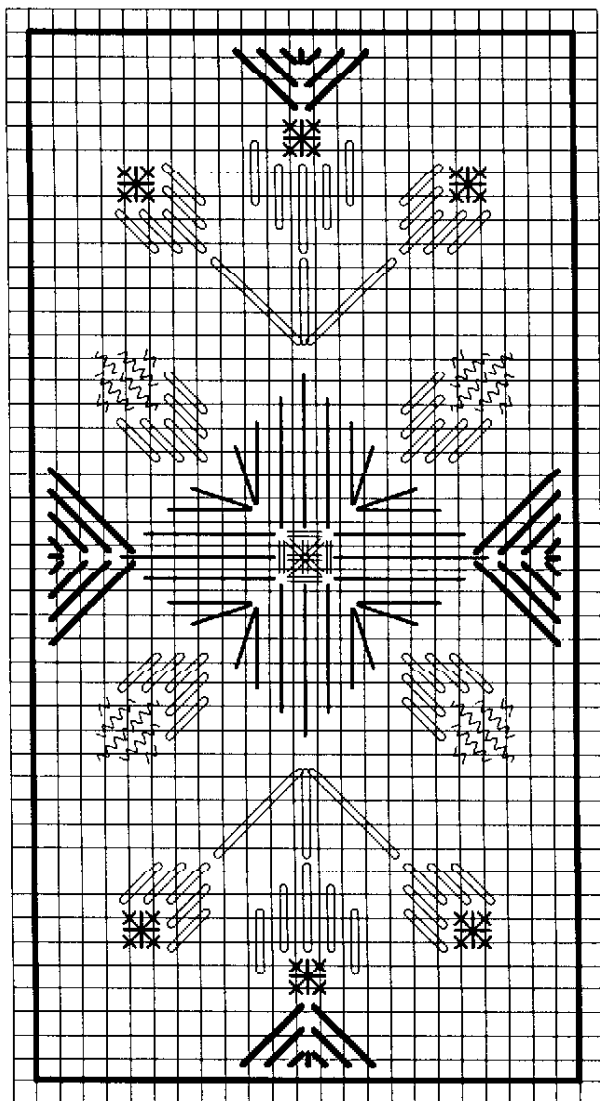
## MATERIALS

2—23 x 45 hole pieces—#7 Mesh Plastic Canvas\*  
2—13 x 13 hole pieces—#7 Mesh Plastic Canvas

#18 Tapestry Needle  
Plastic Canvas Cutter  
Key Ring (gold)  
Fabric for lining (optional)

Rainbow Gallery Plastic Canvas 7 Metallic Yarn  
4 yds—PC13 (Fuchsia)\*\*  
4 yds—PC12 (Peacock Blue)\*\*  
1 yd—PC8 (Pink)\*\*  
1 yd—PC14 (Light Blue)\*\*  
5 yds—PC17 (Forest Green)  
6 yds—PC1 (Gold)  
20 yds—PC10 (White Pearl)

\*To make a larger eyeglass case, add side strips (45 x 5 holes) and bottom strip (23 x 4 holes). Work with White Pearl in Slanting Gobelin stitch.  
\*\*Amounts given for one side. If stitching both front and back in same color, double quantity of desired shades. Adding side and bottom sections will require extra White Pearl and Gold.

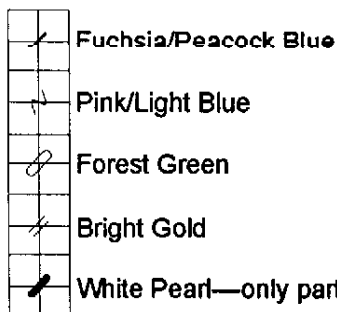


## Eyeglass Case

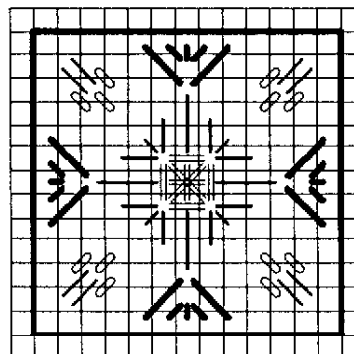
1. Work Gold Smyrna Cross in center of 23 x 45 hole canvas: make a large cross over two mesh and an upright cross on top. Outline with four backstitches. Work remaining motifs with Fuchsia, Pink, and Forest Green long straight stitches and Slanting Gobelin stitches. Fill in background with long Slanting Gobelin stitches using White Pearl. Reverse direction of stitches in each quadrant as shown. To keep stitches smooth and flat, guide yarn between thumb and forefinger of free hand while completing each stitch.
2. Work design on second 23 x 45 hole canvas piece, substituting Peacock Blue for Fuchsia and Light Blue for Pink. See \*\*.
3. With Gold, overcast top edge of front and back sections and whipstitch sections together along sides and bottom. (If adding lining, tack to inside of case before completing binding.)

## Key Ring

1. Work design on 13 hole canvas square, referring to Eyeglass Case instructions. Substitute Peacock Blue for Fuchsia on second square. See \*\*.
2. Whipstitch front and back sections together with Gold.
3. Attach keychain through hole in one corner of stitched canvas piece.



**Metallic Yarn Source:**  
Carol's Creations  
e-mail  
[carolscreations@home.com](mailto:carolscreations@home.com)



Photocopying of this design is invited.  
Rainbow Gallery

7412 Fulton Ave., #5, North Hollywood, CA 91605