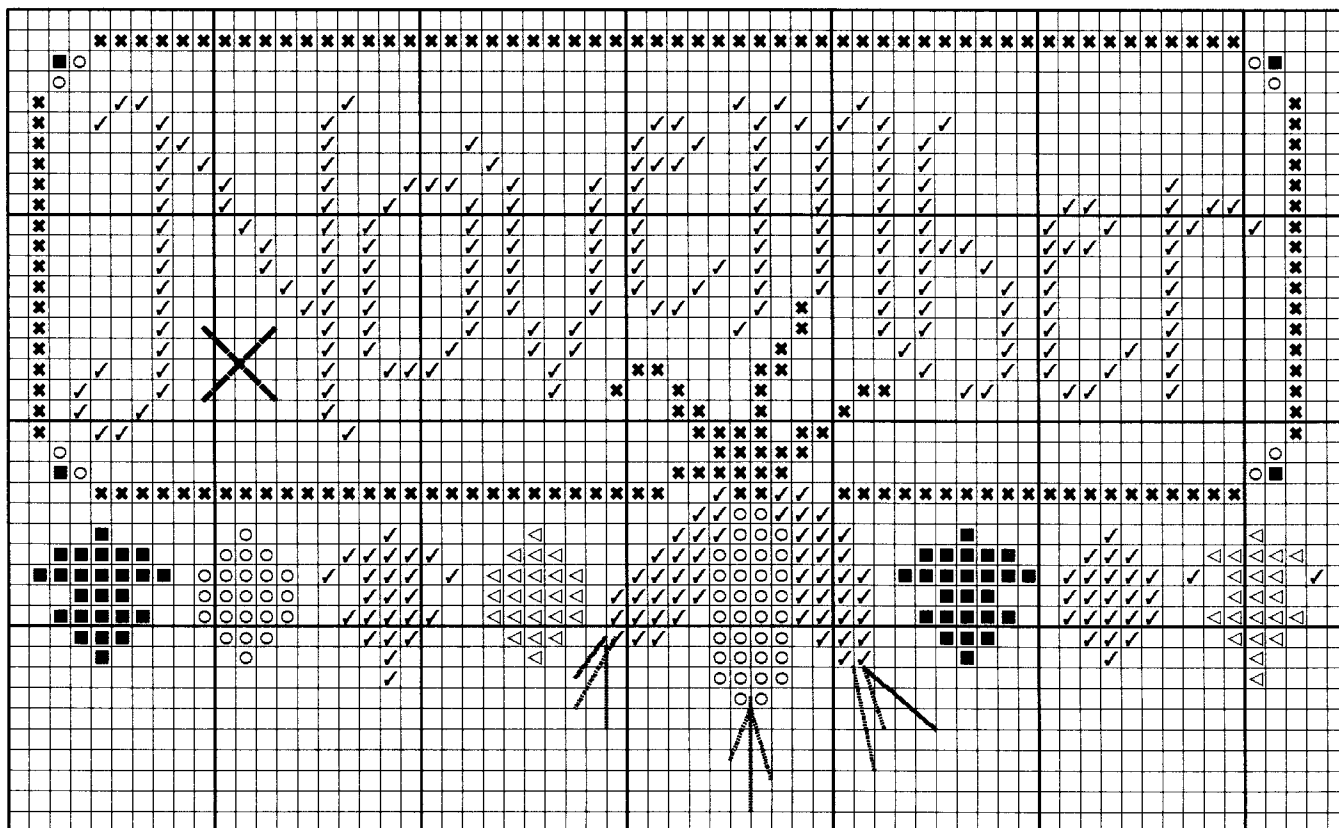


November - the Fall Harvest

Stitch count: 38h x 63w – approx. 4”h x 7”w ♡ 18ct Natural Light linen from Wichelt (#59-140)



Rainbow Gallery Fibers - 1 card each

- H11 Cashmere Burgundy – 1 strand
- ✓ G902 Grandeur™ Lt Golden Brown – 1 strand
- ✕ RT26 Rainbow Tweed Sea Green – 2 ply
- △ S1081 Splendor™ Dark Brick – 4 ply
- V643 Petite Very Velvet Pale Golden Brown – 1 strand

Complete all cross stitches over 2 threads per chart. Straight stitch corn “silk” with 1 strand Very Velvet.

Attach the leaf button where indicated by the large “X” under the N.

(1) #2277.T tiny pumpkin leaf button from Just Another Button Co.

Go to www.ericamichaels.com for

ERICA MICHAELS
DESIGNS FOR COUNTED CROSS STITCH

More designs by Linda Stolz

See many more of our designs and learn more about our products at www.rainbowgallery.com

Model framed by Homespun Corner, Clarksville TN with East Side Mouldings #OCPM (pumpkin)

Come back for each new monthly design!