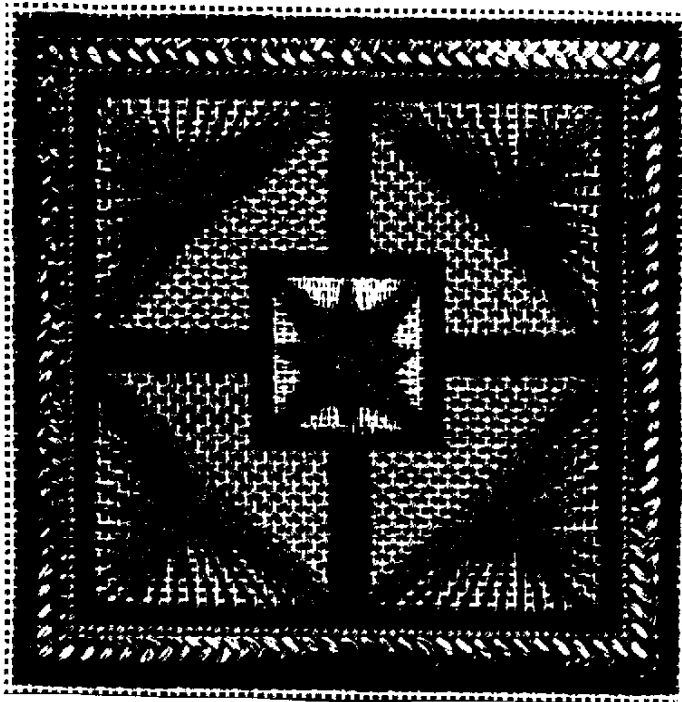


FARRIS PARK[®]

A Leigh Ragan Design for Rainbow Gallery



Finished size: 3³/₄" square

1. Stitch small Amadeus in center of canvas using 1 strand Tiara. See Master Chart for count. #2 will be the center of the canvas.
2. Stitch Mosaic Stitches around center using 1 strand Rainbow Linen. See Diagram #1.
3. Fill in stitches between small Amadeus and Mosaic Stitches with straight stitches using 1 strand Designer's Dream.
4. Stitch all Mosaic Stitches from inside border to outside using 1 strand Rainbow Linen. See Diagram #1
5. Stitch Sprat's Head, Chicago Variation, in each corner using 1 strand Tiara. See Master Chart for count.
6. Stitch T-Stitch to fill in corners using 3 ply Splendor. Splendor is 12 ply in 3 bundles of 4 ply. Pull out one bundle and then one strand from the bundle. See Diagram #2
7. Stitch 1 row of Continental outside Mosaic borders with 4 ply Splendor.
8. Stitch Woven Band using 1 ply Overture. Do all stitches facing same direction first, then come back and cross them. Refer to Diagram #3 for weaving.
9. Using 1 strand Rainbow Linen, stitch Smyrna Crosses in each corner, making sure all top stitches face the same direction. See Diagram #4.
10. Use 1 strand Rainbow Linen to add the Greek Stitch between the Smyrna Crosses. Be sure to always start from the left hand side, so turn your canvas to make it easier. See Diagram #5

MATERIALS

8" x 8"—#18 Mono canvas (white)

Stretcher bars to fit

#22 Tapestry Needle

1 card each:

Overture[®]; Splendor[®]; Designer's Dream

2 cards each:

Tiara[®]; Rainbow Linen

COLOR CHOICES

Overture V102-Iris

Splendor S873-Lite Violet

Tiara T109-Lt. Blue Multi

Rainbow Linen R442-Teal

Designer's Dream D02-White

OR

Overture V61-Ocean Blues

Splendor S870-Green Aqua

Tiara T113-Turquoise

Rainbow Linen R422-Rose

Designer's Dream D08-Pale Pink

OR

Overture V106-Dakota

Splendor S817-Pumpkin

Tiara T106- Copper

Rainbow Linen R433-Lt. Olive Green

Designer's Dream D03-Ecru

OR

Overture V117-Posies

Splendor S807-Lite Purple

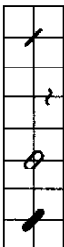
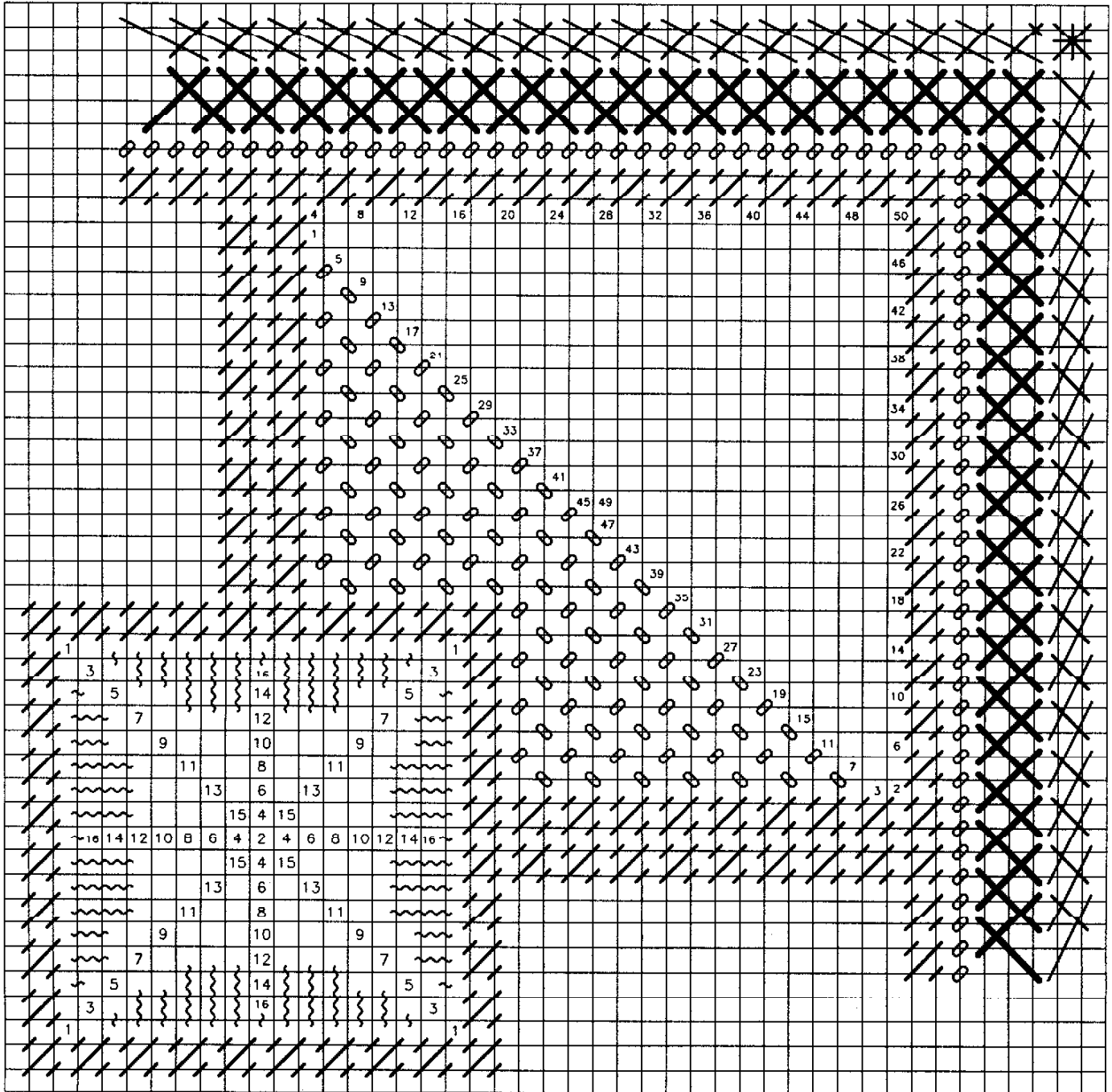
Tiara T123- Pink

Rainbow Linen R444-Blue Aqua

Designer's Dream D02-White

MASTER CHART—Upper Right Quarter

Stitch upper right quadrant first, then turn your canvas so that each successive quadrant is an upper right quadrant.



Rainbow Linen

Designer's Dream

Splendor

Overture

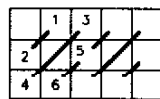


Diagram #1

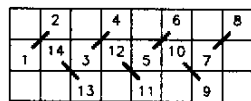


Diagram #2

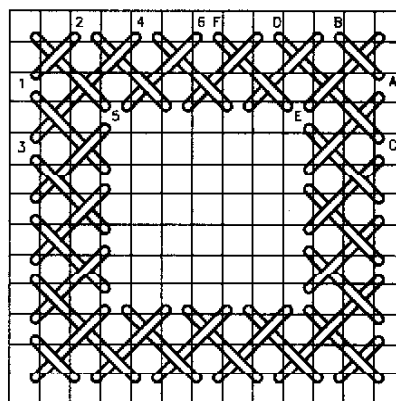


Diagram #3

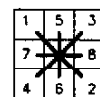


Diagram #4

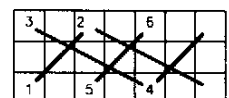


Diagram #5