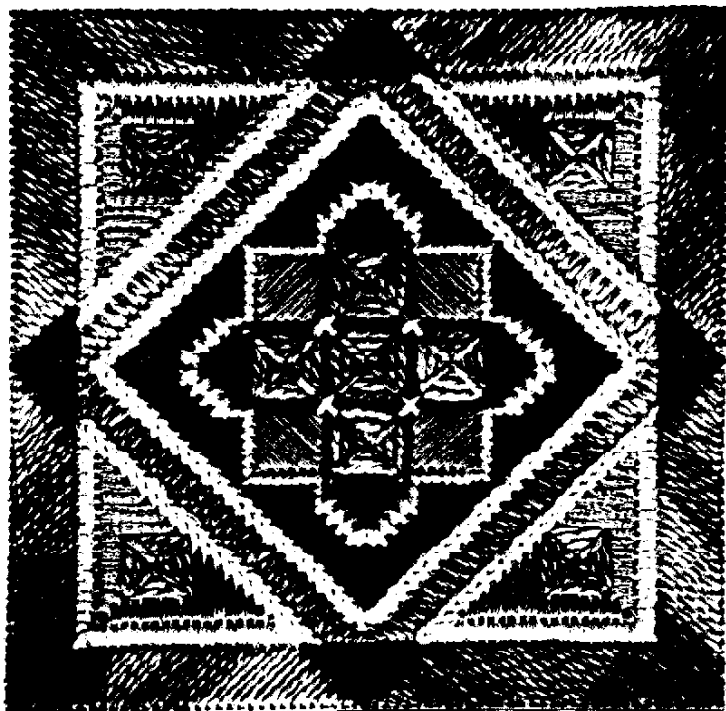


# FLORAL CROSS QUILT BLOCK<sup>©1992</sup>

Number Three In a Series by Marle Ary for Rainbow Gallery



9" x 9"—#18 White Mono Canvas  
(Finished size 4" x 4")

- 1 Card Overture™ V52—Normandy
- 1 Card Neon Rays™ N91—Silver
- 1 Card Pebbly Perle™ P02—White
- 1 Card Pebbly Perle™ P10—Mauve

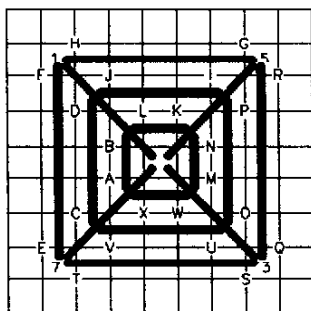
### Alternate Color Schemes:

- 1 Card Overture™ V75—Dried Flowers
- 1 Card Neon Rays™ N29—Burgundy
- 1 Card Pebbly Perle™ P02—White
- 1 Card Pebbly Perle™ P27—Pale Green
- 1 Card Overture™ V33—Brandywine
- 1 Card Neon Rays™ N03—Pale Beige
- 1 Card Pebbly Perle™ P02—White
- 1 Card Pebbly Perle™ P09—Dark Blue

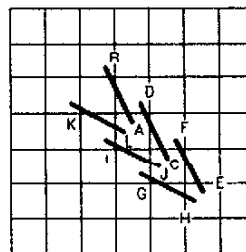
Or pick your own.

Start with center block. Work completely around and out. All Overture is one ply.

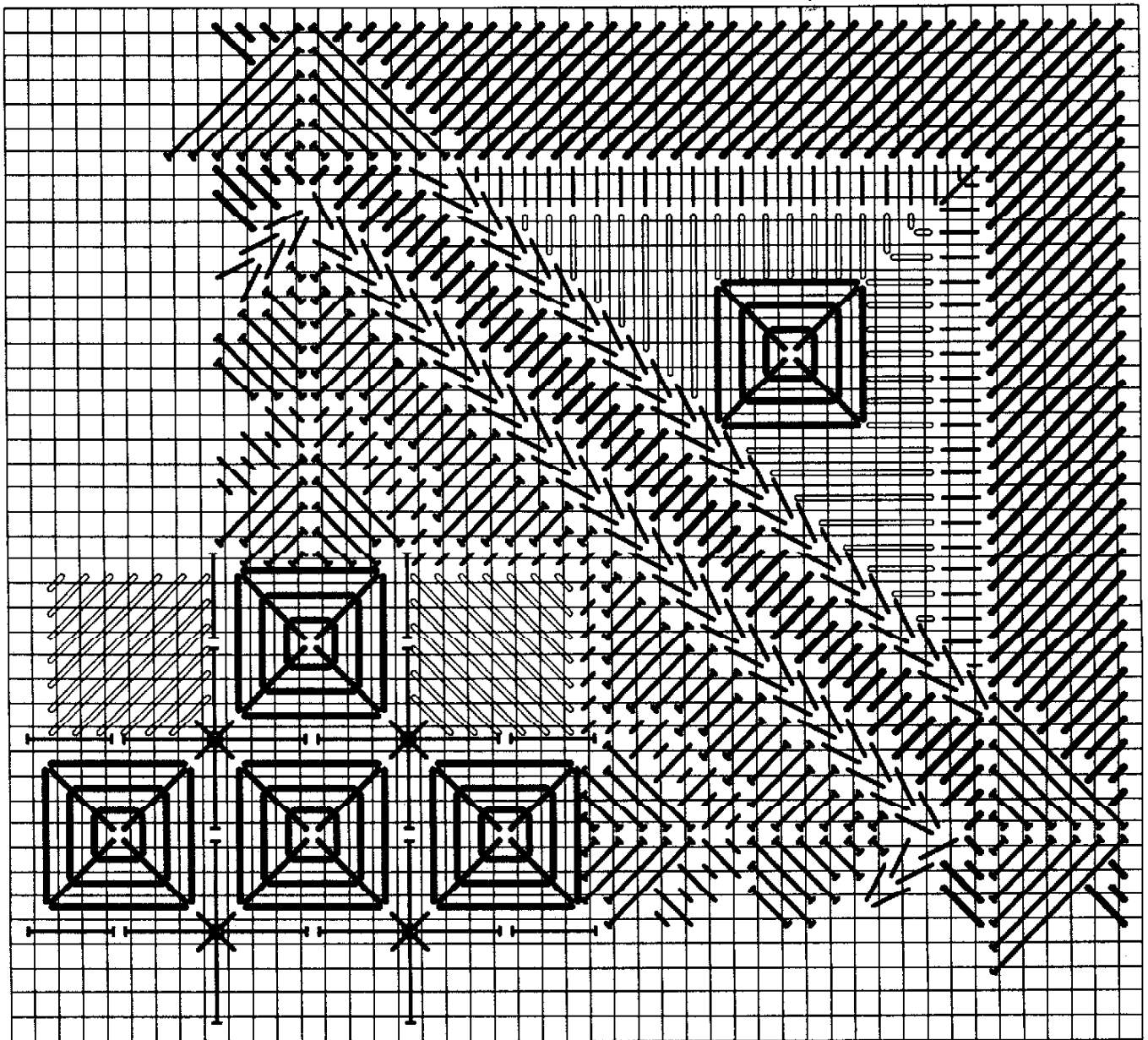
1. Work the five Overture squares first, following letters then numbers on chart below. Follow with the four Neon Rays squares. Next, work the dark Pebbly Perle crosses, then the the light Pebbly Perle center cross stitches.
2. Work the dark Pebbly Perle diagonal stitches that form triangles.
3. Diagonal stitch the light Pebbly Perle border around the center.
4. In dark Pebbly Perle follow with the larger diagonal stitch border.
5. The next border is the Diagonal Knitting stitch in light Pebbly Perle.
6. The next border is a staggered diagonal stitch in Overture.
7. Work another border of Diagonal Knitting stitch in light Pebbly Perle.



INDIVIDUAL SQUARES



DIAGONAL KNITTING STITCH



8. Work the vertical filler stitches in Neon Rays.
9. In the four openings, work an individual square using Overture.
10. Vertical stitch over 2 threads in light Pebbly Perle with miter at corners.
11. Diagonal stitch the four triangles using dark Pebbly Perle.
12. Finish with outer Diagonal stitch border in Overture.

Permission granted for shop owners and guilds to copy. ©1992 Rainbow Gallery