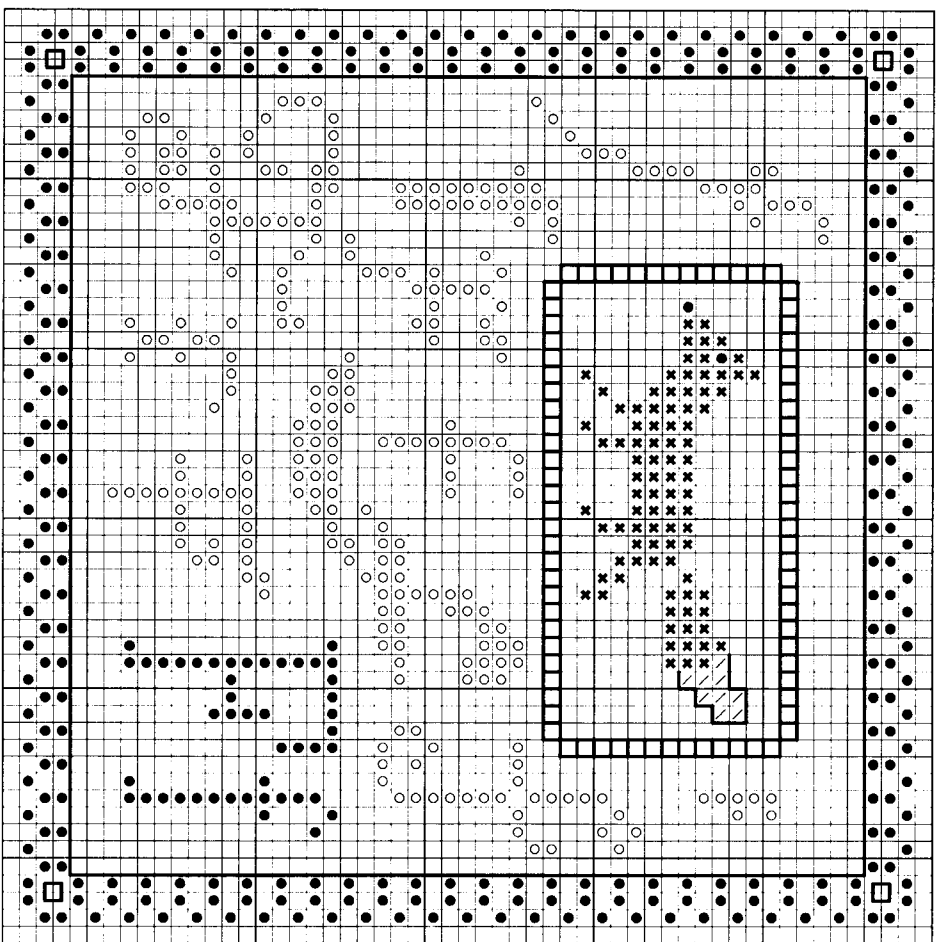


“F” is for Fox & the Four-Sided Stitch

Stitch count: 53h x 53w – approx. 4”h x 4”w stitched over 2 threads on 28ct Clay Cashel linen from Zweigart (#3281-715)



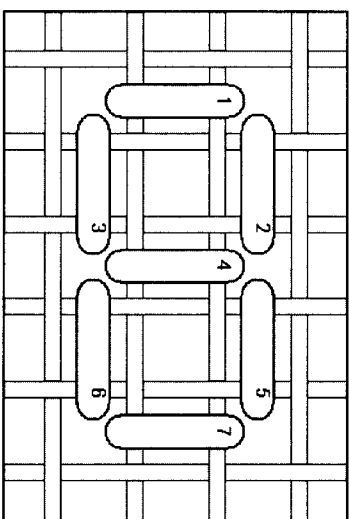
- Rainbow Gallery Fibers - 1 card each**
- M822 Mandarin Floss Dark Bark – 2 ply
 - S916 Splendor® Dark Antique Blue – 2 ply
 - ✱ W77 Wisper Russet – 1 strand
 - ∨ W89 Wisper Ecru – 1 strand

After completing all cross stitches, outline the ecru tip of the tail with 1 ply of Dark Bark Mandarin Floss. Also backstitch all the way around the inside edge of the outer border with 1 ply of Russet Wisper. Work the Four-Sided stitch as a border for the fox and also single Four-Sided stitches are placed in each corner of the outer border in 1 ply M822.

Four-Sided Stitch

You are just “outlining” a square of 4 threads with this stitch. It can be pulled or not pulled, depending on the effect you desire (it was not pulled in our model).

NOTE: Grid lines in stitch diagram represent one thread of your evenweave or linen fabric. Numbers are shown where your needle comes up from beneath the fabric.



See many more of our designs and learn more about our products at www.rainbowgallery.com

Model framed by Lynne's Custom Framing, Clarksville TN
 East Side Mouldings #OCON, www.eastsidemouldings.com
 Individual frame sizes: 5-3/4" square

ERICA MICHAELS
 NEEDLEART DESIGNS

See more designs at www.ericamichaels.com

Come back for next month's design, and collect the entire alphabet!