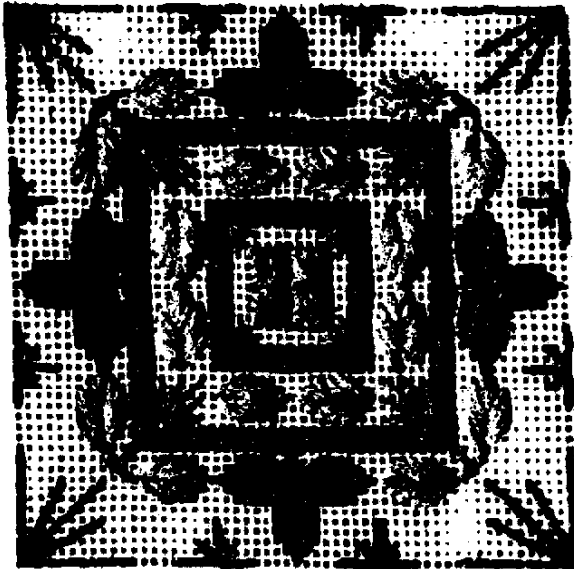


FROSTY AUTUMN LEAVES^{©1992}

A John R. Patterson Design for Rainbow Gallery

MATERIALS:

8" x 8" piece—#18 White Mono Canvas
(Finished size—3" x 3")



1 card each—Frosty Rays: Y047 (Lite Blue);
Y050 (Antique Blue); Y060 (Lite Tan);
Y063 (Medium Tan)

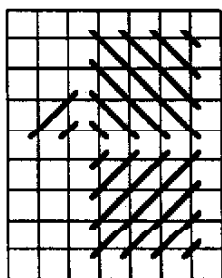
1 card each—Tiara: T108 (Black Multi);
T109 (Lite Blue Multi)

MASTER CHART ON BACK PAGE

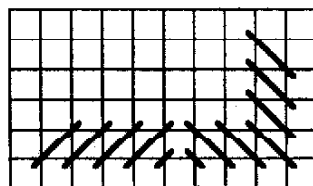
1. Reversed Cushion stitch using Frosty Rays Y047 (Lite Blue) is placed in center.
2. Inner border is Slanted Gobelin stitch (over 2 threads). Work in Frosty Rays Y050 (Antique Blue). Reverse slant at each quarter.
3. Leaf stitches are placed just outside border. Use Frosty Rays Y060 (Lite Tan).*
4. Second border of Slanted Gobelin (over 2 threads) is worked in Frosty Rays Y050 (Antique Blue). Reverse slant at each quarter. Add three-lobed leaves in same color Frosty Rays as border.
5. Leaf stitches are placed just outside second border. Use Frosty Rays Y060 (Lite Tan).*

6. Complete design by stitching Ray Stitch Variations with Tiara T109 (Lite Blue Multi) inside the Gobelin borders and Tiara T108 (Black Multi) outside the second border.

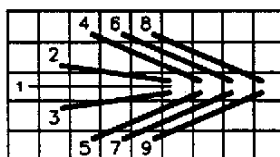
*OPTIONAL: Choose your own colors OR make each leaf a different color of Frosty Rays.



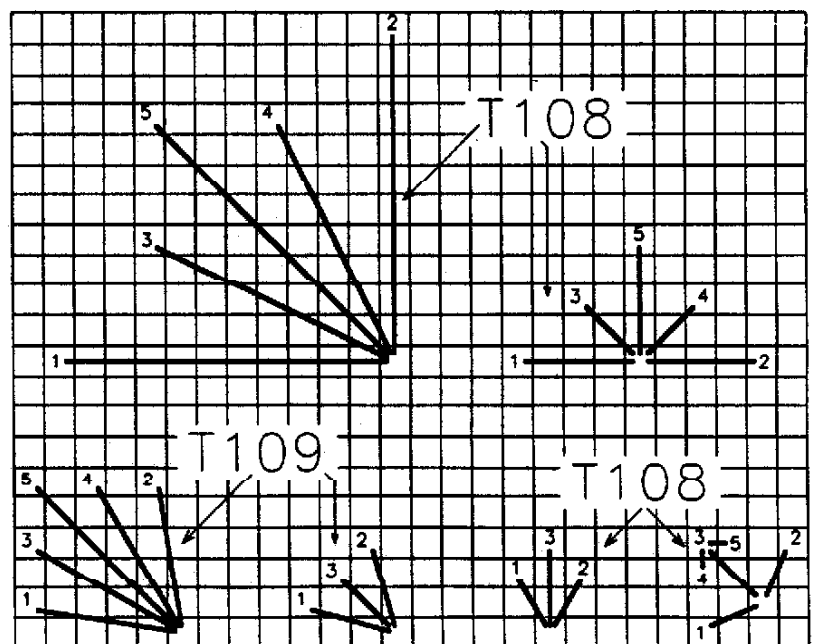
REVERSED
CUSHION STITCH



GOBELIN STITCH



LEAF STITCH



RAY STITCH VARIATIONS

