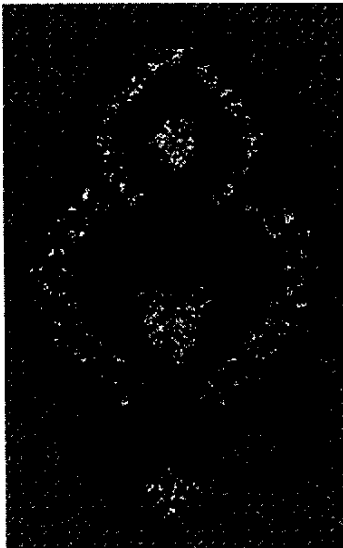


FYRE WERKS FANTASY^{©1998}

A Joan Barancik Design for Rainbow Gallery



MATERIALS

8" x 8"—#18 Mono Canvas (Pale Blue)

Bars to fit

#22 & #24 Tapestry needles

1 card of each of the following:

Fyre Werks[®] F5-Silver

Fyre Werks[®] F10-White Pearl

Fyre Werks[®] F36-Royal Blue

Fyre Werks[®] F38-Red

Coronet Braid Size 8™—90B-Royal Blue

Coronet Braid Size 4™—46B-Red

A big "thank you" to Jean Hilton for the use of several of her great stitches!

1. Mark top of canvas. Find the center of the canvas. Count down 10 threads and left 7 threads. This will be #1 in the first Fleur de Lis Crescent. Use Fyre Werks F36. Follow count in Diagram #1.

NOTE: After working to #35, all odd numbers will share with even holes (#37 with #2, #39 with #4, etc.). After #40, all stitches go down in this hole, from #42 through #66. Work the adjoining mirror image, beginning in shared #1 hole.

2. Fill center of Crescents with straight stitches. Use Fyre Werks F10. See Diagram #2 for count and Master Chart for placement.
3. Stitch Jessica with Fyre Werks F38. See Diagram #3 for count and Master Chart for placement. Start sliding under at 33-34.
4. Place a Rhodes stitch in center of Jessica using Fyre Werks F10. See Diagram #4.
5. Stitch a small Sprat's Head with Fyre Werks F38. See Diagram #5 for count and Master Chart for placement.
6. Below Sprat's Head, stitch "pendant" in straight stitches of Fyre Werks F10.
7. Work Smyrna Crosses in Fyre Werks F5 around Jessica. See Diagram #6 for count and Master Chart for placement. Add a Fancy Cross Stitch at top following Diagram #7.
8. Cross Stitches (over 4 threads) are worked in Fyre Werks F5. Stitch Upright Crosses (over 2 threads) of Coronet Braid 90B. See Master Chart.
9. Stitch Cross Stitches (over 1 thread) with Coronet Braid 46B. Add a Smyrna Cross in the same braid between Jessica and Fleur de Lis.
10. Fill in border with Coronet Braid 90B—straight stitches at the bottom and Stem Stitch along the top. Work the Stem Stitch from the bottom up on each side.

4	6	2
8		7
1	5	3

DIAGRAM #6
Smyrna Cross

4	8	6	2
12			10
9			11
1	5	7	3

DIAGRAM #7
Fancy Cross

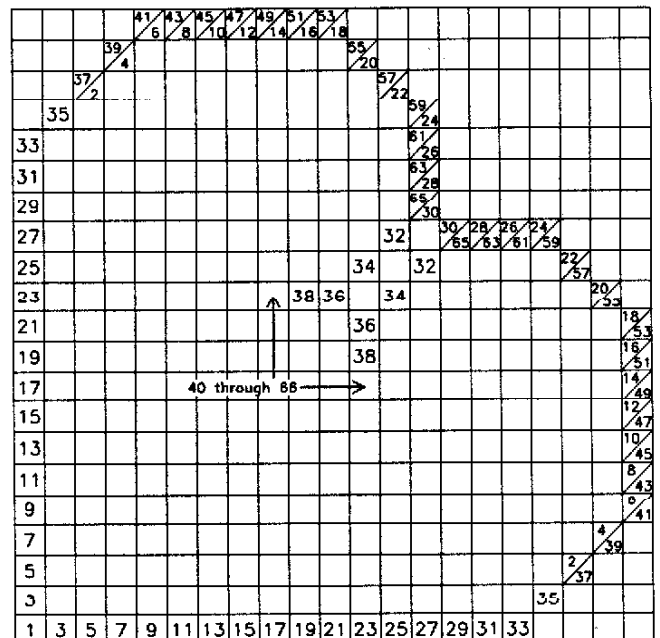


DIAGRAM #1—Fleur de Lis Crescent

Photocopying of this design is invited.

Rainbow Gallery

7412 Fulton Ave., #5, North Hollywood, CA 91605

Production by Lightworks

FYRE WERKS FANTASY[®]—MASTER CHART

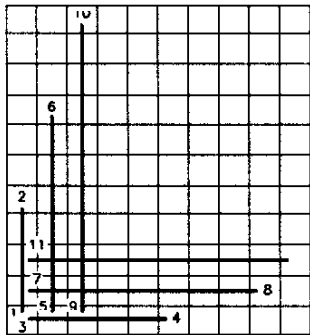
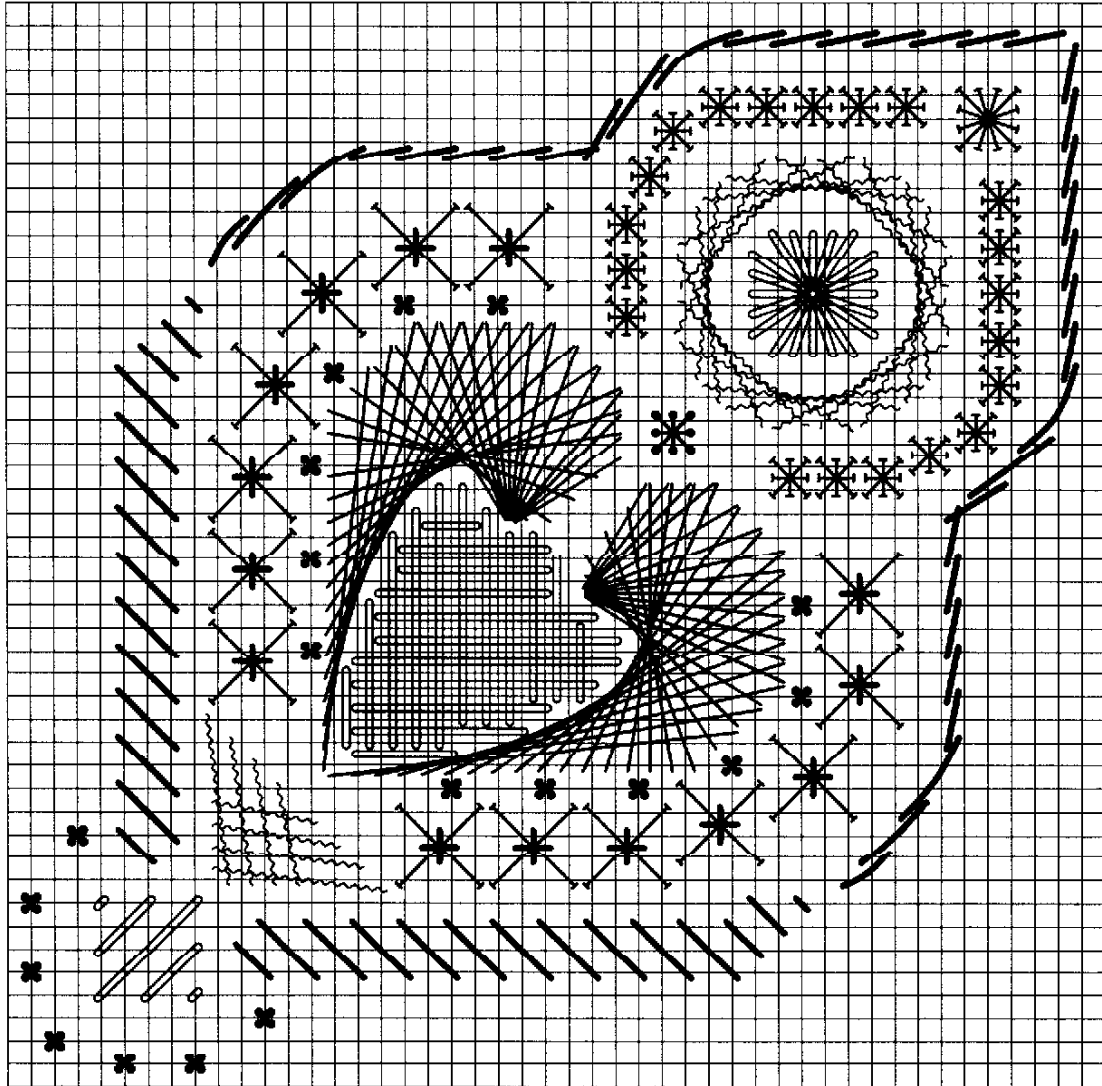


DIAGRAM #2

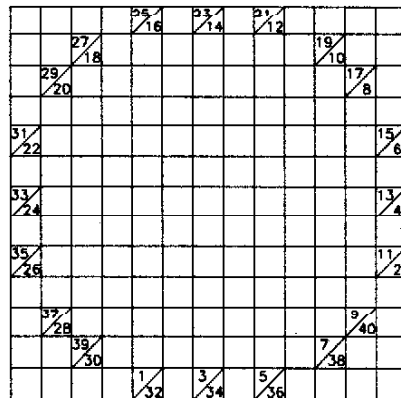


DIAGRAM #3—Jessica

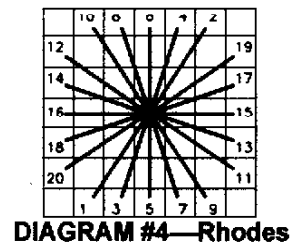


DIAGRAM #4—Rhodes

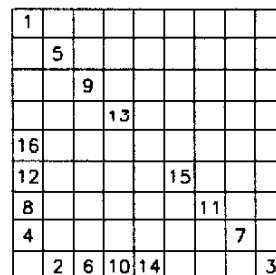

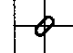
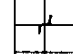





DIAGRAM #5—Sprat's Head

-  F36
-  F10
-  F38
-  F5
-  90B
-  46B