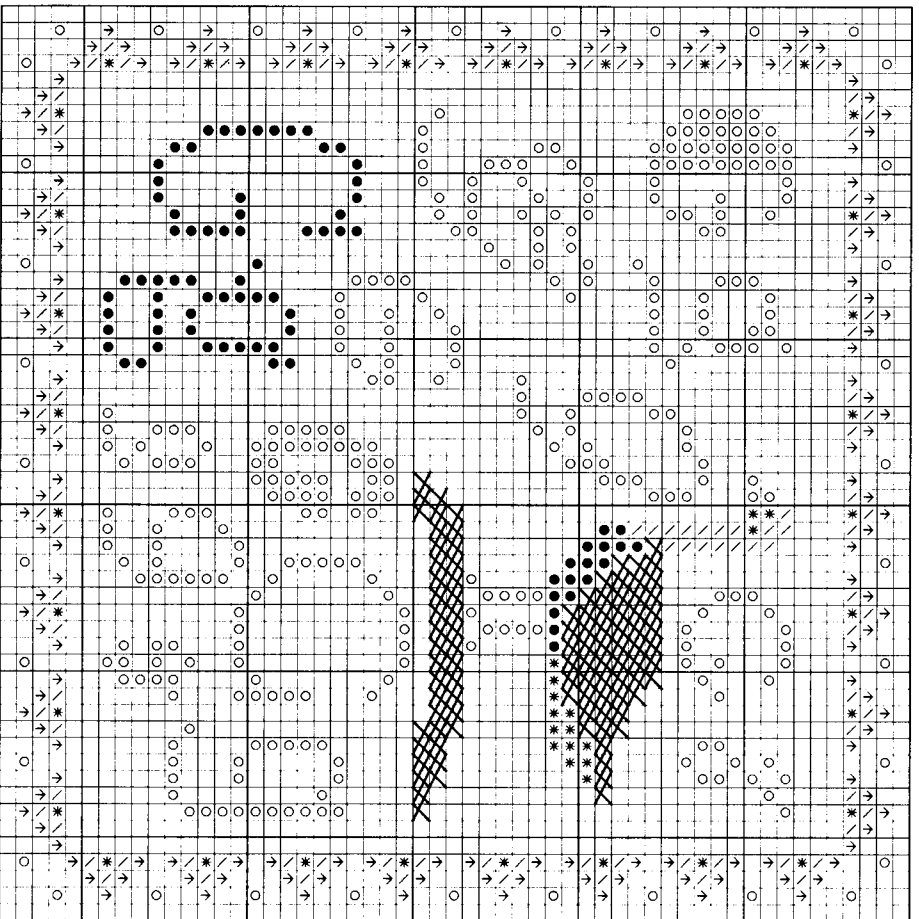


“G” is for Goose & the Greek Stitch

Stitch count: 53h x 53w – approx. 4”h x 4”w stitched over 2 threads on 28ct Clay Cashel linen from Zweigart (#3281-715)



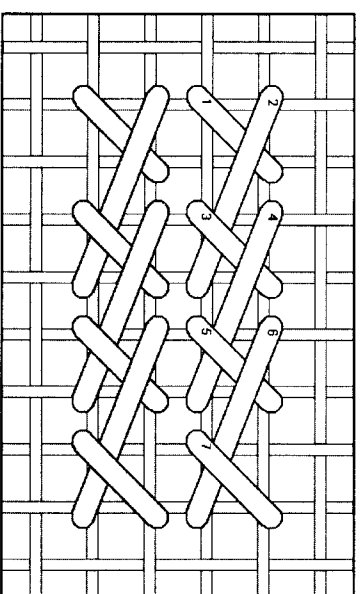
- Rainbow Gallery Fibers - 1 card each**
- \* M803 Mandarin Floss Ecrú – 2 ply
  - M816 Mandarin Floss Lite Cedar – 2 ply
  - † M821 Mandarin Floss Dark Beige – 2 ply
  - ∨ M822 Mandarin Floss Dark Bark – 2 ply
  - S840 Splendor® Camel – 2 ply
  - S1056 Splendor® Wet Sand – 2 ply

After completing all cross stitches, use the Greek stitch to work the back of the goose with 2 ply of Mandarin M821 Dark Beige and the grassy area with 2 ply of Mandarin M816 Lite Cedar.

**Greek Stitch**

This stitch is similar to a long-arm cross stitch and I worked each row from left to right.

**NOTE:** Grid lines in stitch diagram represent one thread of your evenweave or linen fabric. Numbers are shown where your needle comes up from beneath the fabric.



See many more of our designs and learn more about our products at [www.rainbowgallery.com](http://www.rainbowgallery.com)

Model framed by Lynne's Custom Framing, Clarksville TN  
 East Side Mouldings #OCON, [www.eastsidemouldings.com](http://www.eastsidemouldings.com)  
 Individual frame sizes: 5-3/4" square

ERICA MICHAELS  
 NEEDLEART DESIGNS

See more designs at [www.ericamichaels.com](http://www.ericamichaels.com)

Come back for next month's design, and collect the entire alphabet!