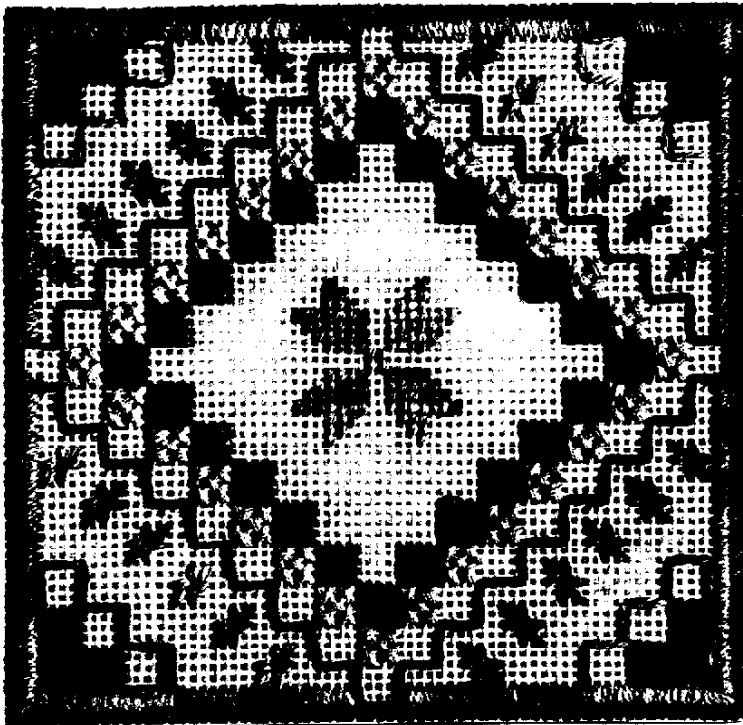


# THE HAPPY GEOMETRIC<sup>©1992</sup>

A Helen Brooks Design for Rainbow Gallery



8" x 8"—#18 white mono canvas  
(Finished size 4" x 4"); Stretcher bars to fit

1 Card each:

Fiesta! F713—Cherry  
Pebble Perle™ P06—Light Blue  
Matte 18 M175—Red  
Encore! E43—Hacienda

OR

Fiesta! F709—Light Pink  
Pebble Perle™ P12—Pink  
Matte 18 M522—Kelly Green  
Encore! E53—Baton Rouge

or pick your own colors

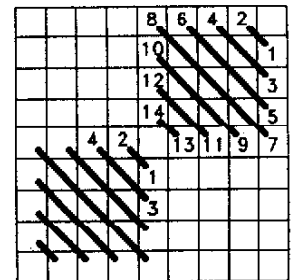
This is an adaptation of an earlier published silk gauze design.

One-quarter of the design is given and there are three different center charts given so that you have a choice—geometric, flower or bird. These center figures should be worked in Tent Stitch with 2 strands of Encore!

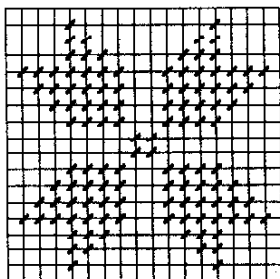
Please note that rows are numbered in the order in which they should be worked, not in the regular sequence that appears when completed.

Find the center of the canvas. From center, count up 25 canvas threads and over 2 to the right to start Cushion Stitch. This is row #1.

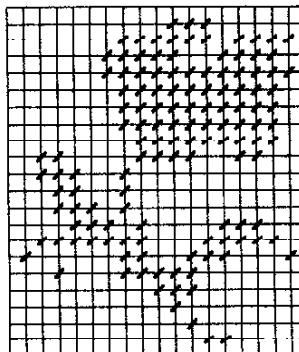
- Row 1 Cushion Stitch in Fiesta! Use all 6 strands. Do not separate before threading needle.
- Row 2 Rice Stitch in Pebble Perle.
- Row 3 Straight Stitch in stair step pattern with Matte 18.
- Row 4 Straight Stitch border over 2 canvas threads with 2 strands Encore!
- Row 5 Corners—Cushion stitch in Fiesta! as is, not separated.
- Row 6 Straight Stitch with Matte 18 in stair step pattern, next to the Cushion stitch.
- Row 7 Diagonal Eyelet with 2 strands of Encore!
- Row 8 Work Tent Stitch in Matte 18 for final border around outside of Straight Stitch border.



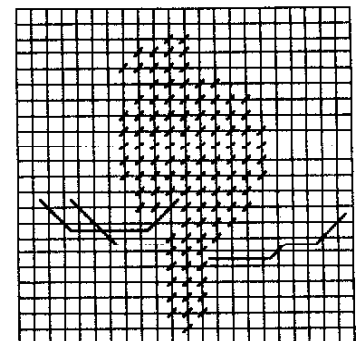
CUSHION STITCH



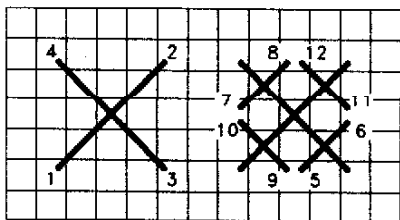
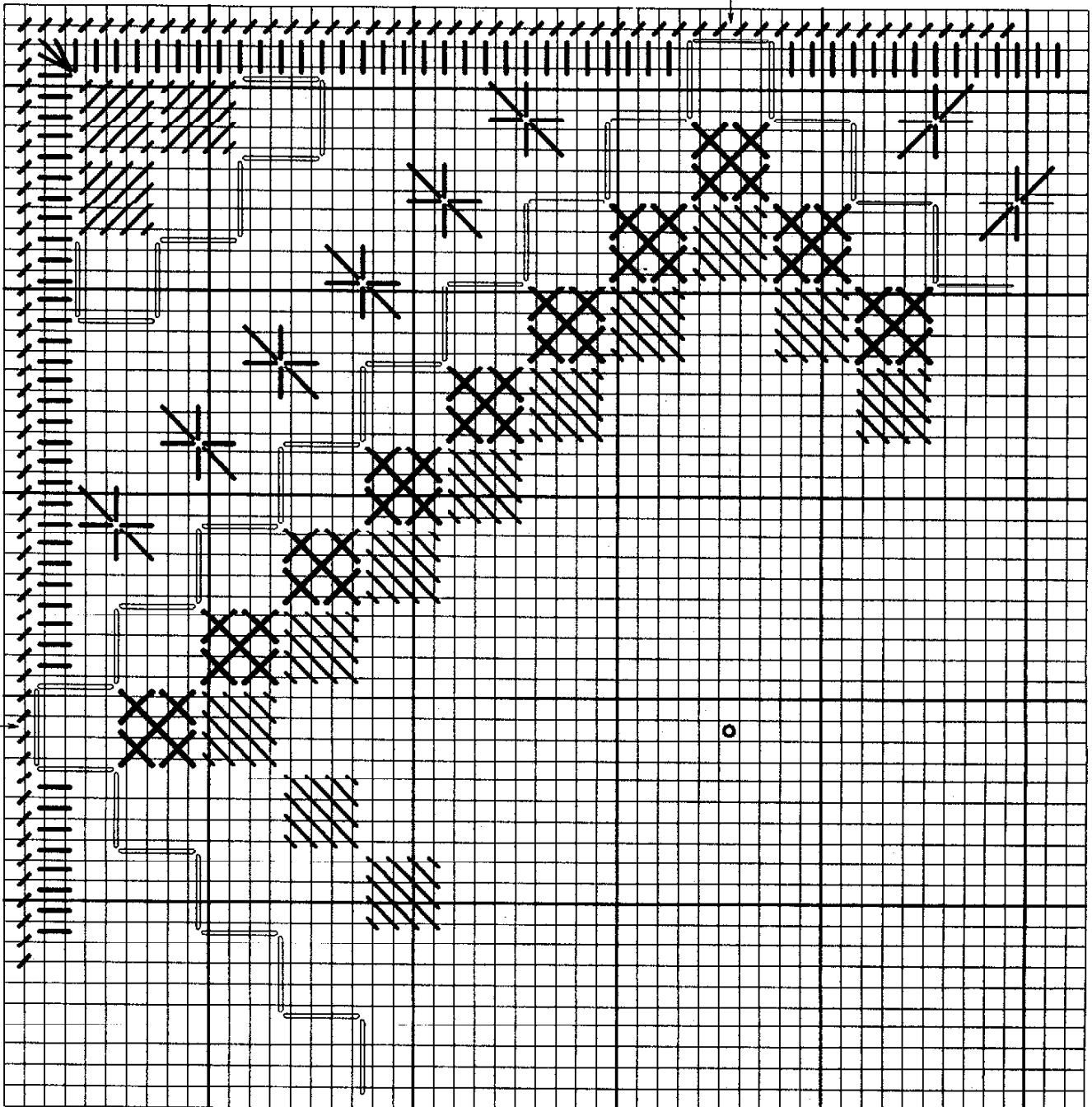
GEOMETRIC



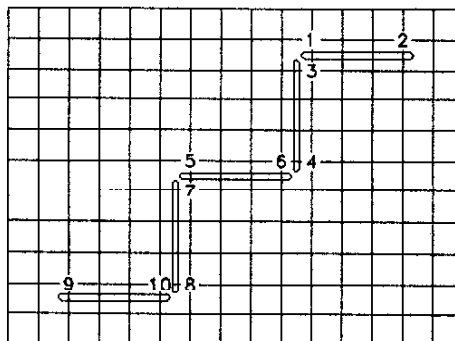
FLOWER



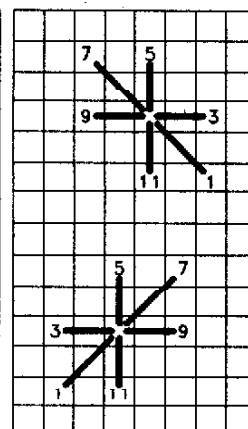
BIRD



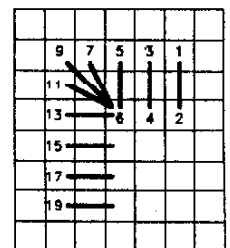
RICE STITCH



STAIR STEP PATTERN



DIAG. EYELET



BORDER

## The Happy Geometric

Permission granted for shop owners and guilds to copy.

©1992 Rainbow Gallery

Production by Lightworks  
(714) 892-9124