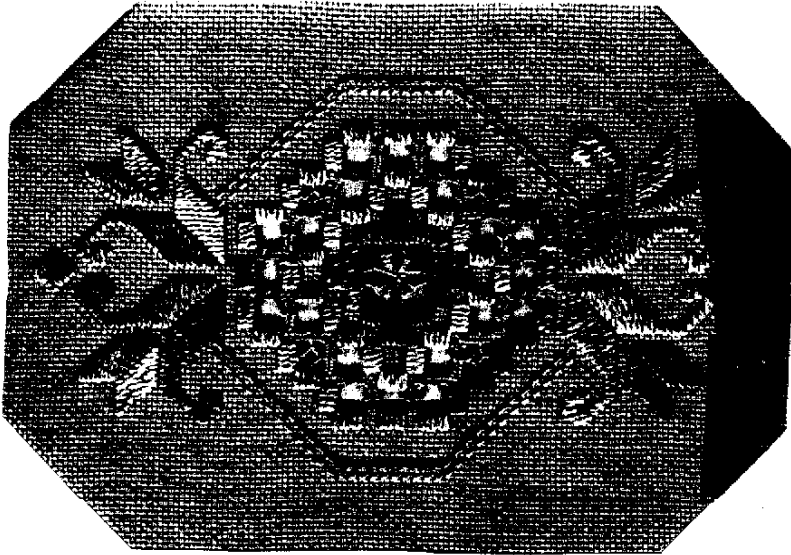


HARDANGER CREST^{©1992}

A Rosalyn Watnemo Design for Rainbow Gallery



MATERIALS:

9" x 12"—Hardanger (22 count—finished size
3 1/4" x 5 3/4") or Oslo (22 count—finished size
3 1/2" x 6 3/4") both by Zweigart

Lining fabric

1 card each Overture™ and Encore!

Suggested Color Combinations

Antique Salmon Hardanger—Overture and Encore!

97 (Nevada)

Antique Light Blue Hardanger—Overture and Encore!

53 (Baton Rouge)

Antique Rose Hardanger—Overture and Encore!

52 (Normandy)

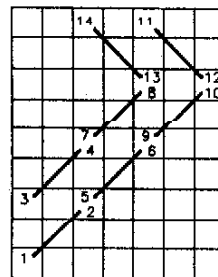
Pearl Gray Oslo—Overture and Encore!

92 (Berkeley)

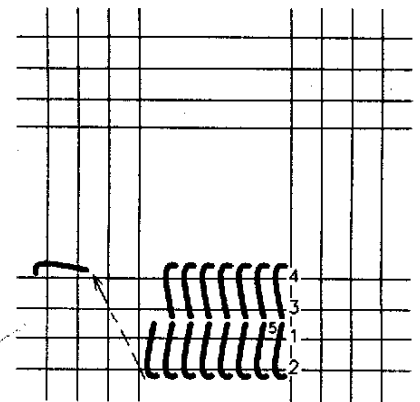
Celadon Oslo—Overture and Encore!

91 (El Paso)

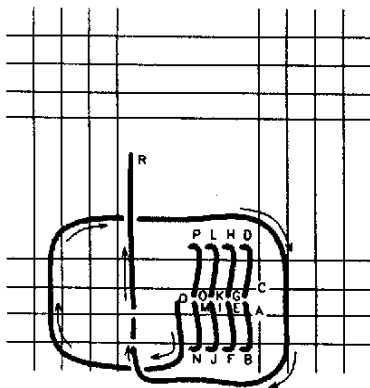
1. Find the center of your fabric.
2. Count 6 threads to the right and 6 threads up to begin the first Satin Stitch (arrow).
3. Work all the Satin Stitch blocks with Overture.
4. Do the Cable Stitch with Encore! (Diagram 1)
5. Cut and remove threads. See master chart and picture.
6. Do the woven bars with Encore! (Diagram 2)
7. Next the picots (Diagram 3), webs (Diagram 4) and adjoining wrap (Diagram 5).



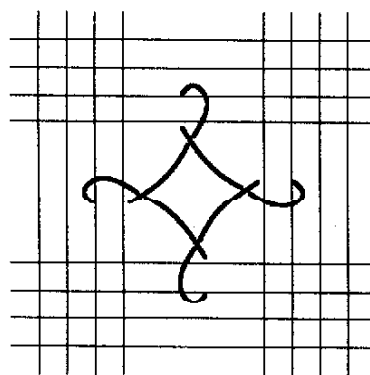
1. Cable Stitch



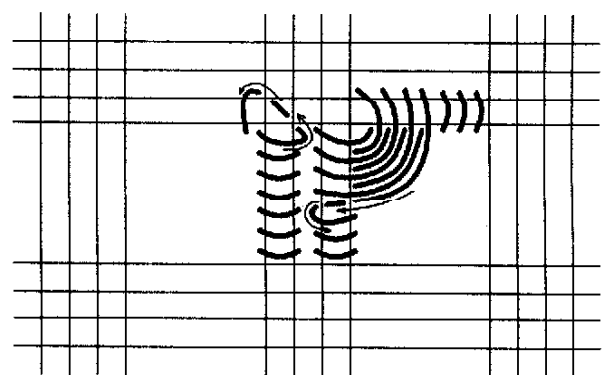
2. Woven Bars



3. Picot

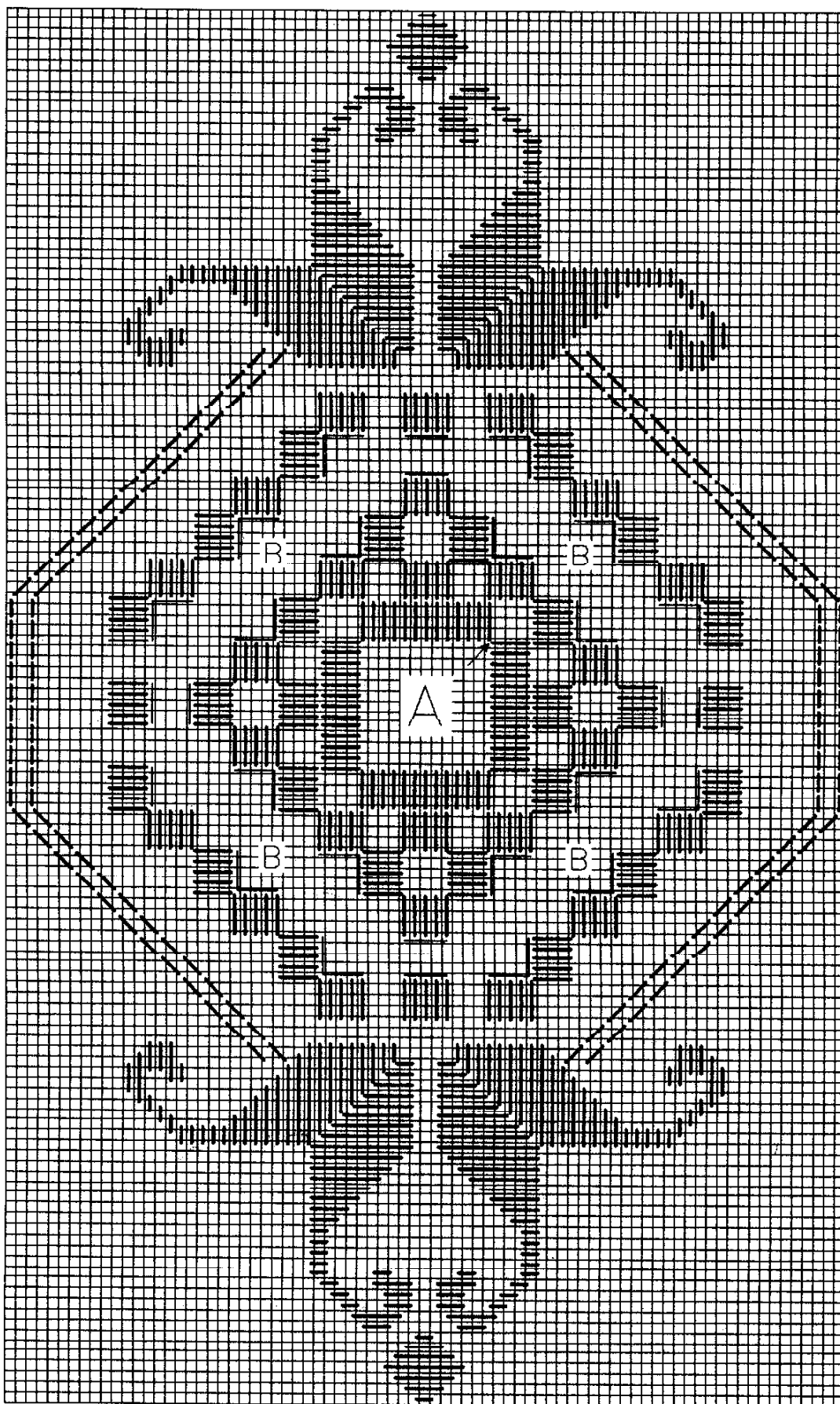


4. Web



5. Adjoining Wrap

MASTER CHART



Permission granted for shop owners and guilds to copy. ©1992 Rainbow Gallery

Production by Lightworks