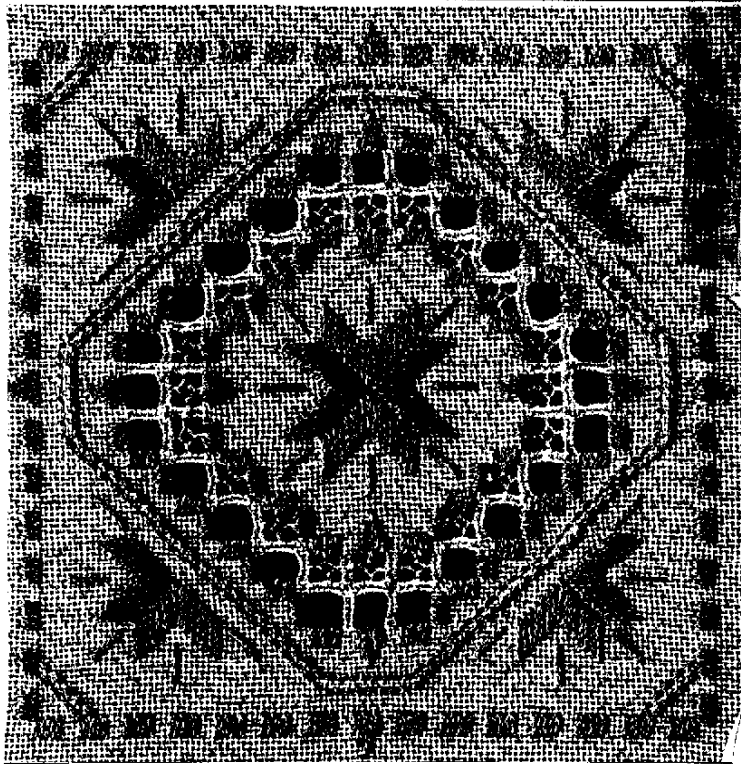


HARDANGER CHRISTMAS STAR^{©1992}

A Rosalyn Watnemo Design for Rainbow Gallery



MATERIALS:

12" x 12" square—Cream and Gold Valerie
(20 count—finished size 6¼" square)
by Zweigart

Lining fabric (burgundy; or your choice)

2 cards—Goldfingering (WG4C—Arctic Gold)
1 card—Gold Dust (GD10C—White Pearl)

Optional Color Combinations

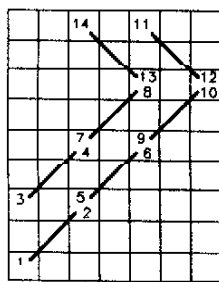
Valerie (White and Silver)—Goldfingering
(WG5C—Silver) and
Gold Dust (GD10C—White Pearl)

Valerie (White and Silver)—Goldfingering
(WG36C—Jet Blue) and
Gold Dust (GD10C—White Pearl)

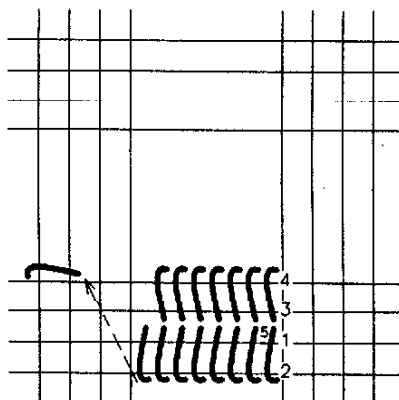
Valerie (White)—Goldfingering
(WG35C—White Gold) and
Gold Dust (GD10C—White Pearl).

1. From the top right corner of the fabric, measure 3" to the left and 3" down to begin the first Satin Stitch using Goldfingering (see arrow).
2. Work all the Satin Stitch blocks, and Satin Stitch stars with Goldfingering.
3. Continue with Cable Stitch, using Goldfingering (Diagram 1).
4. Cut and remove threads (see master chart and picture).
5. Using Gold Dust, weave the bars (Diagram 2) and insert the webs (Diagram 3).

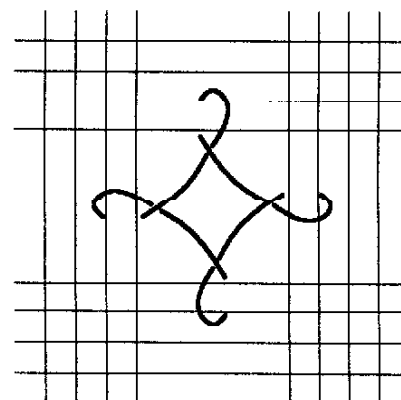
Instructions from the Meler/Watnemo book,
"Beginners Charted Hardanger Embroidery", ©1980.



1. CABLE STITCH

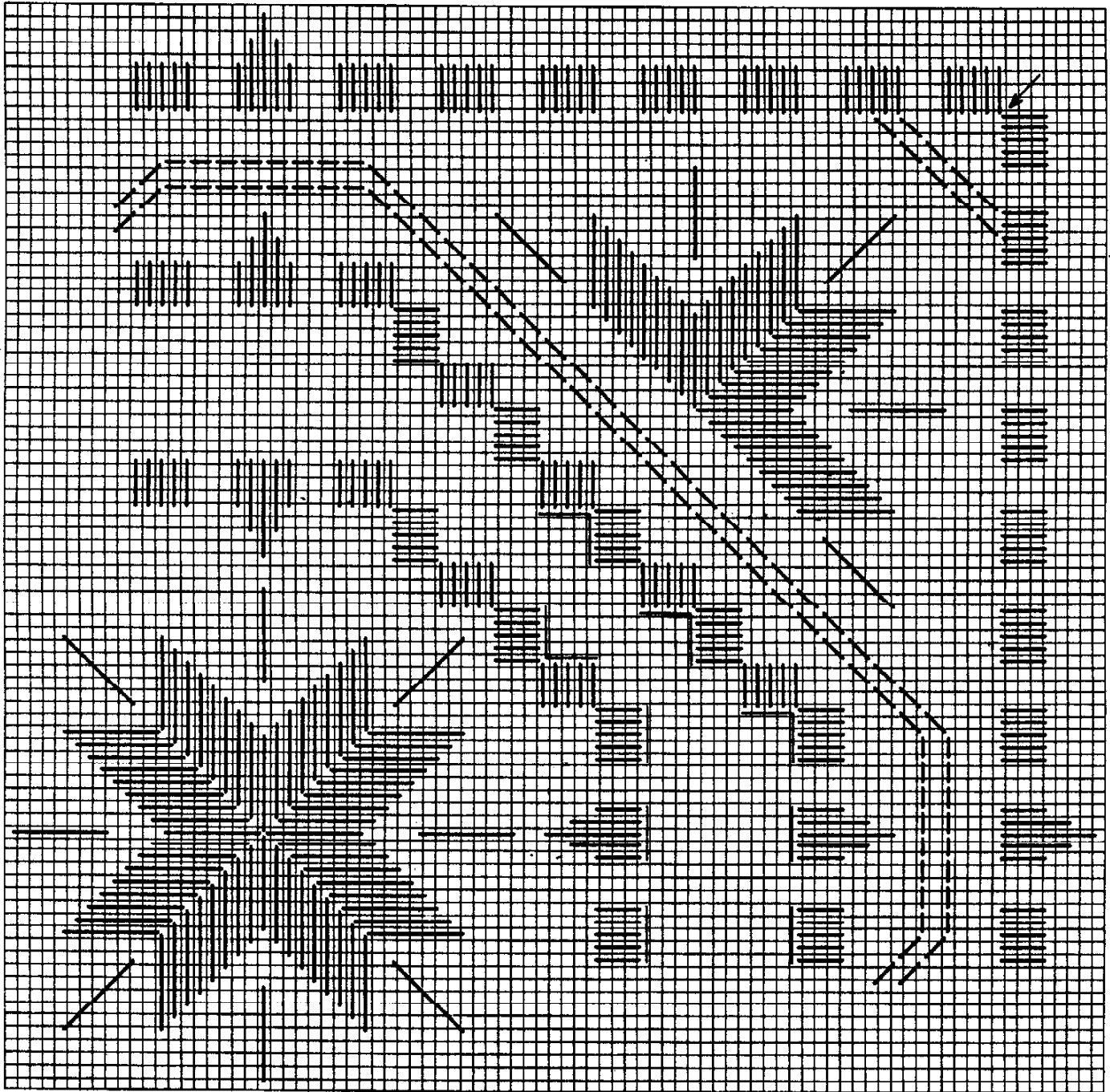


2. WOVEN BARS



3. WEB

MASTER CHART



Permission granted for shop owners and guilds to copy. ©1992 Rainbow Gallery

Production by Lightworks