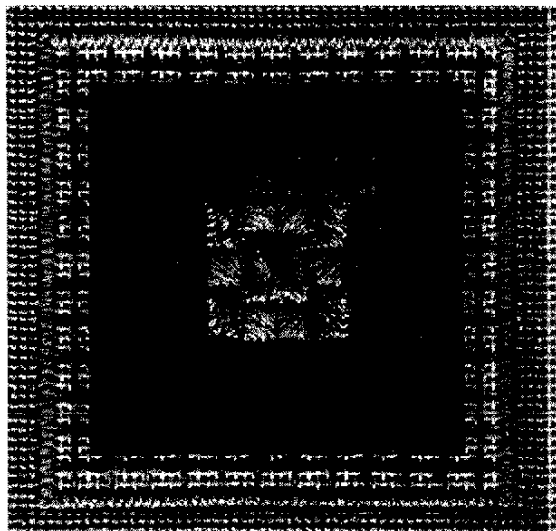


# HOP SCOTCH<sup>©1996</sup>

Number One in a Series

A Marla Pelz Design for Rainbow Gallery



## MATERIALS

9" x 9" #13 Mono Canvas  
Bars to fit; #20 Tapestry Needle

1 card—Fiesta! F708-Pale Pink  
1 card—Splendor® S871-Lite Green Aqua  
1 card—Rainbow Tweed RT52-Cameo  
1 card—Twedie 18 T482-Lagoon

## Alternate Color Scheme

1 card—Fiesta! F720-Dark Green  
1 card—Splendor® S882-Lite Periwinkle  
1 card—Rainbow Tweed RT50-Caravan  
1 card—Twedie 18 T484-Deep Maroon

Finished Size: 4¼" Square

The Master Chart shows the complete design. Start from the center and complete each row before going on to the next. Turn canvas ¼ turn after each row. Refer to Master Chart for placement and diagrams for count.

**Row 1.** Rhodes Mound done in Fiesta! (as is).

**Row 2.** Scotch Stitch variations—Fill in corner Cashmere Stitches with Fiesta!, then stitch inside ones with Splendor (as is).

**Row 3.** Eyelet Stitch done in 2 ply Rainbow Tweed.

**Row 4.** Modified Fern Stitch—Do bottom row in Twedie 18 (as is), then top row in Rainbow Tweed. Fill in corner Smyrna Crosses with Rainbow Tweed.

**Row 5.** Bound Cross Stitch in Twedie 18.

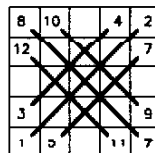
**Row 6.** Upright Cross Stitch in Rainbow Tweed.

**Row 7.** Upright Gobelin Stitch in Splendor, mitering the corners.

**Row 8.** Do 3 rows of Continental with Fiesta!

17	19	21	23	25	27	29	31	2
15								4
13								6
11								8
9								10
7								12
5								14
3								16
1	32	30	28	26	24	22	20	18

**Rhodes Mound**



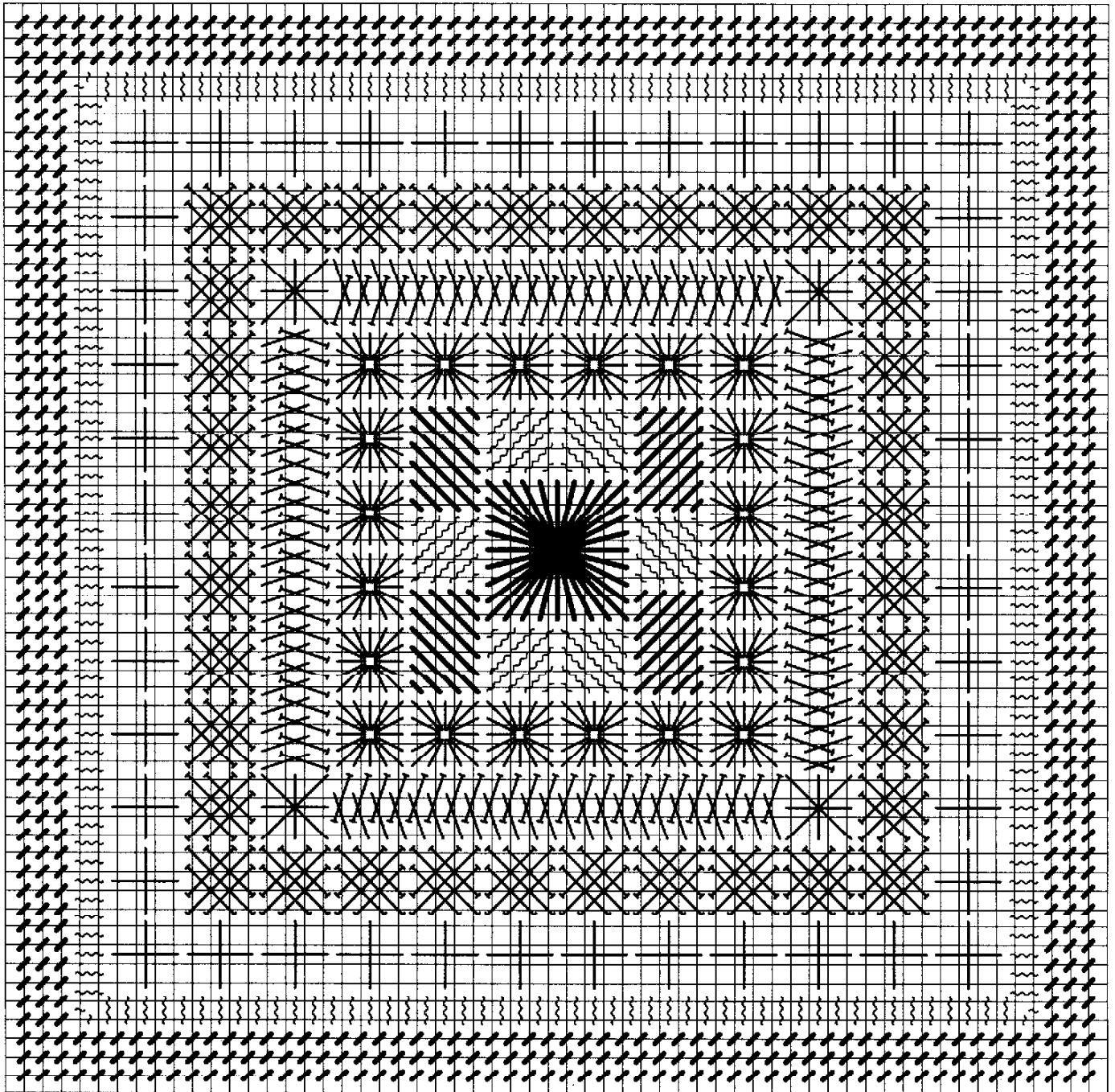
**Bound Cross Stitch**



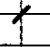

Photocopying of this design is invited.

*Rainbow Gallery*

7412 Fulton Ave., #5, North Hollywood, CA 91605

Production by Lightworks



-  Fiesta! (as is)
-  Splendor (as is)
-  Rainbow Tweed (2 ply)
-  Twedie 18 (as is)