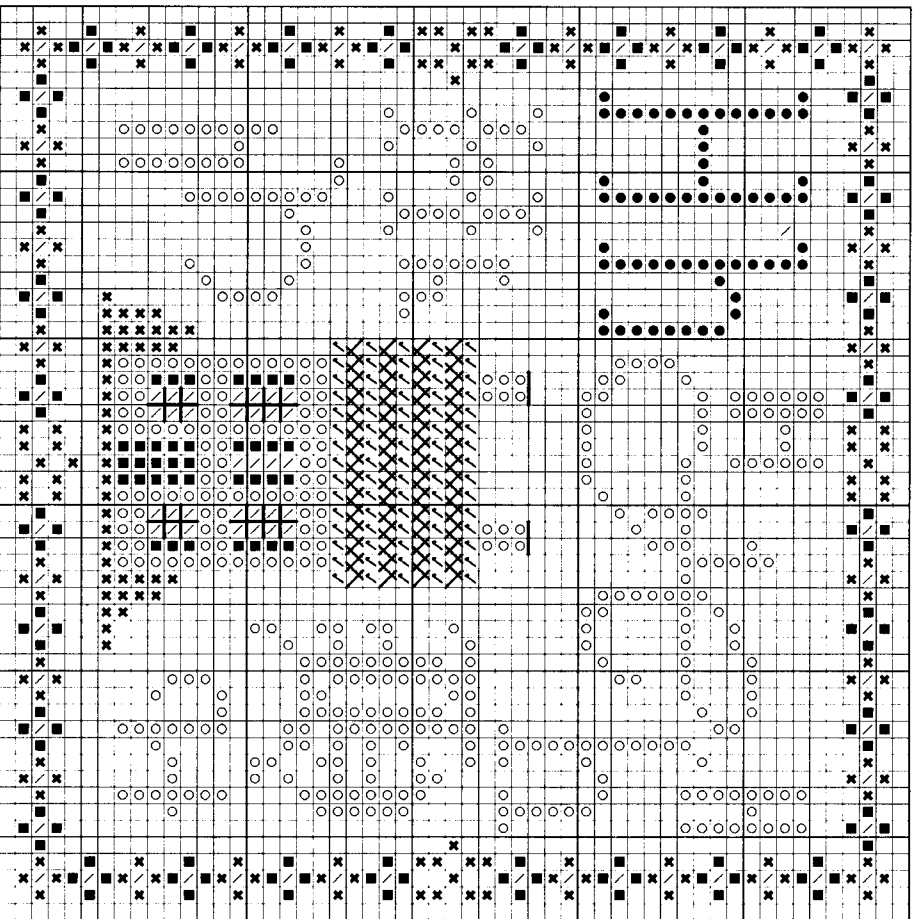


“H” is for House and Home & the Herringbone Stitch

Stitch count: 53h x 53w – approx. 4”h x 4”w stitched over 2 threads on 28ct Clay Cashel linen from Zweigart (#3281-715)

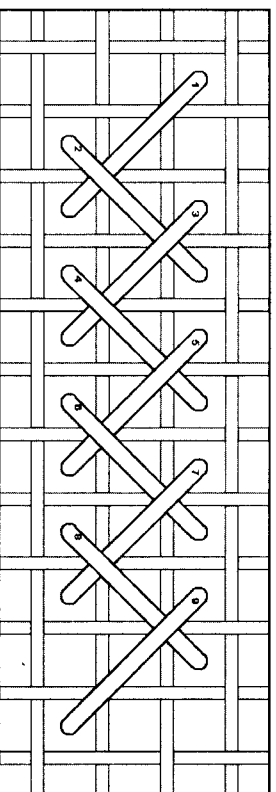


- Rainbow Gallery Fibers - 1 card each**
- ✓ H601 Hi-lights Pale Gold – 1 strand
 - ✓ M819 Mandarin Floss Midnight Green – 2 ply
 - P391 Pebbly Perle® Spice – 1 ply
 - RT13 Rainbow Tweed Terra Cotta – 1 ply
 - S1064 Splendor® Dark Fern Green – 2 ply
 - S1076 Splendor® Dark Blue Violet – 2 ply

After completing all cross stitches, use 1 ply of Midnight Green Mandarin Floss M819 to straight stitch the window details (this is optional – you may or may not prefer the additional detail). Also, with 1 ply of Midnight Green, work the Herringbone stitches in between the rows of cross stitches you've already made for the roof. Backstitch at the top of the chimneys with 2 ply S1076.

Herringbone Stitch

Work this stitch from left to right, and add a small ½ cross stitch to compensate at the ends of a row if you prefer.



NOTE: Grid lines in stitch diagram represent one thread of your evenweave or linen fabric. Numbers are shown where your needle comes up from beneath the fabric.

See many more of our designs and learn more about our products at www.rainbowgallery.com

Model framed by Lynne's Custom Framing, Clarksville TN
 East Side Mouldings #OCON, www.eastsidemouldings.com
 Individual frame sizes: 5-3/4" square

ERICA MICHAELS
 NEEDLEART DESIGNS

See more designs at www.ericamichaels.com

Come back for next month's design, and collect the entire alphabet!