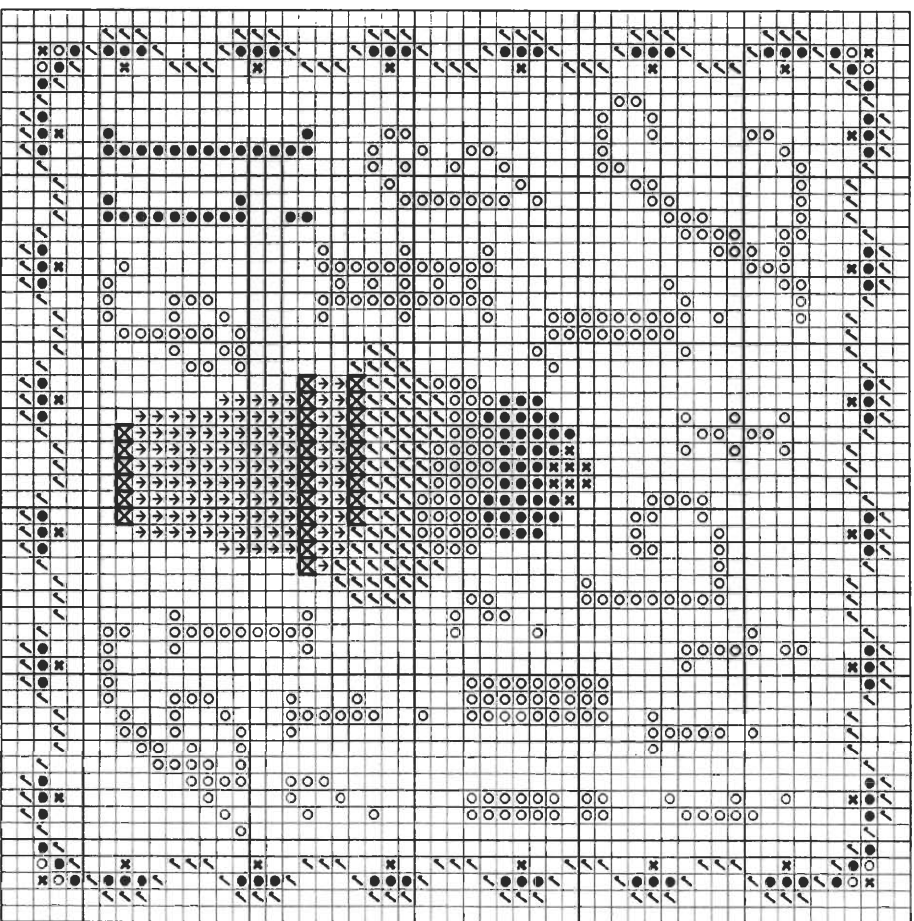


# 2006 CROSS STITCHER'S SURPRISE SERIES from



## “I” is for Ice Cream & the Italian Cross Stitch

Stitch count: 53h x 53w – approx. 4”h x 4”w stitched over 2 threads on 28ct Clay Cashel linen from Zweigart (#3281-715)

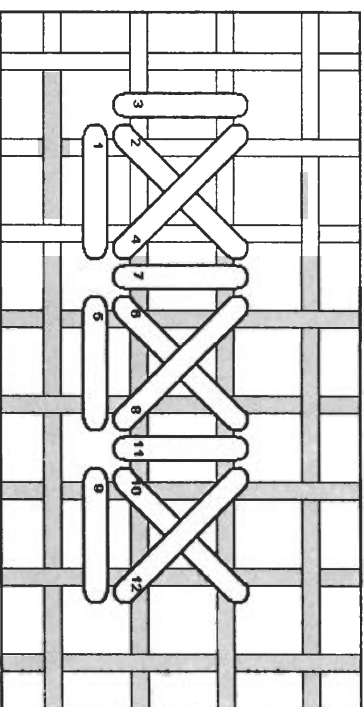


- Rainbow Gallery Fibers - 1 card each**
- E800 Elegance Cool White™ – 1 strand
  - ↳ E901 Elegance™ Pale Golden Brown – 1 strand
  - P40 Pebbly Perle® Copper – 1 ply
  - ✓ S851 Splendor® Brown – 2 ply
  - S1045 Splendor® Lite Antique Rose – 2 ply
  - ✕ PB67 Petite Treasure Braid™ Raspberry – 1 strand

After completing all cross stitches, use 1 ply of Copper Pebbly Perle® P40 to work the Italian cross stitches for the accent areas of the ice cream cone.

### Italian Cross Stitch

This is a 2-sided Italian Cross and is worked from left to right in a row. You make the bottom horizontal stitch first, and then the ½ cross, then the vertical stitch and complete the cross.



**NOTE:** Grid lines in stitch diagram represent one thread of your evenweave or linen fabric. Numbers are shown where your needle comes up from beneath the fabric.

See many more of our designs and learn more about our products at [www.rainbowgallery.com](http://www.rainbowgallery.com)

Model framed by Lynne's Custom Framing, Clarksville TN  
 East Side Mouldings #OCON, [www.eastsidemouldings.com](http://www.eastsidemouldings.com)  
 Individual frame sizes: 5-3/4" square

**ERICA MICHAELS**  
 NEEDLEART DESIGNS

See more designs at [www.ericamichaels.com](http://www.ericamichaels.com)

Come back for next month's design, and collect the entire alphabet!