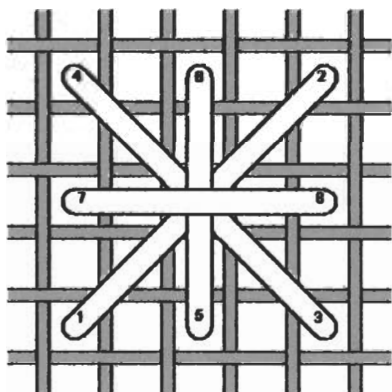


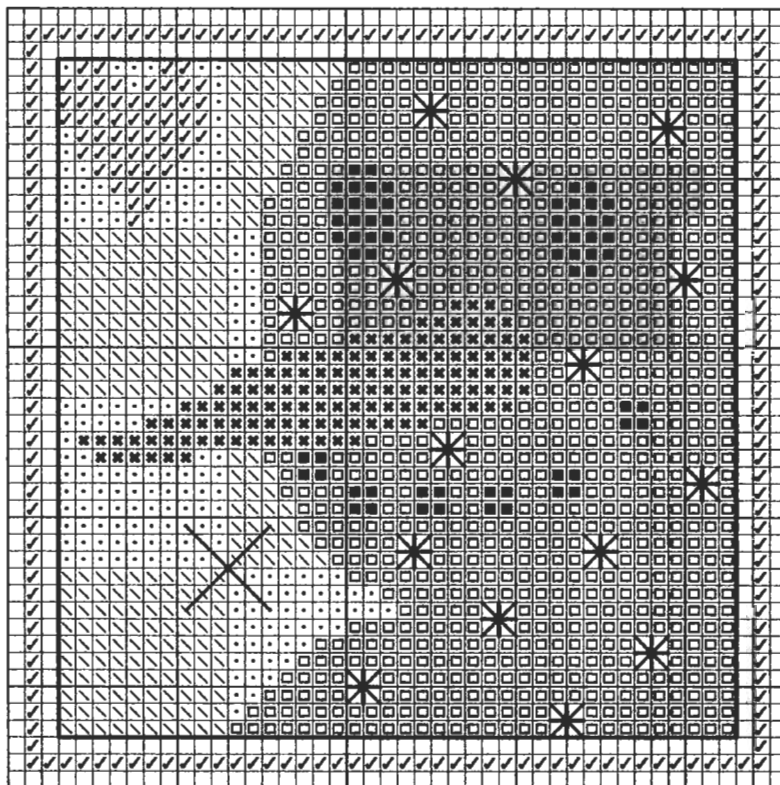
2005 Cross Stitcher's Surprise Series from *Rainbow Gallery*

JANUARY - SNOWMAN

Stitch count: 44h x 44w – approx. 3”h x 3”w ♥ 28ct Wheaten Country French linen from Wichelt (#86-267) stitched over two or 14ct Wheaten Country French Soft Touch Aida (#367-267)



Smyrna Cross



Rainbow Gallery Fibers - 1 card each

- CR01 Crystal Braid White Pearl – 1 strand
- FT11 Soft Sheen Fyre Werks® Black – 1 strand
- ✱ FT3 Soft Sheen Fyre Werks® Pumpkin – 1 strand
- ✓ H629 Hi-Lights Yellow Gold – 1 strand
- P02 Pebbly Perle® White – 1 ply
- S801 Splendor® Black – 2 ply
- ∖ S882 Splendor® Lite Periwinkle – 2 ply
- S864 Splendor® Dark Periwinkle – 2 ply

After completing all cross stitches, back stitch with 2 ply Black Splendor® around the edge of the main design area as indicated by the solid line on the chart. Use 1 strand White Pearl Crystal Braid to make large Smyrna crosses over 4 threads or 4 squares (see the stitch diagram) where indicated on the chart in the snowman. Attach the snowflake charm at the large “x” with the Yellow Hi-Lights. (*charm #80155BR from By Jupiter!*)

Go to www.ericamichaels.com for

ERICA MICHAELS
DESIGNS FOR COUNTED CROSS STITCH

more designs by Linda Stolz

See many more of our designs and learn more about our products at www.rainbowgallery.com

Model framed by Homespun Corner, Clarksville TN with Wood 'N Needle Crafts #FF K LL (Black)

Come back for next month's design!