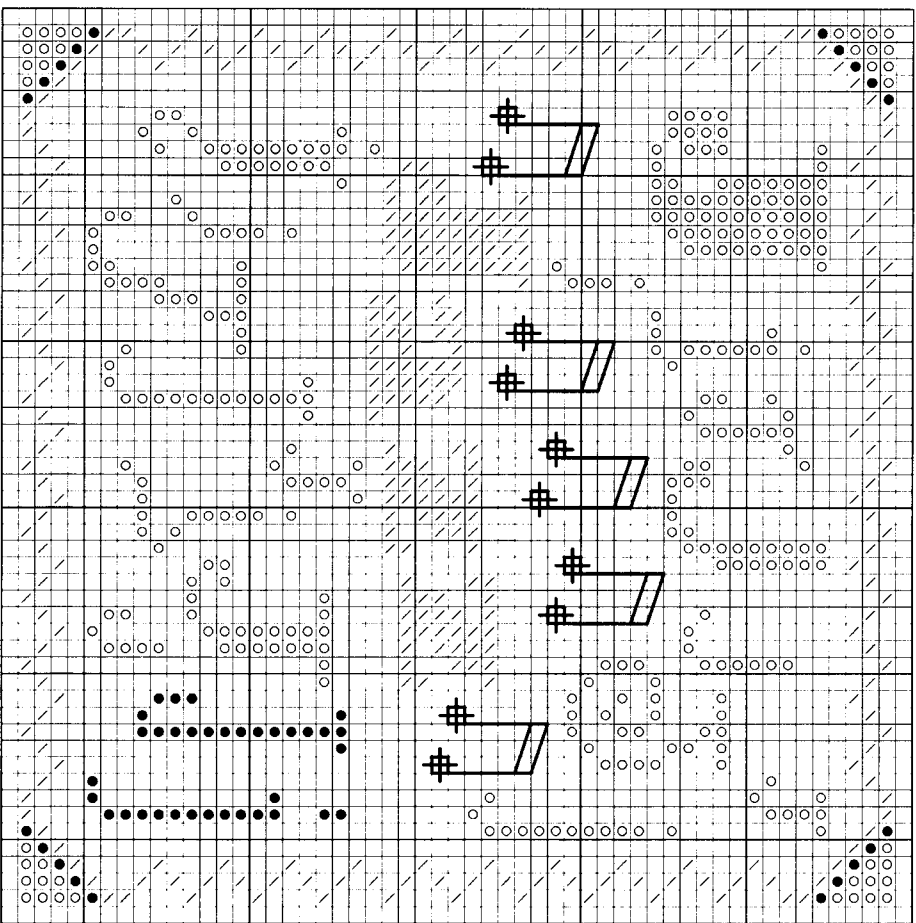


“J” is for Jazz & the Jerusalem Cross Stitch

Stitch count: 53h x 53w – approx. 4”h x 4”w stitched over 2 threads on 28ct Clay Cashel linen from Zweigart (#3281-715)



Rainbow Gallery Fibers - 1 card each

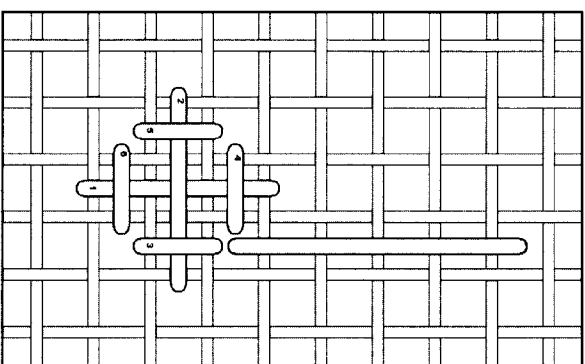
- S801 Splendor® Black – 2 ply
- PB55 Petite Treasure Braid™ Brass – 1 strand
- ∨ PB63 Petite Treasure Braid™ Deep Midnight Blue – 1 strand

After completing all cross stitches, use 1 strand of Brass Petite Treasure Braid PB55 for straight stitches and Jerusalem cross stitches to create the musical notes.

Jerusalem Cross Stitch

The first part of the stitch is a large upright cross, and then each leg is crossed again. The long gray line in the diagram illustrates the relationship between the Jerusalem cross stitches and the long vertical straight stitches of the musical notes.

NOTE: Grid lines in stitch diagram represent one thread of your evenweave or linen fabric. Numbers are shown where your needle comes up from beneath the fabric.



See many more of our designs and learn more about our products at www.rainbowgallery.com

Model framed by Lynne's Custom Framing, Clarksville TN
 East Side Mouldings #OCON, www.eastsidemouldings.com
 Individual frame sizes: 5-3/4" square

ERICA MICHAELS
 NEEDLEART DESIGNS

See more designs at www.ericamichaels.com

Come back for next month's design, and collect the entire alphabet!