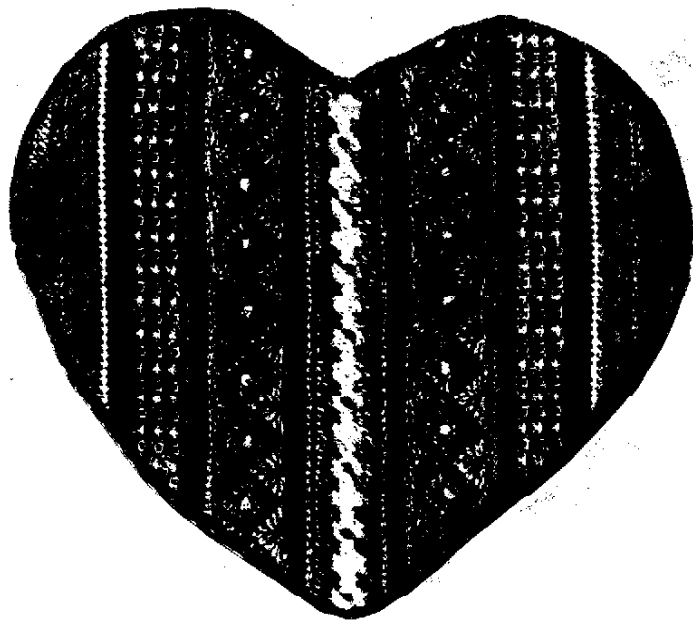


JEWELLED VALENTINE^{©1992}

A Cathy Slaton Design for Rainbow Gallery



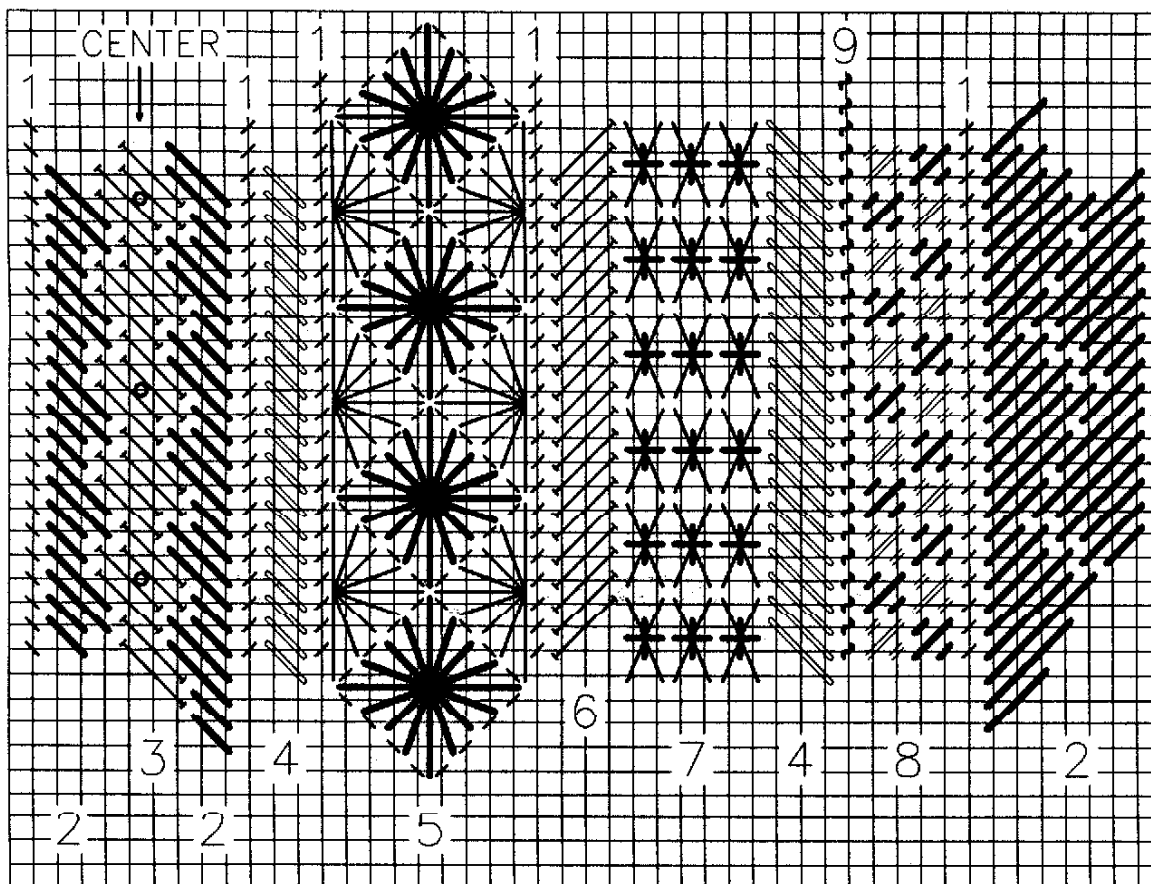
MATERIALS:

9" x 9"—# 14 Mono Canvas; Bars to fit

1 card each—Overture™ V56 & V57, Flair F502,
Neon Rays™ N20 & N09, Fyre Werks™ F38,
Cresta d'Oro™ C25 & C60,
Pebbly Perle™ P61

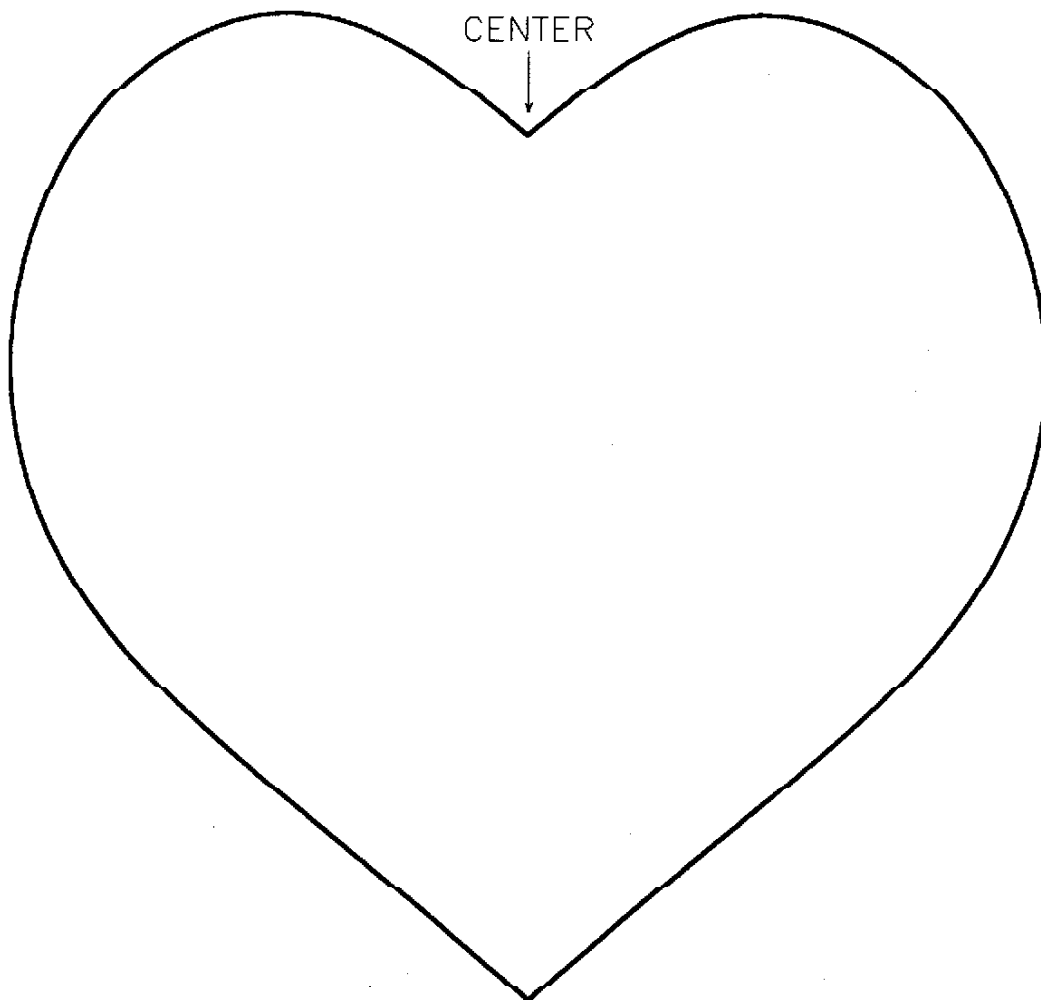
Heart can also be made with all red and white
fibers from Rainbow Gallery.

- The different symbols on the chart are meant to show fiber changes only.
- Outline heart shape on canvas from template on back page.
- Use parts of Overture V57 and V56. Do not use the turquoise, yellow, green and orange. Cut these out.
- Mirror chart to the left of the center motif.



AREA

1. Overture V57 (Red Heart)
2. Overture V56 (Macaw)
3. Cresta d'Oro C60 (White Pearl) with circles showing French Knots in C25 (Violet).
4. Neon Rays N09 (Purple)
5. Half Eyelets are Overture V57, full Eyelets are Overture V56 with French Knots in the center in Cresta d'Oro C60. Outline around full Eyelets with Cresta d'Oro C25.
6. Neon Rays N20 (Red)
7. Long crosses are Overture V56, upright crosses are Cresta d'Oro C60.
8. Double lines are Pebbly Perle P61 (Orchid), heavy lines are Fyre Werks F38 (Red).
9. Flair F502 (White)



FINISHING—Cut heart shape out of cardboard, fleece and velvet. Snip and fold velvet around cardboard. Glue in place. Lay fleece on top of cardboard. Then lay needlepoint on top and hand stitch in place folding under to match shape of heart. Twist favorite threads to make braid. Hand sew in place around edge. Make tassel and attach to bottom of heart. Add loop of braid at top for hanger.

Permission granted for shop owners and guilds to copy. ©1992 Rainbow Gallery