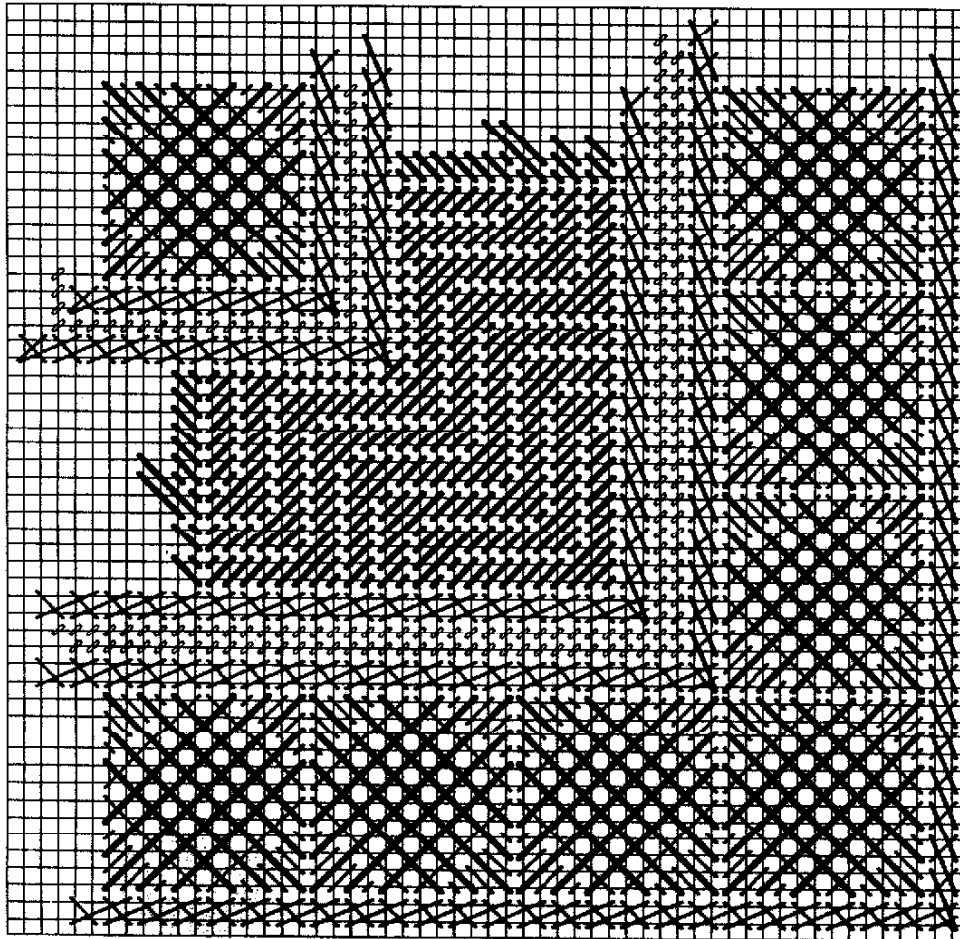


# KALEIDOSCOPE ©1990

A Sandi Ragan Design for Rainbow Gallery



9" x 9" — #18 Mono Canvas  
 (Finished size — 5" x 5")  
 1 Card Overture™  
 2 Cards Neon Rays™  
 1 Card Lystwist, Pebbly Perle™  
 or Patina

**Suggested Color Schemes:**

Overture™ — V93 Normandy  
 Neon Rays™ — N69 Denim  
 Lystwist — L17 Rose Pink or  
 Patina — PA28 Mauve

Overture™ — V84 Stone Grays  
 Neon Rays™ — N07 Dark Teal  
 Lystwist — L03 Gray or  
 Patina — PA03 Silver

Overture™ — V57 Red Heart  
 Neon Rays™ — N83 Tangerine  
 or N14 Hot Pink  
 Lystwist — L15 Red or  
 Patina — PA09 Red

Overture™ — V63 Forest  
 Neon Rays™ — N32  
 Spruce Green  
 Pebbly Perle™ — P27  
 Pale Green or  
 Lystwist — L08 Gold

Or pick your own. . . .

Use #22 needle for Neon Rays and #24 for remaining fibers.

This design is worked from the center block out, stitching each row completely around. The wide section of Oriental stitch (#5) is the only portion that is mitered.



1. Center is one block of crossed, woven stitch worked over 12 threads in 1 ply Overture (heavy lines) and 1 ply Neon Rays (lighter lines).
2. One row of Long Arm Cross (over 2 threads) using 1 ply Neon Rays. Work this row completely around the center block.
3. One row of Continental in 1 ply of Lystwist, Patina or Pebbly Perle (ovals on chart). DO NOT CHANGE DIRECTION of Continental stitches as you continue around.
4. One row of Long Arm Cross as in #2.
5. Oriental stitch in 1 ply Overture, mitering at the center of each side. This area covers 13 threads.

# KALEIDOSCOPE ©1990

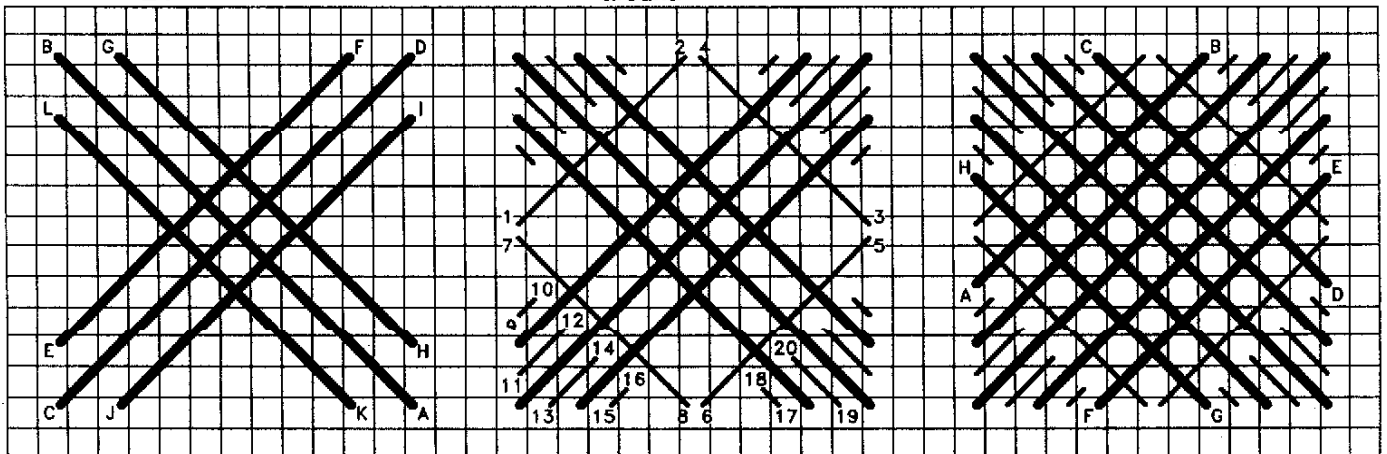
6. Border of Center Blocks (see #1) stitched around in 1 ply Overture and 1 ply Neon Rays. See main chart for placement.
7. One row of Long Arm Cross as in #2.
8. Two rows of Basketweave or Continental as in #3.
9. One row of Long Arm Cross as in #2.

## 1. Crossed Woven Stitch—Overture (heavy lines on chart); Neon Rays (lighter lines on chart).

STEP 1—Overture; slp K-L under E-F

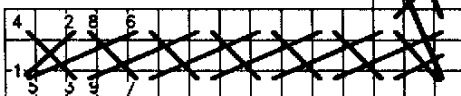
STEP 2—Neon Rays; work all around

STEP 3—Overture; slp G-H under A-B

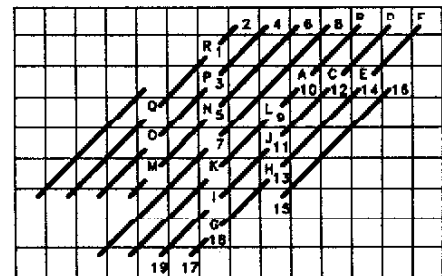


## 2, 4, 7 and 9. Long Arm Cross

Neon Rays — Note corner compensation. This stitch is worked continuously around square.



## 5. Oriental Stitch—Overture



Permission granted for shop owners and guilds to copy.  
©1990 Rainbow Gallery

Production by Lightworks  
(714) 892-9124