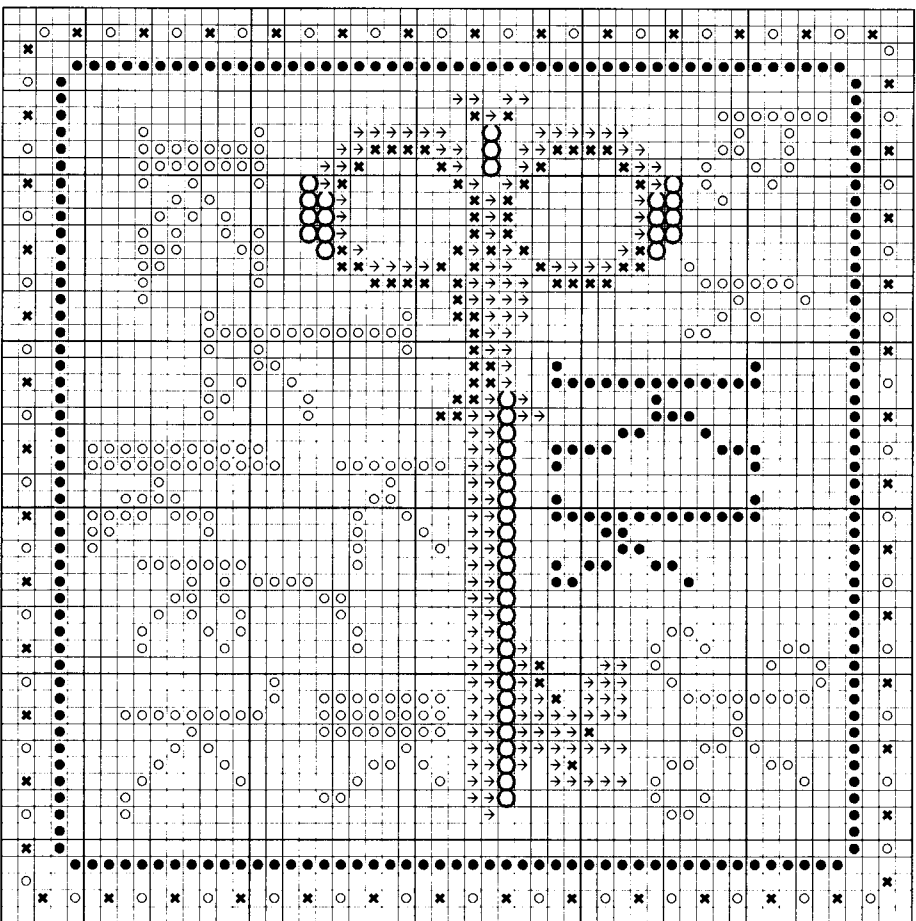


“K” is for Key & the Kensington Stitch

Stitch count: 53h x 53w – approx. 4”h x 4”w stitched over 2 threads on 28ct Clay Cashel linen from Zweigart (#3281-715)



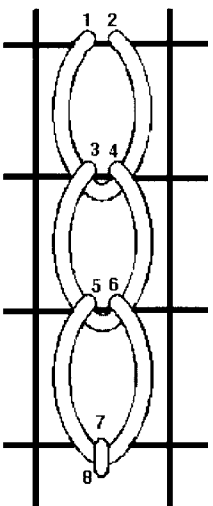
- Rainbow Gallery Fibers - 1 card each**
- E836 Elegance™ Dark Forest Green – 1 strand
 - H617 Hi-lights Midnight Blue – 1 strand
 - ↑ S1048 Splendor® Lite Brass – 2 ply
 - * S1049 Splendor® Brass – 2 ply

Complete cross stitches. The large open circles on the key represent the Kensington chain stitches – work these with 2 ply of Brass Splendor® S1048 for the areas indicated. You may also make small single Kensington chain stitches for the individual stitches in the border indicated by the * symbol for added texture.

Kensington Stitch (also called the Chain Stitch)

Work these over 2 threads (or 4 if you like that better). You can work in any direction you prefer, but don't pull it too tightly so it keeps a more curved shape.

NOTE: Grid lines in stitch diagram represent one thread of your evenweave or linen fabric. This diagram is different! Odd numbers are shown where your needle comes up from beneath the fabric, and even numbers show where you go back down into the fabric.



See many more of our designs and learn more about our products at www.rainbowgallery.com

ERICA MICHAELS
NEEDLEART DESIGNS

See more designs at www.ericamichaels.com

Model framed by Lynne's Custom Framing, Clarksville TN
#OCON from East Side Mouldings - www.eastsidemouldings.com.
Individual frame sizes: 4-3/4" square

Come back for next month's design, and collect the entire alphabet!

© 2006 RAINBOW GALLERY Permission to photocopy for free distribution.