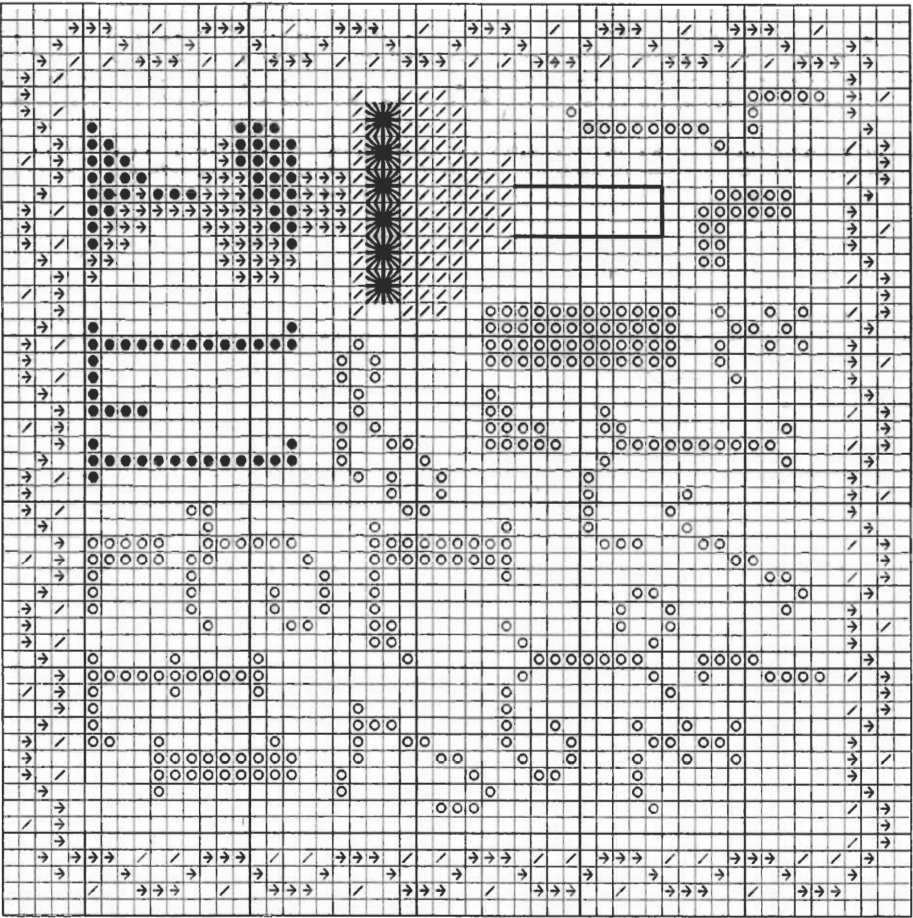


"L" is for Lamp & the Leviathan Stitch

Stitch count: 53h x 53w – approx. 4" h x 4" w stitched over 2 threads on 28ct Clay Cashel linen from Zweigart (#3281-715)



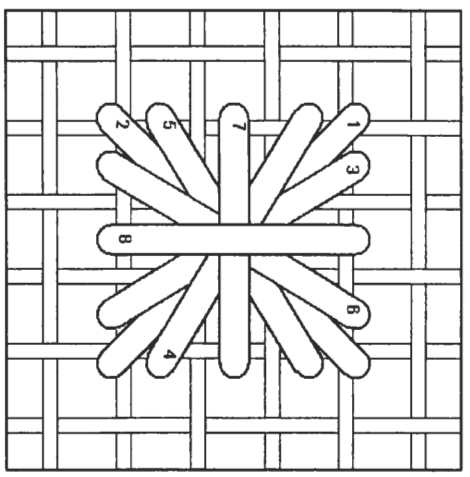
- Rainbow Gallery Fibers - 1 card each**
- ↖ H607 Hi-lights Gray – 1 strand
 - M827 Mandarin Floss Lite Antique Blue – 2 ply
 - ↘ S800 Splendor® Cool White – 2 ply
 - S1072 Splendor® Rain Gray – 2 ply

Complete cross stitches. Backstitch the lamp's chimney with 1 ply of S800 Cool White Splendor® and work the Leviathan stitches using 2 ply of the Cool White Splendor® per the diagram below.

Leviathan Stitch

Start with the large cross over 4 threads, and build up following the numbers – the top "layer" is the large upright cross.

NOTE: Grid lines in stitch diagram represent one thread of your evenweave or linen fabric. Numbers are shown where your needle comes up from beneath the fabric.



See many more of our designs and learn more about our products at www.rainbowgallery.com

Model framed by Lynne's Custom Framing, Clarksville TN
 East Side Mouldings #OCON, www.eastsidemouldings.com
 Individual frame sizes: 5-3/4" square