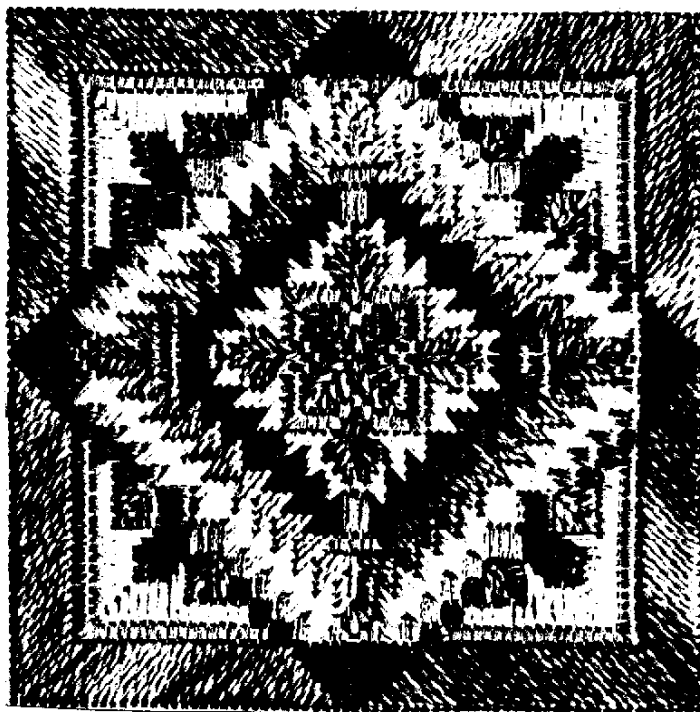


LEAF QUILT BLOCK^{©1991}

Number One In a Series by Marie Ary for Rainbow Gallery



9" x 9"—#18 White Mono Canvas
(Finished size 4" x 4")

- 1 Card Overture™ V52—Normandy
- 1 Card Neon Rays™ N91—Silver
- 1 Card Pebbly Perle™ P02—White
- 1 Card Pebbly Perle™ P10—Mauve

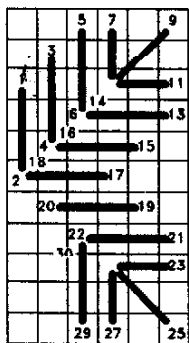
Alternate Color Schemes:

- 1 Card Overture™ V75—Dried Flowers
- 1 Card Neon Rays™ N29—Burgundy
- 1 Card Pebbly Perle™ P02—White
- 1 Card Pebbly Perle™ P27—Pale Green
- 1 Card Overture™ V33—Brandywine
- 1 Card Neon Rays™ N03—Pale Beige
- 1 Card Pebbly Perle™ P02—White
- 1 Card Pebbly Perle™ P09—Dark Blue

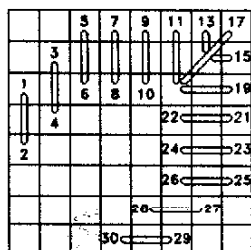
Or pick your own.

Start with center block. Work completely around and out. **All Overture is one ply.** See master chart on back page.

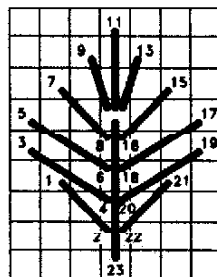
1. Center leaf stitches are in Overture.
2. Work Upright Gobelin over two threads in Neon Rays to border the center.
3. Fill in the indents with Leaf Stitch Variation in Overture.
4. Diagonal Stitch a filler border with white Pebbly Perle.
5. Next, work a row of Milanese Stitch in the darker Pebbly Perle. When the stitch hits the diagonal center it flips until it meets the horizontal center.
6. Start with a leaf style stitch in Overture and work into a Milanese Stitch. This also flips at the diagonal center.



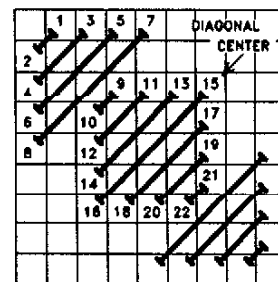
CENTER MOTIF



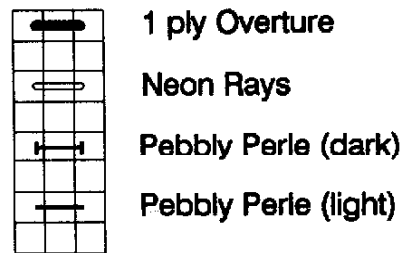
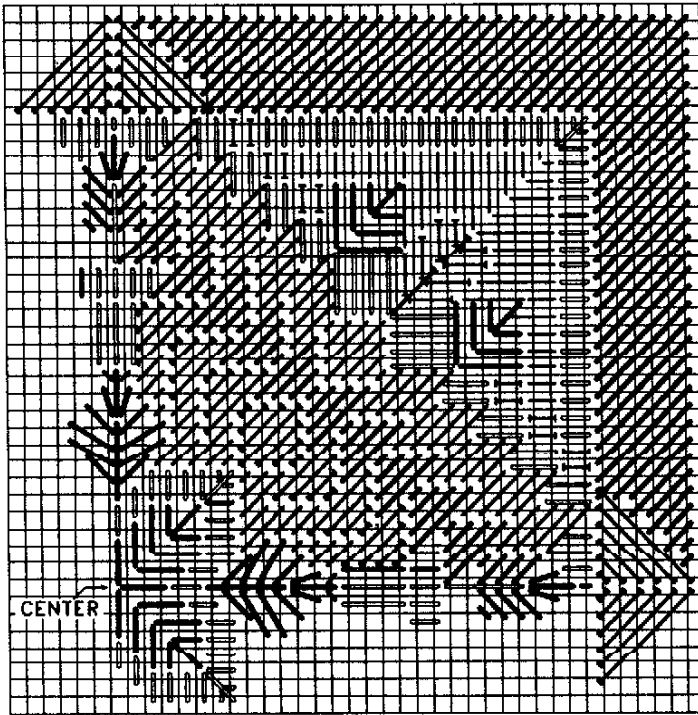
UPRIGHT GOBELIN
NEON RAYS



LEAF VARIATION
STITCH

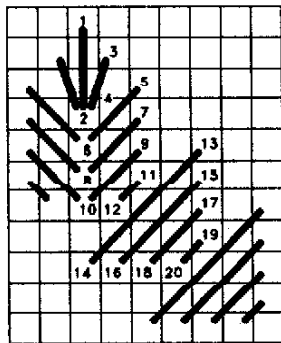


MILANESE STITCH

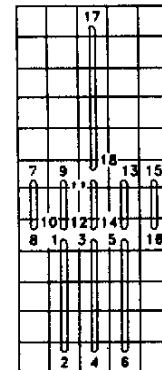


7. Do a filler border in white Pebbly Perle.
8. Work Upright Gobelins in Neon Rays above the Leaf style stitch, then down the filler border as shown. This also flips.
9. Next, stitch three sets of Upright Gobelins in the darker Pebbly Perle with a Leaf stitch at the diagonal center, working back into Upright Gobelins and ending in diagonal stitches.

10. Follow with two Leaf stitches in Overture, next to the Pebbly Perle Leaf stitches.
11. Straight stitch a filler background in white Pebbly Perle.
12. Stitch inner border with Neon Rays in Upright Gobelins.
13. Stitch outer border with Overture in diagonal stitches and darker Pebbly Perle (center of sides) where shown on chart



**LEAF STYLE STITCH INTO
MILANESE STITCH—OVERTURE**



**UPRIGHT GOBELIN
NEON RAYS**

Permission granted for shop owners and guilds to copy. ©1991 Rainbow Gallery