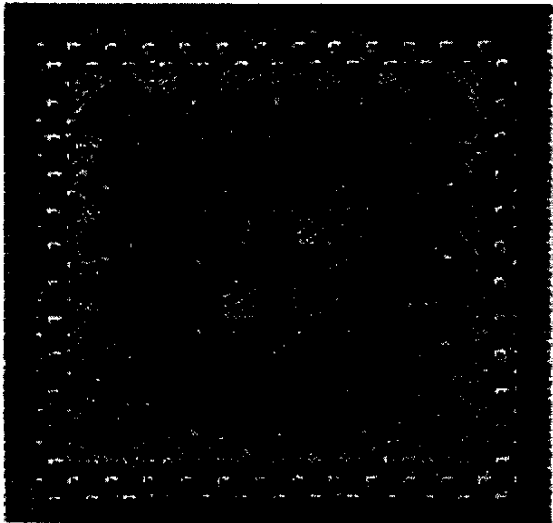


LEATHER and LATTICE^{©1998}

Number Three in a Series

A Marla Pelz Design for Rainbow Gallery



Finished Size: 4½" Square

MATERIALS

9" x 9" #13 Mono Canvas (White)
Bars to fit; #20 Tapestry Needle

1 card—Bravo![®] A71-Navys
1 card—Pebbly Perle[®] P061-Pale Sky Blue
1 card—Frosty Rays[®] Y310-Lite Ash Rose Gloss
1 card—Frosty Rays[®] Y311-Ash Rose Gloss
1 card—Patent Leather PL1-Black

Alternate Color Scheme

1 card—Bravo![®] A122-Caravan
1 card—Pebbly Perle[®] P81-Dark Antique Blue
1 card—Frosty Rays[®] Y063-Medium Tan Gloss
1 card—Frosty Rays[®] Y088-Yellow Sparkle Gloss
1 card—Patent Leather PL1-Black

The Master Chart shows the complete design. Start from the center and complete each row before going on to the next. Turn canvas ¼ turn after each row. Refer to Master Chart for placement and diagrams for count.

NOTE: Frosty Rays and Patent Leather are used as they come off the card. Pebbly Perle and Bravo! are stripped and put back together before using.

- Row 1. Alternating Scotch Stitch in Pebbly Perle. Fill center with Patent Leather. Use two lengths, alternating vertical and horizontal stitches. See Diagram #1.
- Row 2. Cross Stitch using Frosty Rays (Y310), then Upright Cross Stitch in Frosty Rays (Y311).
- Row 3. Milanese Stitch in Bravo!. Start at corners and work to center. Note direction change.
- Row 4. Horizontal stitches and mitered corners are in Frosty Rays (Y310). Vertical stitches are Frosty Rays (Y311).
- Row 5. Reverse Scotch Stitch using Pebbly Perle first (see Master Chart), following with Bravo!.
- Row 6. Cross Stitch (over 4 threads): first layer—Frosty Rays (Y310); second layer—Frosty Rays (Y311).
- Row 7. Do 3 rows of Continental Stitch with Bravo!.
- Row 8. Lay Patent Leather between Rows 4 and 5. Couch down with Pebbly Perle.

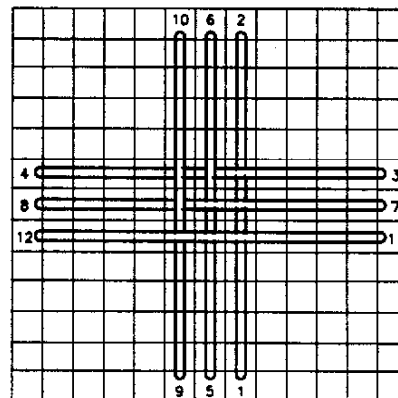


DIAGRAM #1

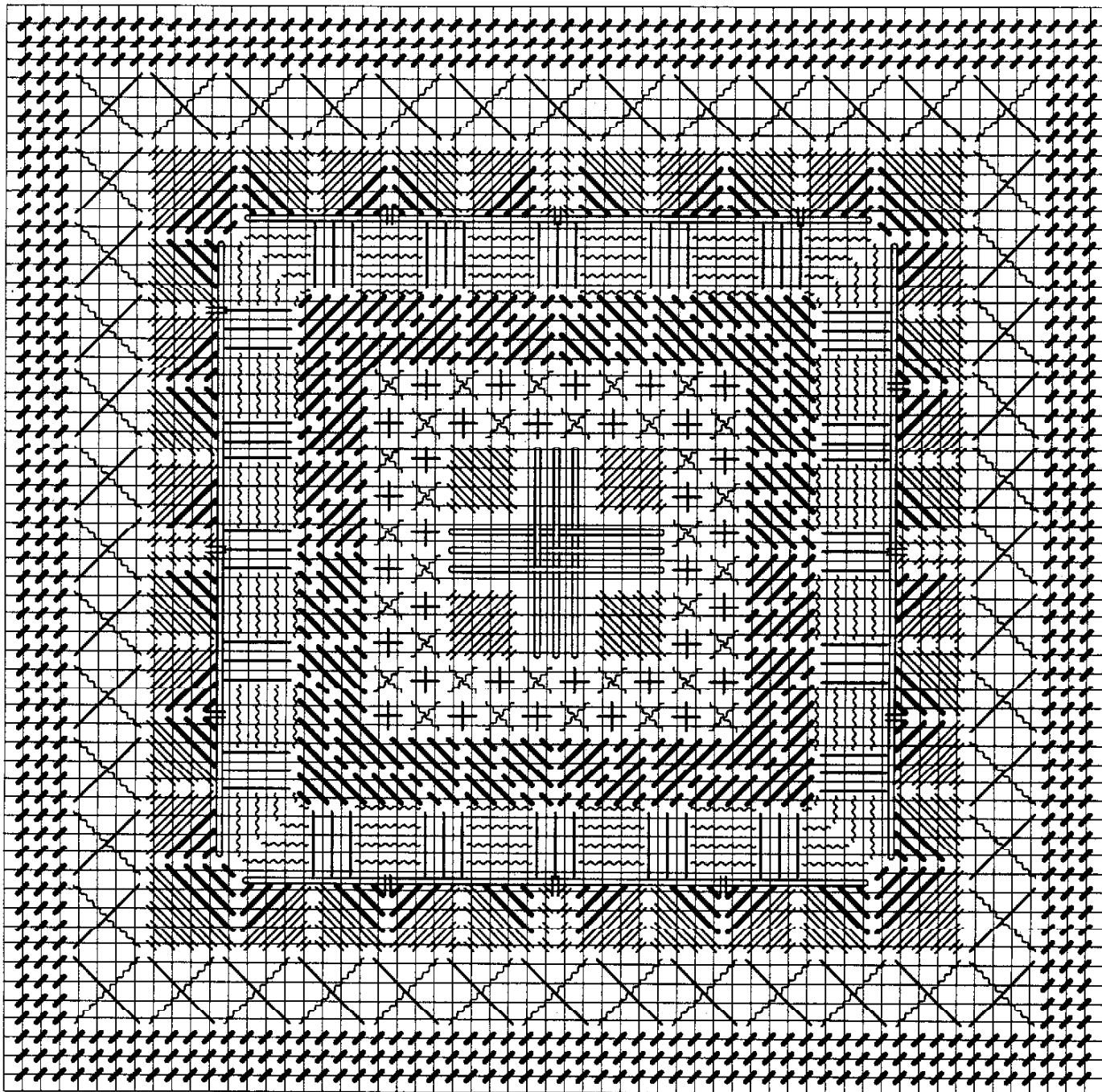
Photocopying of this design is invited.

Rainbow Gallery

7412 Fulton Ave., #5, North Hollywood, CA 91605

Production by Lightworks

LEATHER and LATTICE[®]—MASTER CHART



	P061
	PL1
	Y310
	A71
	Y311