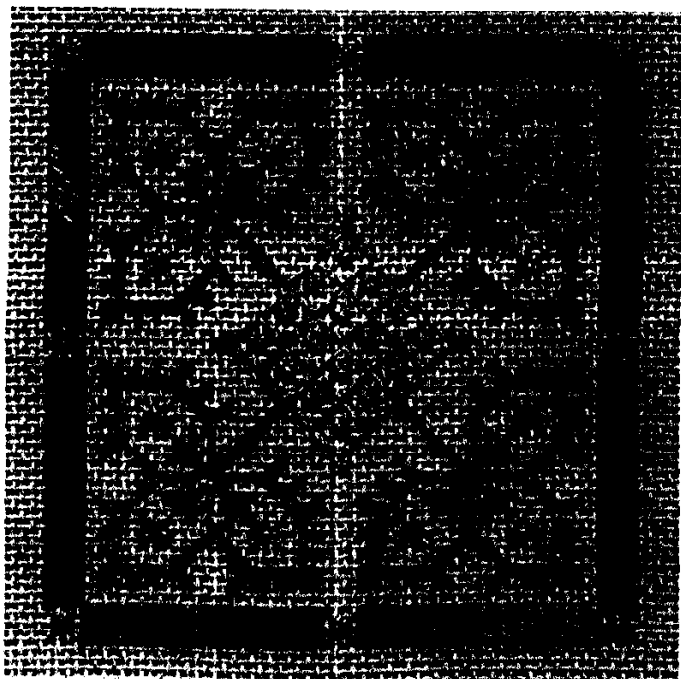


Lucky Charm

Designed for Rainbow Gallery by:

LAURAJO PERIN DESIGNS
2841 FRAYNE LANE CONCORD, CA 94518 925-676-8738



Symbol	Materials
	<u>Rainbow Gallery's</u> Overture, V98 - 7 Springs'
	Treasure Chest, TC11 - Morning Dew
	Nordic Gold, ND2 - Gold
	8' x 8' 18 ct. mono canvas, eggshell with gold (or plain eggshell canvas)
	#22 tapestry needle
Design size on 18 ct. mono canvas: 3 1/2' x 3 1/2'	



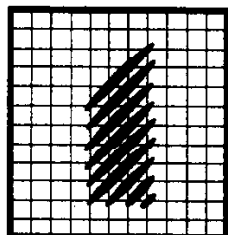
STITCHING INSTRUCTIONS:



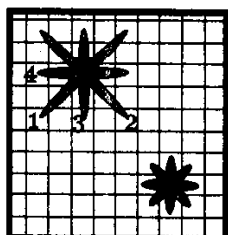
- Beginning at the center point, with one strand of Treasure Chest, backstitch grid of boxes.
- With one strand of Nordic Gold, stitch small Smyrnas inside each box.
- With one ply of varigated Overture, begin backstitching the clover blackwork patterns.
- When each clover leaf is done, work large Smyrna in each leaf with one strand of Nordic Gold.
- Diagonal Satin Stitch the outer border over four threads of canvas with one ply of the varigated Overture. Please note that each quadrant of the design border is stitched in a different direction.
- Stitch a large gold Smyrna Stitch in each corner and at the center of the border, using one strand Nordic Gold.

DESIGN IDEAS: This design can be quickly worked as an insert to a velvet pillow, or as the insert for a wooden box. It can also be turned 'on point' and sewn as an ornament with a gold tassel attached to the bottom.

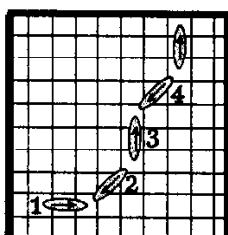
Lucky Charm



**Diagonal
Satin Stitch**

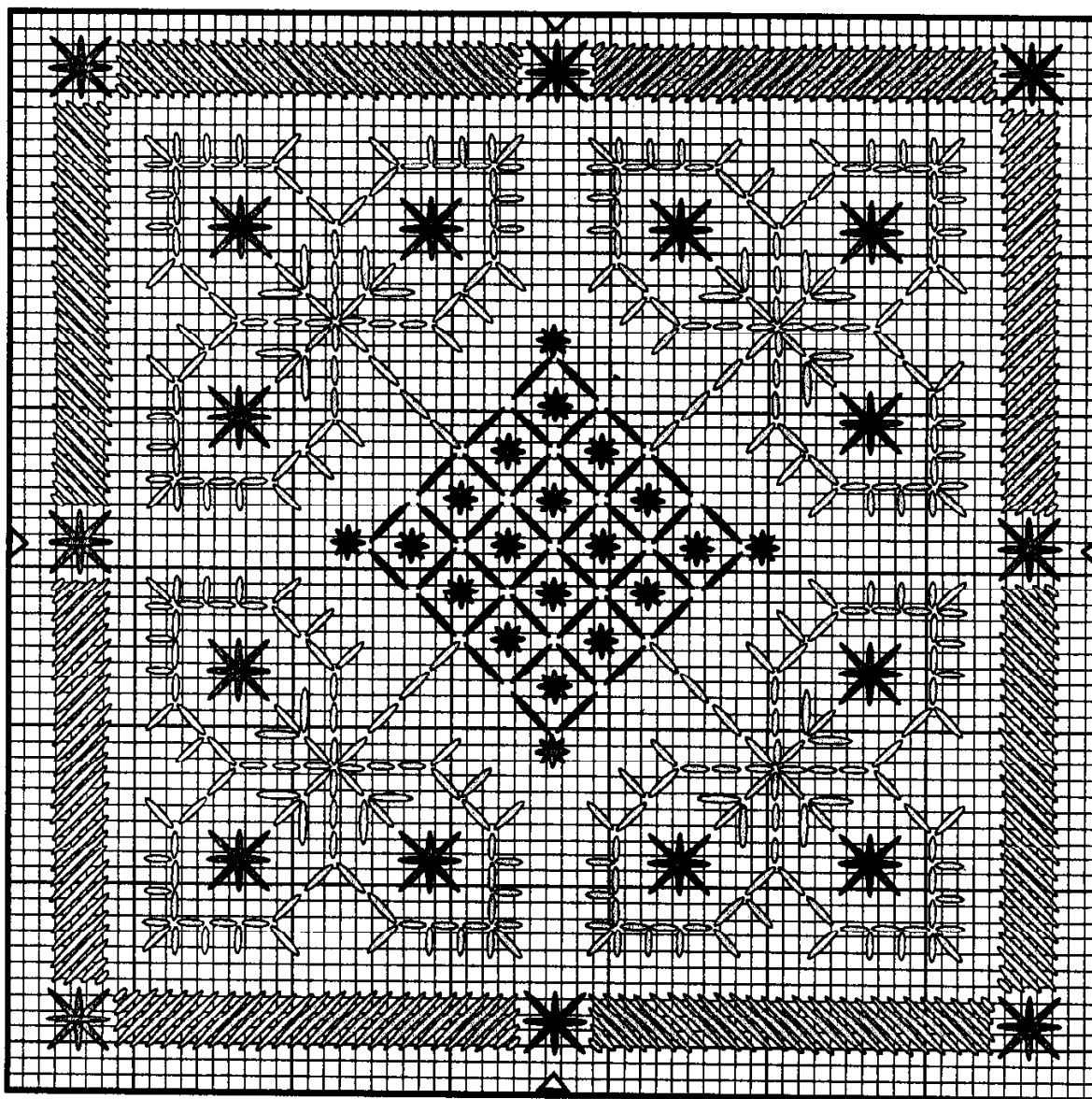


Smyrna Stitch



**Double Running
Backstitch**

Symbol	Materials
	Overture, V98 - 7 Springs
	Treasure Chest, TC11
	Nordic Gold, ND2 - Gold



*Be creative...
use various types
of threads...
and have fun!*

Copyright © 2002 Rainbow Gallery. Permission granted to make duplicate copies.