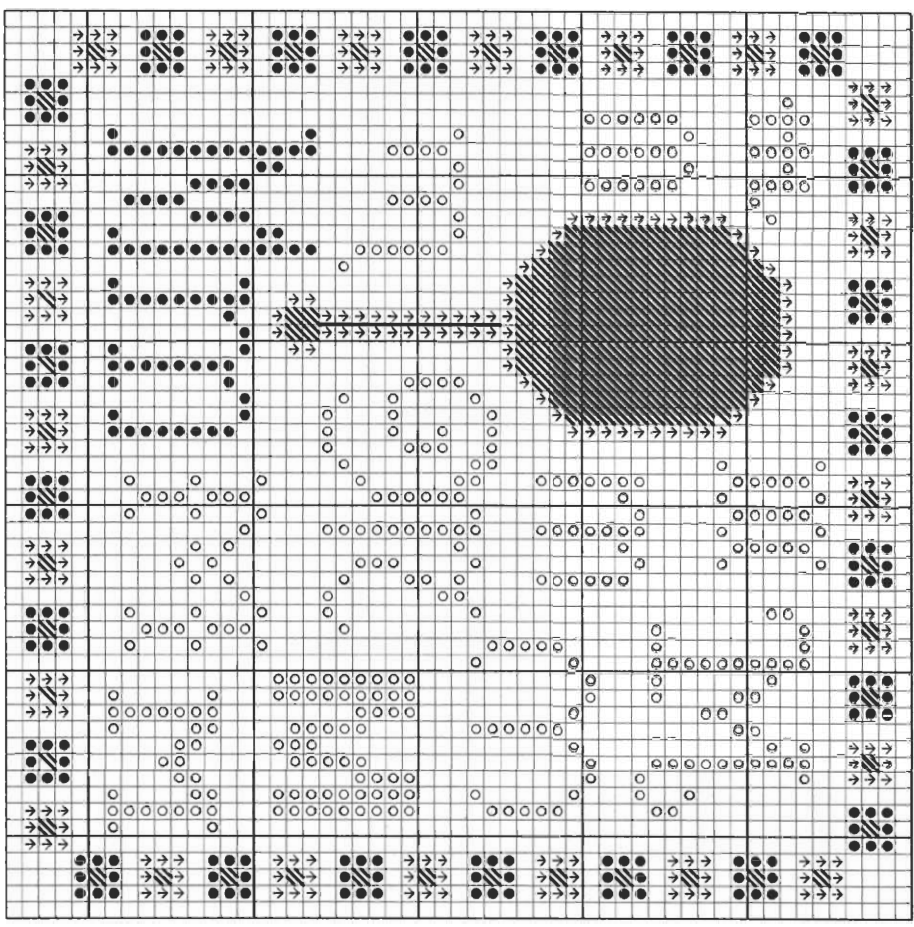


2007 CROSS STITCHER'S SURPRISE SERIES from



“M” is for Mirror & the Mosaic Stitch

Stitch count: 53h x 53w – approx. 4”h x 4”w stitched over 2 threads on 28ct Clay Cashel linen from Zweigart (#3281-715)

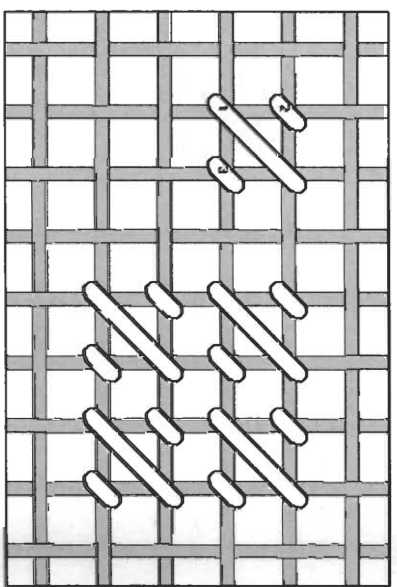


- Rainbow Gallery Fibers - 1 card each**
- ↘ M885 Mandarin Floss Dark Sage – 2 ply
 - S1036 Splendor® Plum – 2 ply
 - S1037 Splendor® Dark Plum – 2 ply
 - PB53 Petite Treasure Braid™ Midnite Green – 1 strand
 - PB54 Petite Treasure Braid™ Vatican Gold – 1 strand

After completing all cross stitches, make the Mosaic stitches per the diagram, using 1 strand of PB54 Vatican Gold to fill in the mirror. Use 1 strand of PB53 Midnite Green for additional Mosaic stitches filling in the bottom of the mirror handle and all of the small spaces in each of the border blocks. The backstitching in the mirror handle is also worked with 1 ply of PB53 Midnite Green.

Mosaic Stitch

This is basically a set of three small diagonal satin stitches covering 1 square on the chart. Individual sets are worked in the border blocks, and they are combined in a larger area to fill in the face of the mirror (the diagram also shows how they look when stitched in a group).



NOTE: Grid lines in stitch diagram represent one thread of your evenweave or linen fabric. Numbers are shown where your needle comes up from beneath the fabric.

See many more of our designs and learn more about our products at www.rainbowgallery.com

ERICA MICHAELS
NEEDLEART DESIGNS

See more designs at www.ericamichaels.com

Model framed by Lynne's Custom Framing, Clarksville TN
East Side Mouldings #OCON, www.eastidemouldings.com
Individual frame sizes: 5-3/4" square

Come back for next month's design, and collect the entire alphabet!

© 2007 RAINBOW GALLERY Permission to photocopy for free distribution.