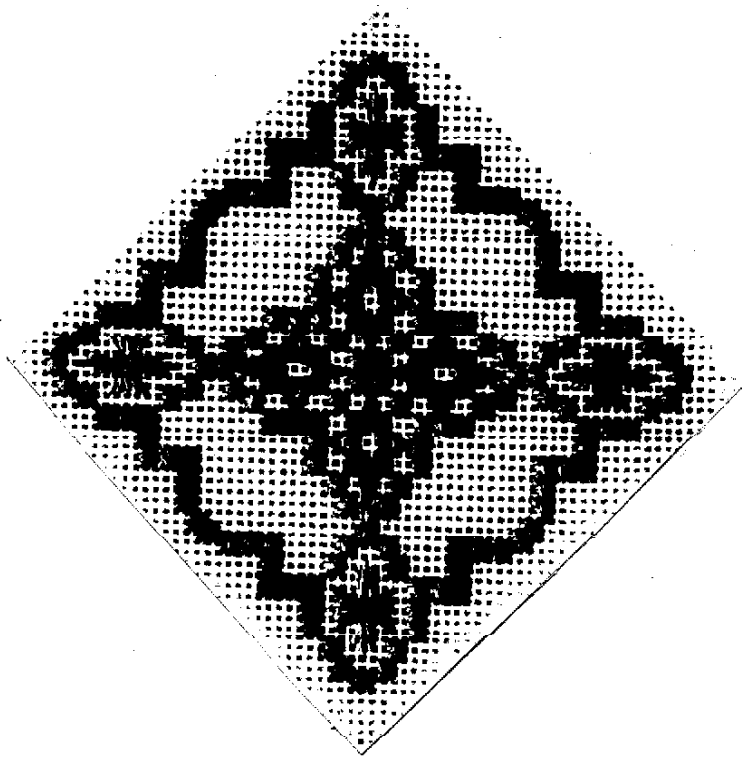


# MOROCCAN TILE <sup>©1995</sup>

A Sandi Ragan Design for Rainbow Gallery



## MATERIALS:

7" x 7"—#18 Mono Canvas (Finished size 4" x 4")  
Bars to fit

1 card each:

Encore! E46-Peacock  
Splendor® S874-Medium Violet  
Splendor® S855-Blue Blush

**Note:** Splendor has three bundles of plies. Pull out one bundle at a time and ply it.

1. Stitch Smyrna Cross outline with 1 strand Encore!. See Diagrams #1 and #1a.
2. Stitch Stars with 3 plies of Splendor S874. See Diagram #2.
3. Stitch Eyelets with 1 strand Encore!. See numbers on Diagram #3/4.
4. Stitch Elongated Crosses with 3 plies of Splendor S874. See letters on Diagram #3/4.
5. Stitch background in Four-way Continental with 1 ply of Splendor S855. See Diagram #5.



Diagram #1

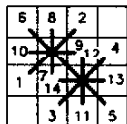


Diagram #1a

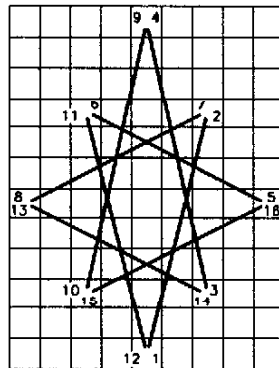


Diagram #2

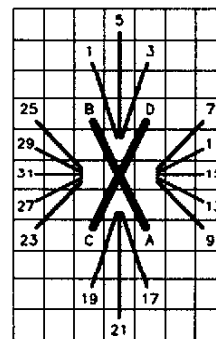


Diagram #3/4

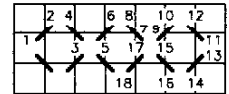


Diagram #5

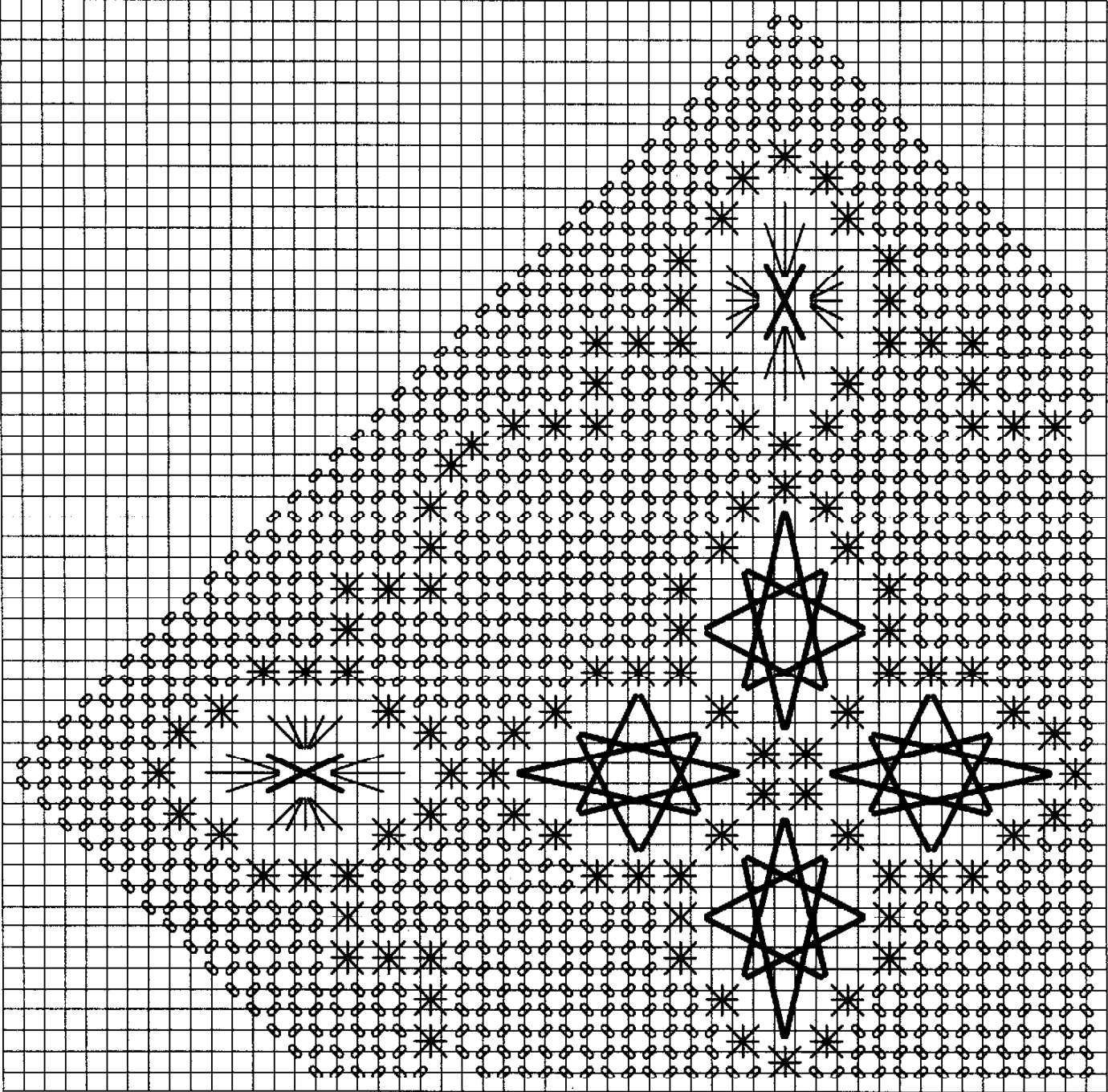
Permission granted for shop owners and guilds to copy.

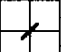

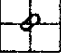
*Rainbow Gallery*

7412 Fulton Ave., #5, North Hollywood, CA 91605

Production by Lightworks

# MOROCCAN TILE®—UPPER LEFT QUADRANT



-  Encore! (E46)
-  Splendor (S874)
-  Splendor (S855)