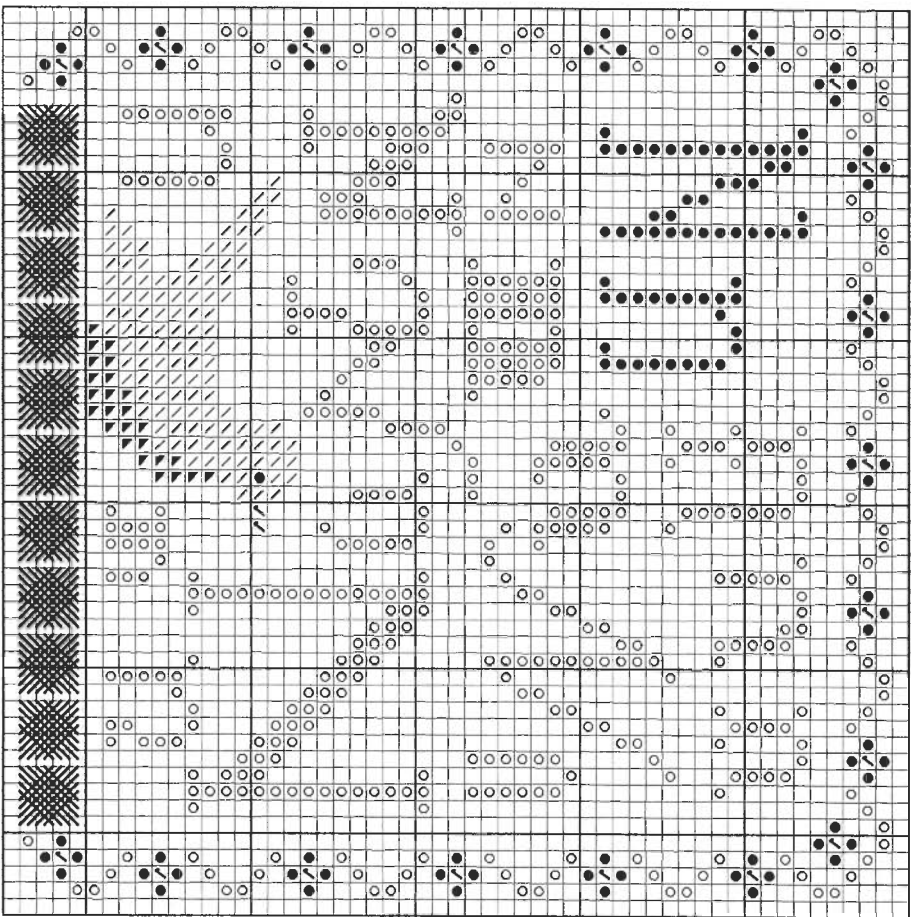


2007 CROSS STITCHER'S SURPRISE SERIES from



“N” is for Nightingale & the Norwich Stitch

Stitch count: 53h x 53w – approx. 4” x 4”w stitched over 2 threads on 28ct Clay Cashel linen from Zweigart (#3281-715)



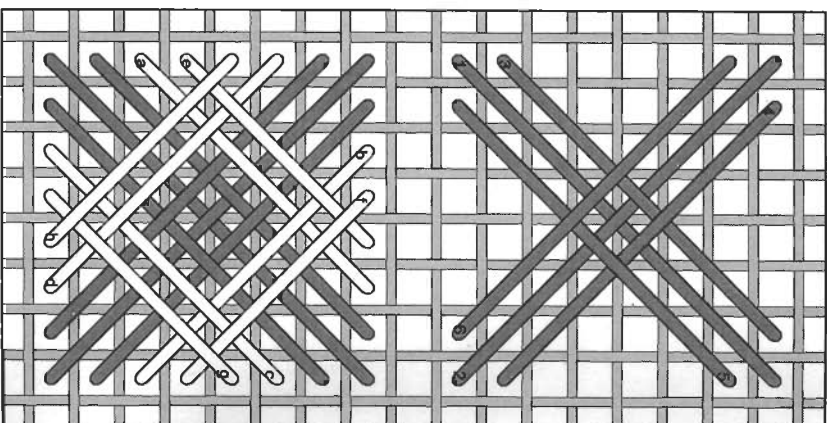
- Rainbow Gallery Fibers - 1 card each**
- ✓ M821 Mandarin Floss Dark Beige – 2 ply
 - M868 Mandarin Floss Periwinkle – 2 ply
 - ▲ M880 Mandarin Floss Dark Fawn – 2 ply
 - ✓ S923 Splendor® Medium Dark Flesh – 2 ply
 - S1063 Splendor® Fern Green – 2 ply

After completing all cross stitches, make the Norwich stitches across the bottom of the design using 1 ply of S1063 Fern Green for the first set of stitches, and 1 ply of M868 Periwinkle for the top stitches. Count carefully for the Norwich stitch is worked over an uneven number of threads (seven) and there is one thread between each Norwich stitch.

Norwich Stitch

This stitch is a series of long crosses which interweave to form a diamond pattern – it can be worked in 1 or 2 colors. For this design work the first set of stitches using the dark gray lines for reference. Switch colors and complete the stitch using the white lines in the diagram.

NOTE: Grid lines in stitch diagram represent one thread of your evenweave or linen fabric. Numbers are shown where your needle comes up from beneath the fabric.



See many more of our designs and learn more about our products at www.rainbowgallery.com



See more designs at www.ericamichaels.com

Model framed by Lynne's Custom Framing, Clarksville TN
 East Side Mouldings #OCON, www.eastsidemouldings.com
 Individual frame sizes: 5-3/4" square

Come back for next month's design, and collect the entire alphabet!

© 2007 RAINBOW GALLERY Permission to photocopy for free distribution.