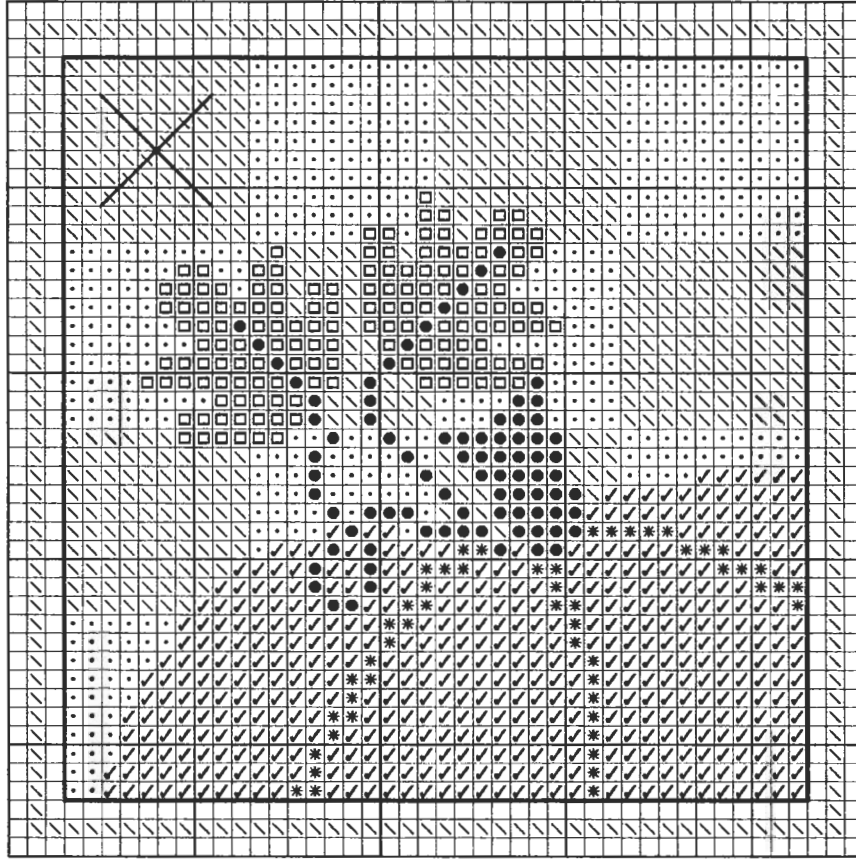


# NOVEMBER - HARVEST PUMPKIN

Stitch count: 44h x 44w – approx. 3”h x 3”w ♥ 28ct Cappuccino Country French linen from Wichelt (#86-265) stitched over two.  
or 14ct Cappuccino Country French Soft Touch Aida (#367-265)



### Rainbow Gallery Fibers - 1 card each

- ✓ M815 Mandarin Floss Rust – 2 ply
- \* ND15 Nordic Gold™ Bronze – 1 strand
- P76 Pebbly Perle® Dark Olive – 1 ply
- RT26 Rainbow Tweed Sea Green – 1 ply
- S1038 Splendor® Med Camel – 2 ply
- ∖ S1050 Splendor® Dark Brass – 2 ply

After completing all cross stitches, back stitch with 1 ply Dark Olive Pebbly Perle® around the edge of the main design area as indicated by the solid line on the chart. We attached the cornucopia charm in the upper left corner with some Dark Brass Splendor®. (charm #60017AG from By Jupiter!)

Go to [www.ericamichaels.com](http://www.ericamichaels.com) for  
**ERICA MICHAELS**  
DESIGNS FOR COUNTED CROSS STITCH  
 more designs by Linda Stolz

See many more of our designs and learn more about our products at  
[www.rainbowgallery.com](http://www.rainbowgallery.com)

Model framed by *Homespun Corner, Clarksville TN* with *Wood 'N Needle Crafts #FF RU LL (Raw Umber)*

**Come back for next month's design!**