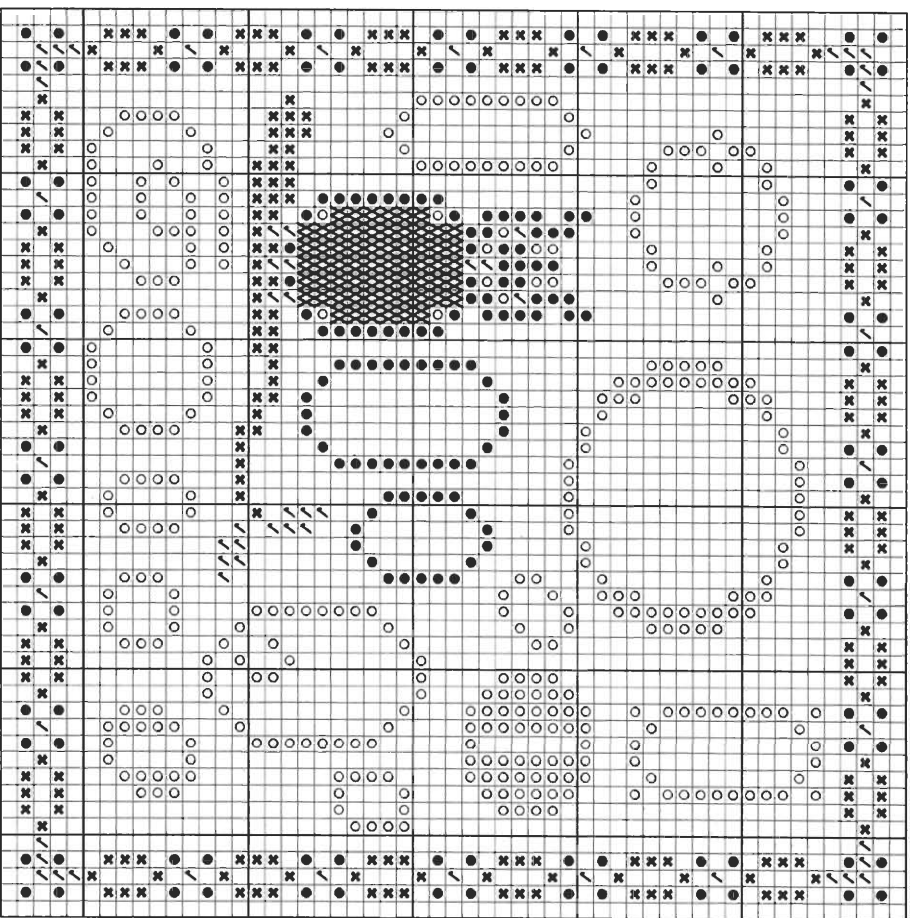


“O” is for Owl & the Oblong Rice Stitch

Stitch count: 53h x 53w – approx. 4”h x 4”w stitched over 2 threads on 28ct Clay Cashel linen from Zweigart (#3281-715)



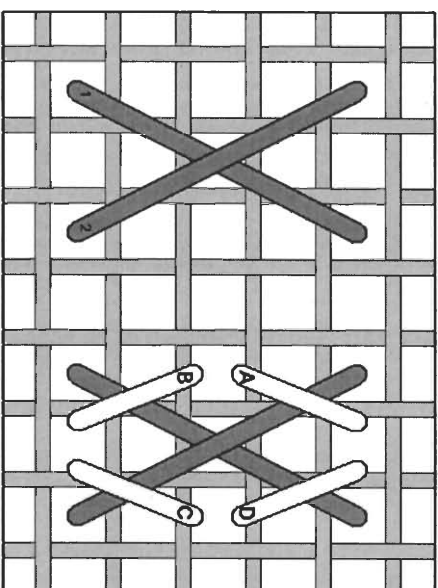
- Rainbow Gallery Fibers - 1 card each**
- ✱ M818 Mandarin Floss Olive – 2 ply
 - M872 Mandarin Floss Dark Ecru – 2 ply
 - S904 Splendor® Dark Golden Brown – 2 ply
 - S1039 Splendor® Dark Camel – 2 ply
 - ✓ PB55 Petite Treasure Braid™ Brass – 1 strand

After completing all cross stitches, make the oblong rice stitches for the owl's breast. Use 2 ply of S904 Dark Golden Brown for the oblong cross stitch which is the base of the stitch. Then use 1 ply of M872 Dark Ecru for the top stitches to create the texture. (If stitching on 32ct fabric, use just 1 ply of S904 for the base oblong stitch.)

Oblong Rice Stitch

This stitch starts with a tall or oblong cross stitch as shown by the dark gray lines. The second set of stitches is made by stitching over each "leg" of the base stitch – shown in the diagram by the white lines.

(This stitch can be worked in one or two colors.)



NOTE: Grid lines in stitch diagram represent one thread of your evenweave or linen fabric. Numbers and letters are shown where your needle comes up from beneath the fabric.

See many more of our designs and learn more about our products at www.rainbowgallery.com

Model framed by Lynne's Custom Framing, Clarksville TN
 East Side Mouldings #OCON, www.eastidemouldings.com
 Individual frame sizes: 5-3/4" square

ERICA MICHAELS
 NEEDLEART DESIGNS

See more designs at www.ericamichaels.com