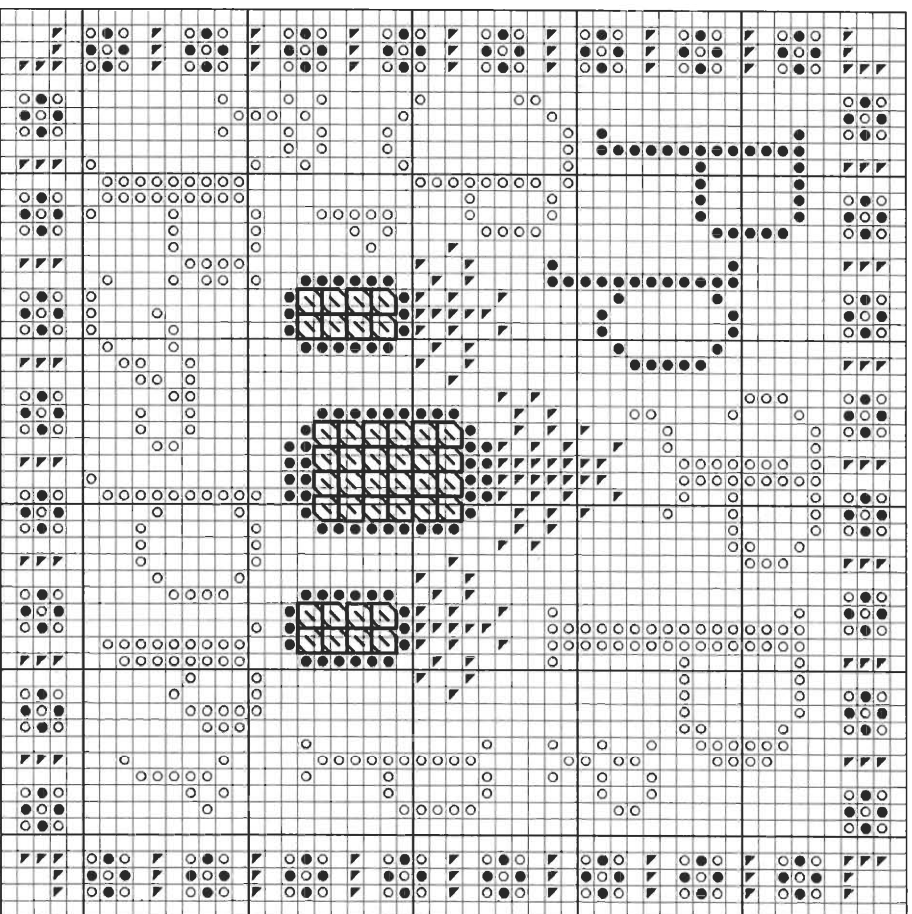


“P” is for Pineapple & the Periwinkle Stitch

Stitch count: 53h x 53w – approx. 4”h x 4”w stitched over 2 threads on 28ct Clay Cashel linen from Zweigart (#3281-715)



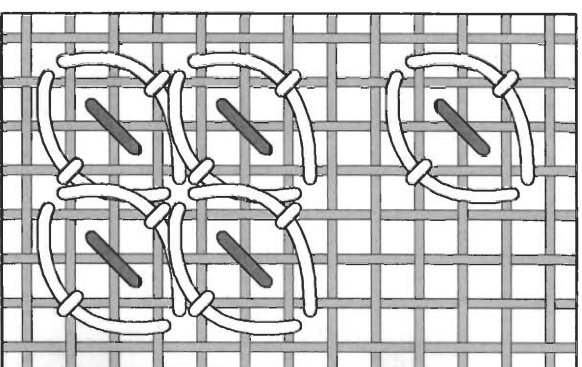
- Rainbow Gallery Fibers - 1 card each**
- ▶ M836 Mandarin Floss Pistachio – 2 ply
 - S1012 Splendor® Old Gold – 2 ply
 - S1011 Splendor® Medium Old Gold – 2 ply

After completing all cross stitches, make the periwinkle stitches for the interior portion of the pineapples using 2 ply of S1012 Old Gold for the outside of the stitch & the small tacking stitches. Use S1011 Medium Old Gold for the small interior stitch. This really does add a “pineapple” texture to the design!

Periwinkle Stitch

Count carefully as this stitch is worked over 3 threads high and 3 threads wide. Make your first stitch as shown by the white line in the diagram – a slightly loose diagonal stitch from lower left to upper right. Anchor it with a short ½ stitch in the upper left corner of the grid. Repeat and anchor the second stitch in the lower right corner. Lastly, make a small ½ stitch in the center of the circle created by the first stitches. (The diagram shows a single stitch and also a cluster to illustrate how neighboring stitches share holes.)

NOTE: Grid lines in stitch diagram represent one thread of your evenweave or linen fabric.



ERICA MICHAELS
NEEDLEART DESIGNS

See more designs at www.ericamichaels.com

See many more of our designs and learn more about our products at www.rainbowgallery.com

Model framed by Lynne's Custom Framing, Clarksville TN
East Side Mouldings #OCON, www.eastsidemouldings.com
Individual frame sizes: 5-3/4" square