

# Madeline

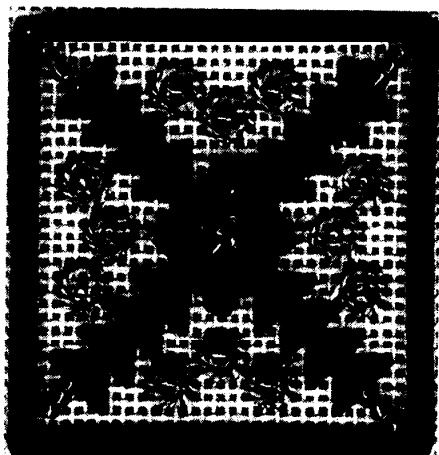
## A Pam Miller Design for Rainbow Gallery

### MATERIALS

6" x 6"—#18 mono canvas (White); Stretcher bars to fit; #22 & #24 Tapestry needles; Beading Needle; 2 pkgs—Mill Hill Treasures #13071; 1 pkg—Mill Hill Beads #02011

1 card each of the following:

Hi-Lights H602-Gold; Very Velvet™ V231-Christmas Red; Very Velvet™ V238-Dark Sea Green



1. Find center. Work Scotch Variation flower in V231. See Diagram #1.
2. Stitch Milanese in V238. See Diagram #2.
3. Jessicas are done in Hi-Lights H602. See Diagram #3.
4. Border is V231 and V238. Add beads and treasures (courtesy of Gay Bowles Sales) as shown on Master Chart.

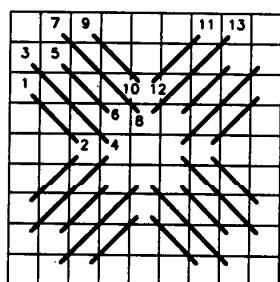
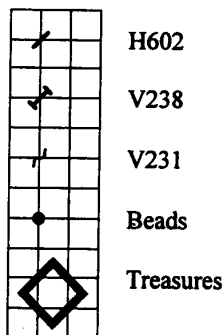


DIAGRAM #1

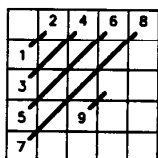


DIAGRAM #2

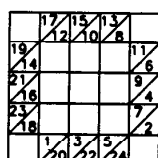
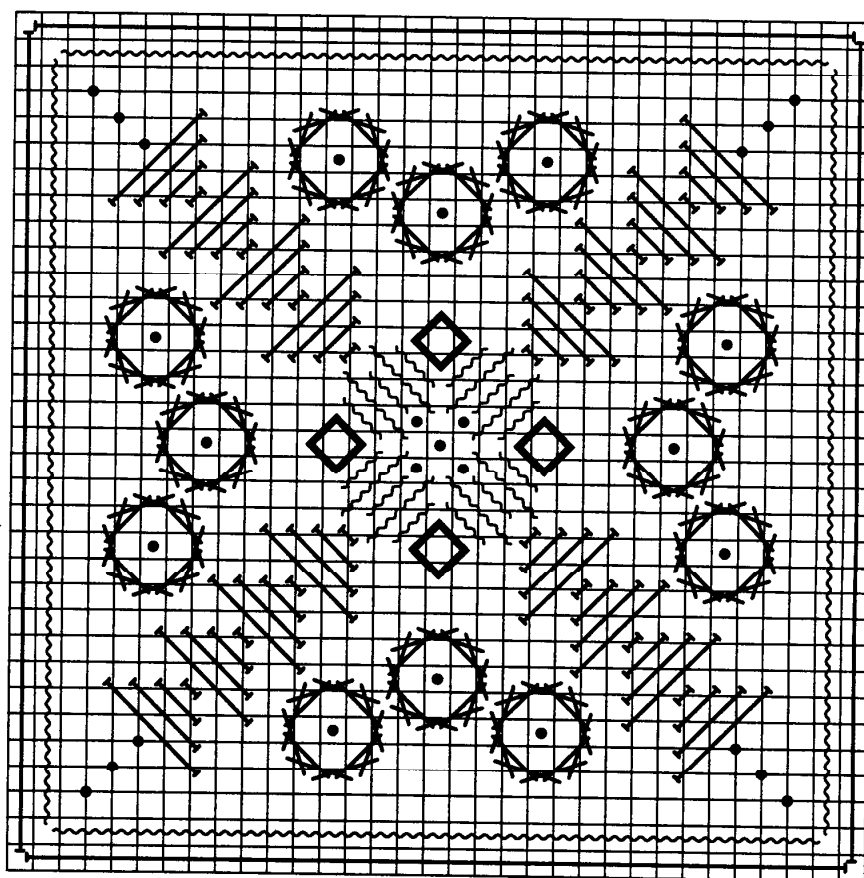


DIAGRAM #3



See many more of our designs and learn about our products at [www.rainbowgallery.com](http://www.rainbowgallery.com).