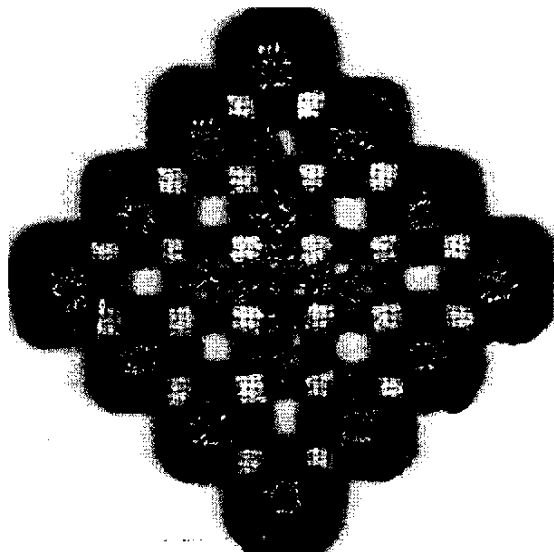


PRESERVES HARDANGER ORNAMENT ^{©1997}

A Ruth Dilts Design for Rainbow Gallery



MATERIALS:

- 6" x 6"—#22 Hardanger fabric (white)
- 1 card—Encore! E64-Preserves
- 1 card—Pebbly Perle® P62-Dark Amethyst
- 1 card—Nordic Gold® ND2-Gold

Choose your favorite colors in these threads for alternate color ways.

For additional information regarding Hardanger stitching techniques, see "Beginners Charted Hardanger Embroidery" by Meier/Watnemo, ©1980.

1. Do all Kloster Blocks using a full repeat of 1 ply Encore.
2. Do Buttonhole Stitch using a full repeat of 1 ply Encore. See Diagram #1.
3. Do Eyelets with Nordic Gold, pulling fairly hard so center will open. See Diagram #2. All even numbers go down in the center.
4. Cut areas as shown on Master Chart and remove threads.
5. Do the Woven Bars around the Kloster Blocks using 1 ply Pebbly Perle. See Diagram #3. Follow color legend with Master Chart.
6. Do the center Woven Bars and Dove's Eyes with Nordic Gold. See Diagram #4. If you weave bars by going down into bar, then you go down into Dove's Eye. If you weave bars going up, then you go up into Dove's Eye.
7. Cut out around Buttonhole Stitch. Attach a hanger of Nordic Gold.

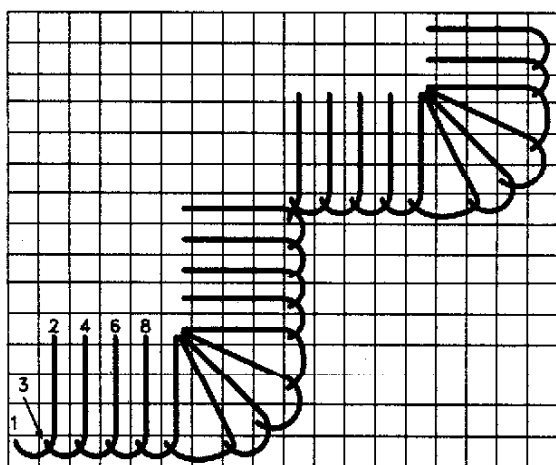


DIAGRAM #1—Buttonhole Stitch

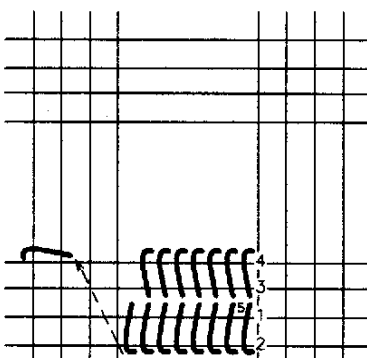


DIAGRAM #3—Woven Bars

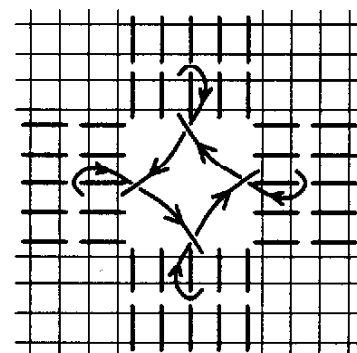


DIAGRAM #4—Dove's Eye

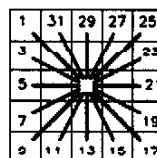


DIAGRAM #2
Eyelet

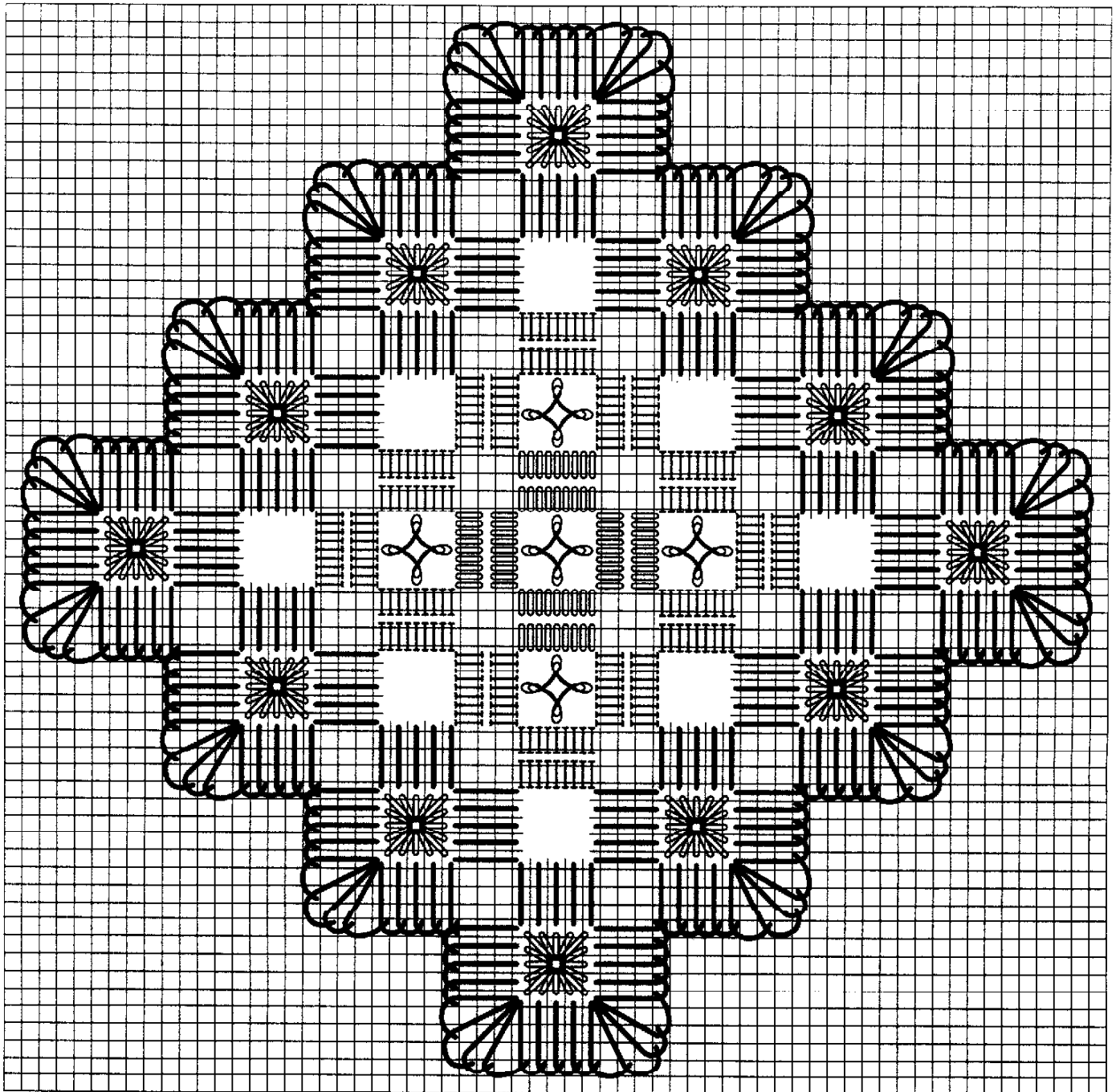
Photocopying of this design is invited.

Rainbow Gallery

7412 Fulton Ave., #5, North Hollywood, CA 91605

Production by Lightworks

PRESERVES HARDANGER ORNAMENT ©1997



	Encore!
	Pebbly Perle
	Nordic Gold