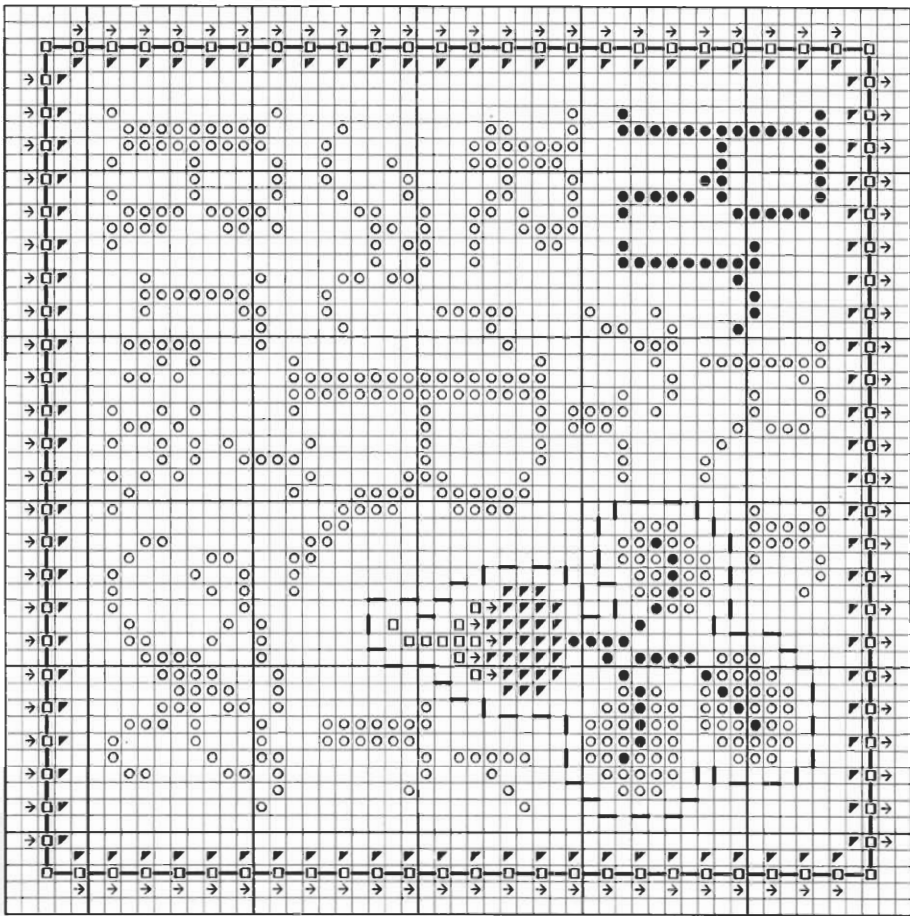


# “R” is for Radish & the Running Stitch

Stitch count: 53h x 53w – approx. 4”h x 4”w stitched over 2 threads on 28ct Clay Cashel linen from Zweigart (#3281-715)



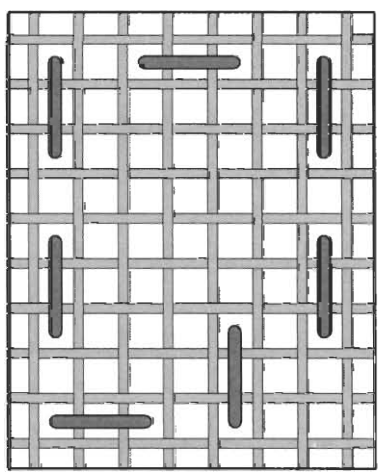
- Rainbow Gallery Fibers - 1 card each**
- E836 Elegance™ Dark Forest Green – 1 strand (or 2 ply S836)
  - M802 Mandarin Floss White – 2 ply
  - ↑ M806 Mandarin Floss Dark Dusty Rose – 2 ply
  - ▲ M810 Mandarin Floss Cranberry – 2 ply
  - S958 Splendor® Pistachio – 2 ply

After completing all cross stitches, use 1 ply of M810 Cranberry to make running stitches around the radish. In the border use 1 ply of S958 Pistachio for those running stitches so your thread shows between the white cross stitches.

**Running Stitch**

This is probably the most basic stitch! Just over and under every 2 threads to create the outline. You may work the running stitches from right to left or left to right.

**NOTE:** Grid lines in stitch diagram represent one thread of your evenweave or linen fabric.



**ERICA MICHAELS**  
NEEDLEART DESIGNS

See more designs at [www.ericamichaels.com](http://www.ericamichaels.com)

See many more of our designs and learn more about our products at [www.rainbowgallery.com](http://www.rainbowgallery.com)

Model framed by Lynne's Custom Framing, Clarksville TN  
East Side Mouldings #OCON, [www.eastsidemouldings.com](http://www.eastsidemouldings.com)  
Individual frame sizes: 5-3/4" square

Come back for next month's design, and collect the entire alphabet!

© 2007 RAINBOW GALLERY Permission to photocopy for free distribution.